

# One Provider for Your Enterprise Mobility Deployment, Start to Finish

## Leading Enterprise Mobility Solution

Barcodes, Inc. supports your operation with cutting-edge enterprise mobile solutions designed to help you keep employees connected, improve productivity, enhance efficiency, and operate cost-effectively. Our team has the resources and expertise to help you select solutions that meet your needs and provide your business with maximum value.

### AIDC Hardware

Once we work with you to identify your needs for barcode readers, barcode printers, handheld computers, RFID readers, and other automatic identification and data collection (AIDC) hardware, we'll design the optimal end-to-end solution for your operation using industry-leading products like Zebra Technologies.



Zebra MC9308



Zebra TC72



Zebra PS20



Zebra LI2208



Zebra WS50



Zebra ZQ521

### Implementation

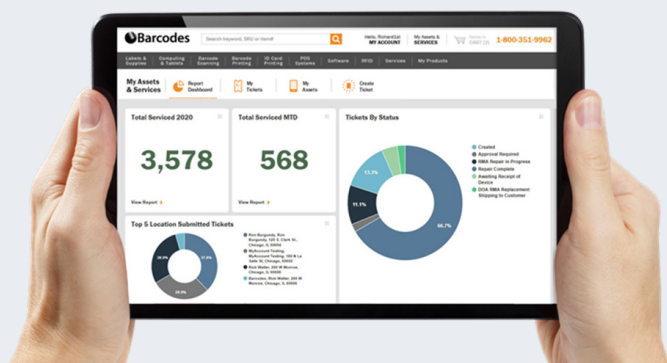
Outsource implementation to the experienced team at Barcodes, Inc. Our experienced TrueSupport project managers will ensure smooth staging, kitting, and provisioning and onsite installation services. As a global provider, Barcodes, Inc. has an extensive network that will bring projects in on time, and on budget, regardless of the size of the deployment.

### Mobile Device Management

Barcodes, Inc. does more than deploy enterprise mobility solutions: we'll manage them to ensure optimal uptime for your mobile workforce. For enterprise mobility reliability and performance, we'll provide you with a mobile device management (MDM) solution that best fits your scale and operations from leading providers like SOTI and 42Gears. MDM ensures you can update, secure, and manage your entire fleet from a single screen, saving time, applying changes consistently, and maximizing device uptime. MDM also provides you with device health information so you can schedule maintenance before a device fails. Our TrueSupport team can even administer MDM for your enterprise.

### Service and Support

When devices require maintenance or repairs, you can take advantage of our spare pool and depot service so your employees always have the tools they need to do their jobs. Barcodes, Inc. also offers help desk and managed services, including device-as-a-service that shifts enterprise mobility device deployments from a CAPEX to an OPEX supported by software and services.



## Total Visibility into Your Enterprise Mobility Deployment

The TrueView asset management portal provides you with on-demand visibility into all assets provided or managed by Barcodes, Inc. You can immediately access information on the assets in your deployment, service contracts, expiration dates, and repair tracking.

## Benefits of Working with Barcodes, Inc.



Industry-leading technology



Consult with solution design experts



High end-user solution adoption



Time and cost-saving strategies



Maximum device uptime



Tighter control of "technology debt"

## Rely on Barcodes for Your Enterprise Mobility Deployment

### New Deployments

Warehouse, distribution centers, and manufacturers migrating from paper-based processes to AIDC can count on Barcodes, Inc. to guide them through the transition to a more efficient way to operate. Our team will also work with you on your timeline and provide financing for greater budget flexibility.

### Hardware Upgrades

Barcodes, Inc., works with you to get the most value from your IT investments – even when it's time to upgrade. The Go Mobile Trade-In Program enables you to earn rebates for outdated devices with eligible purchases. Additionally, Barcodes, Inc. buys back some device models to refurbish for its certified pre-owned products.

### How to Buy

*If you're ready to give your business the benefits of working with Barcodes, Inc., contact [sales@barcodesinc.com](mailto:sales@barcodesinc.com) today for your enterprise mobility deployment.*

## Contact Us To Get Started

