

# 32" (31.5" viewable) All-in-One Digital ePoster

Dynamic Advertising Made Easy

**ViewSonic®**  
See the difference® 

**EP3203r**



Impactful in-store digital signage is easy with ViewSonic's new EP3203r—an all-in-one 32" digital ePoster. The EP3203r can be easily configured for vivid retail messaging via its internal media player, or via connection to your favorite external media player. In addition, multimedia JPEG, music, or video content can be uploaded to the EP3203r using a USB thumb drive, or over a network. With a 200x400 mounting pattern on the back panel, the flexible EP3203r can be mounted in portrait or landscape orientation, and features a full edge-to-edge tempered glass faceplate. This display is ideal in high-visibility locations such as retail settings, banks and universities.

## **32" (31.5" viewable) HD 1366x768 Display Resolution**

The EP3203r has everything you expect from a ViewSonic display—delivering stunning clarity and color performance with full HD resolution.

## **LED Backlight with 4000:1 Contrast Ratio**

LED backlighting enhances display performance and delivers an outstanding color range, while a brilliant 4000:1 contrast ratio provides for remarkably detailed images.

## **Internal Media Player Supports Multimedia Content**

With all-in-one functionality, the EP3203r has a built-in media player—making the sharing of vivid retail messaging a breeze.

## **Simple Content Loading**

Multimedia JPEG, music, or video content can be quickly and easily uploaded using a USB thumb drive, or over a (LAN) network, or by adding an external media player, for extreme versatility.

## **Connect to an External Media Player or PC**

Easily add a third party media player or PC with the integrated HDMI and VGA inputs.

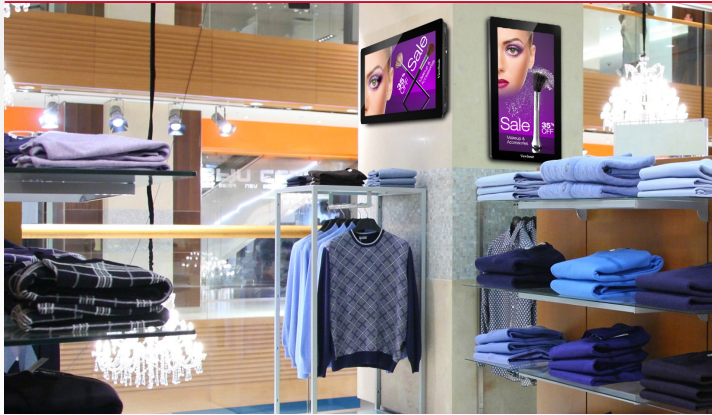
## **Integrated Speakers**

A pair of 5-watt integrated speakers is ideal for multimedia applications, videos, and audio-enabled display messaging.

## **Portrait or Landscape Mountable**

The EP3203r ePoster is VESA® wall mountable (200mm x 400mm) in either portrait or landscape orientation for display flexibility in a variety of settings.

# 32" (31.5" viewable) All-in-One Digital ePoster



**EP3203r**

## ePoster Manager Express

Content scheduling and management software (MS Windows compatible) is included for increased control of your corporate branding and targeted messaging.

## Applications

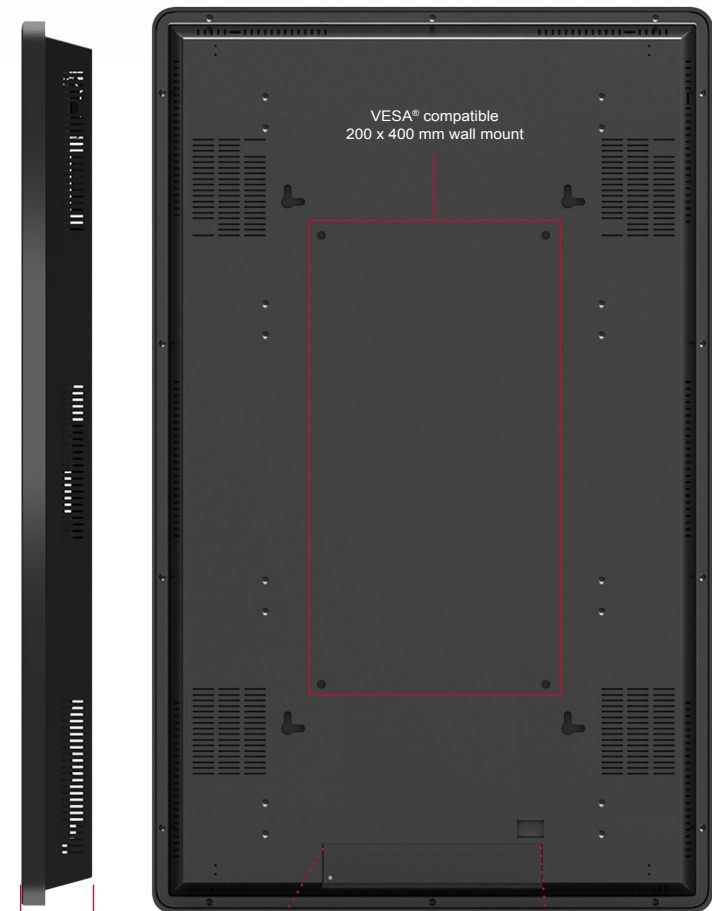
- Retail advertising in high visibility locations
- Informational signs for hotel lobbies and public locations
- Advertising boards for banks and university campuses

## Specifications

<b>LCD PANEL</b>	Type	32" (31.5" viewable) color TFT active matrix LCD w/ WLED backlight
	Display Area	27.5" horizontal x 15.4" vertical; 31.5" diagonal
	Optimum Resolution	1366x768, 600mm dot pitch
	Contrast Ratio	4000:1 (typ)
	Viewing Angles	178° horizontal, 178° vertical
	Response Time	8ms
	Backlight	White-light LED
	Backlight Life	50,000 hrs. (typ)
	Brightness	320 cd/m <sup>2</sup> (typ)
	Aspect Ratio	16:9
<b>INPUT SIGNAL</b>	Panel Surface	Anti-glare, hard coating (3H)
	TV/Video Comp.	480i, 480p, 720p, 1080i, 1080p
	<b>CONNECTOR</b>	Analog
		Digital
		LAN
		Audio In
<b>AUDIO OUTPUT</b>	Speakers	Internal 5-watt (x2)
	Voltage	AC 100–240V (universal), 50–60Hz
	Consumption	100W (typ)
<b>CONTROLS (OSD)</b>	System Settings	Language, Clock Display, Scrolling Text, USB Port, Return to Factory Settings
	Playback Control	Storage Priority, Playback Mode, Play Time
	Date & Time	Year, Month, Day, Hour, Minute, Update Date & Time
	On / Off Timer	Timer Mode, Daily, Sunday–Saturday
	Local ID	ID, Save
	Screen Mode	Vertical, Horizontal, Save and Reboot
	File Management	Information, Format
	Source	HDMI, VGA, Internal Storage
	Image	Brightness, Contrast, Saturation, Color Temp.
	PC Setting	Auto Adjust, H Position, V Position, Phase, Clock
<b>OPERATING CONDITIONS</b>	Temperature (landscape)	32–122°F (0–50°C)
	Humidity	20–90% (non-condensing)
<b>DIMENSIONS (W x H x D)</b>	Physical	31.9 x 19.7 x 1.6 in. / 810.3 x 500.4 x 40.6 mm
	Packaging	37.8 x 24.4 x 5.5 in. / 960 x 620 x 140 mm
<b>WEIGHT</b>	Net	33.1 lb. / 15.0 kg
	Gross	39.7 lb. / 18.0 kg
<b>WALL MOUNT</b>	VESA®	200mm x 400mm
<b>REGULATIONS</b>		FCC, RoHS Green BOM List & RoHS DoC
<b>RECYCLE/DISPOSAL</b>		Please dispose of in accordance with local, state or federal laws.
<b>WARRANTY</b>		One-year limited warranty

## What's in the box?

EP3203r ePoster, power cable, remote control with batteries, Quick Start Guide, ViewSonic Wizard CD (with User Guide)



Slim design  
only 1.6" thick!



Specifications and availability are subject to change without notice. Selection, offers and programs may vary by country; see your ViewSonic representative for complete details. Corporate names, trademarks stated herein are the property of their respective companies. Copyright © 2014 ViewSonic Corporation. All rights reserved. [17353-00B-08/14]

