

- For indoor and outdoor installation
- Made of aluminium, painted with epoxy powder

WFWBTA

Column bracket suitable for PTH900, PTH300 and PTH355P Pan & Tilt motors, made of aluminium and furnace painted with epoxypolyester powder RAL9002. It can be used with PTBC, WFWCA and PTAC brackets.

PTAC

Wall mount for PTH300 and PTH355P Pan & Tilt motors, made of aluminium, painted with epoxypolyester powder RAL9002. It is suitable for all adaptors for mounting on any kind of surface.

PTBC

Wall bracket for PTH900 Pan & Tilt motor. Made of die-cast aluminium and painted with epoxypolyester powder RAL9002, it can be perfectly combined with PTCC pole adaptor.

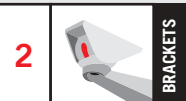
PTPC

Top of pole adaptor plate for PTH900, PTH300 and PTH355P Pan & Tilt motors. Made of 3 mm-thick sheet steel and painted with epoxypolyester powder RAL9002, it ensures a firm fixing of the Pan & Tilt motor.

PTDC

Ceiling bracket for PTH900, PTH300 and PTH355P Pan & Tilt motors. Made of steel painted with epoxypolyester powder RAL9002, it ensures a firm fixing of the Pan & Tilt motor.

MODELS	
PTBC	Wall mount for P&T's
PTAC	Wall mount for P&T's
PTDC	Ceiling mount for P&T's
PTPC	Top pole mount for P&T's
WFWBTA	Parapet mount for P&T's

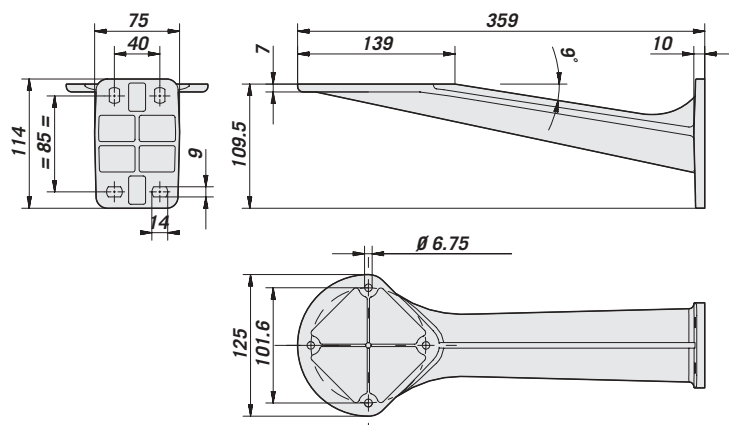




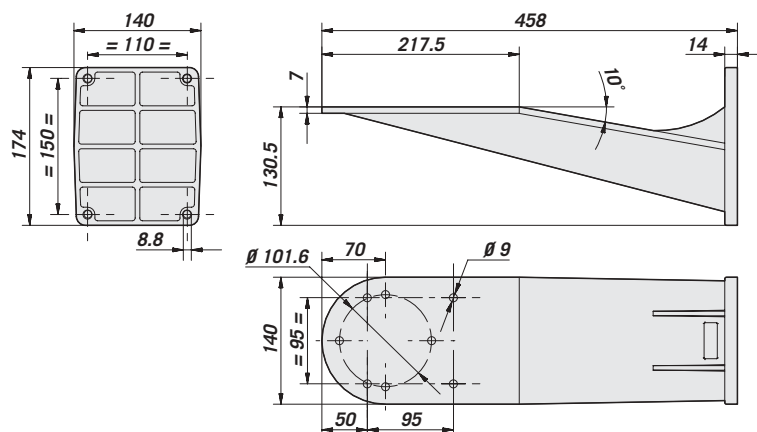
BRACKETS AND P&T CHART

	WALL		CEILING	COLUMN	TOP POLE
	PTBC	PTAC	PTDC	FWBT	PTPC
P&T:					
PTH900	•		•	•	•
PTH300	•	•	•	•	•
PTH355P	•	•	•	•	•
ADAPTERS:					
WSFP		•			
WCW		•			
WCP		•			
PTCC	•				
WCWGC	•				

PTAC

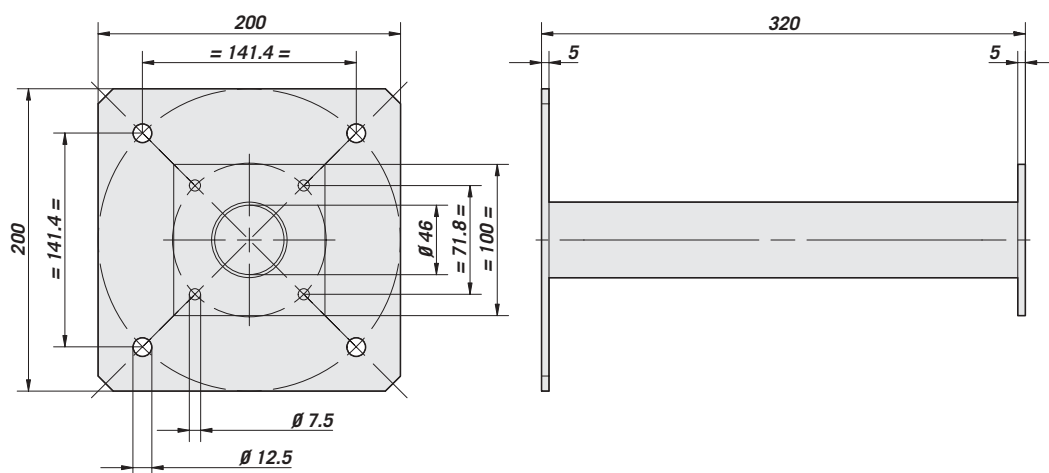


PTBC

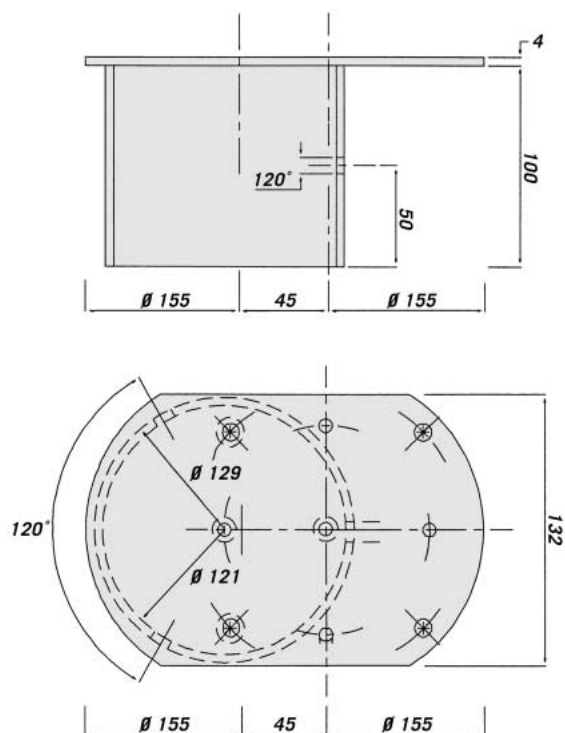


The values are in millimeters.

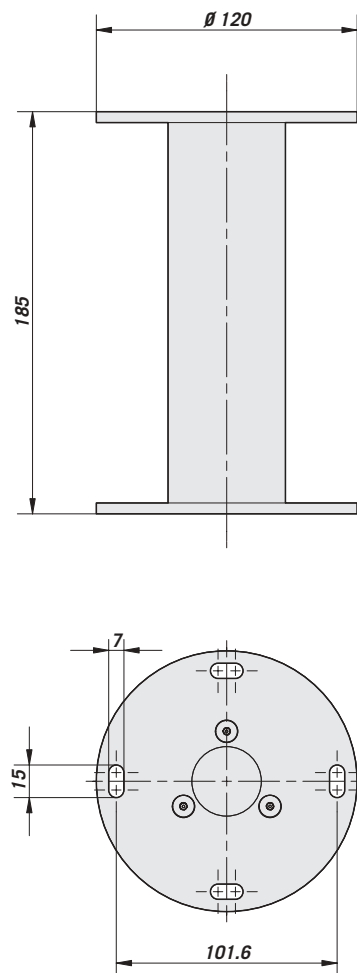
PTDC



PTPC



WFWBTA



The values are in millimeters.



TECHNICAL DATA

GENERAL

WFWBTA

- Made of die-cast aluminium
- Furnace painted with epoxypolyester powder RAL9002

PTAC

- Made of die-cast aluminium
- Furnace painted with epoxypolyester powder RAL9002

PTBC

- Made of die-cast aluminium
- Furnace painted with epoxypolyester powder RAL9002

PTPC

- Made of steel
- Furnace painted with epoxypolyester powder RAL9002

PTDC

- Made of aluminium
- Furnace painted with epoxypolyester powder RAL9002

MECHANICAL

WFWBTA

- Column mounting
- Height: 185 mm (7.2 in)
- Load rating: 50 kg (110 lb)

PTAC

- Wall mounting
- Length 360 mm (14.1 in)
- Load rating 35 kg (77 lb)

PTBC

- Wall mounting
- Length 458 mm (18 in)
- Load rating 50 kg (110 lb)

PTPC

- Top of pole mounting
- Length 335 mm (13.1 in)
- Pole dimensions: Ø 80 - 120 mm (3.1-4.7 in)

PTDC

- Ceiling mounting
- Length 325 mm (12.8 in)
- Load rating 50 kg (110 lb)

ENVIRONMENT

- Indoor/outdoor



Unit Weight (kg / lb):

WFWBTA: 0,4 / 0.88
 PTAC: 0,75 / 1.65
 PTBC: 2,2 / 4.85
 PTPC: 1,9 / 4.1
 PTDC: 0,9 / 1.98

Package Weight (kg / lb):

WFWBTA: 6 / 1.32
 PTAC: 0,95 / 2.09
 PTBC: 2,5 / 5.51
 PTPC: 2,1 / 4.6
 PTDC: 1,2 / 2.64

Package Dimensions (cm / in):

WFWBTA:
 PTAC:
 PTBC:
 PTPC:
 PTDC:

Master Carton (units):

WFWBTA: 15
 PTAC: 12
 PTBC: 10
 PTPC: 15
 PTDC: