



HEG+OHEGBB
(INSTALLED WITH CABLE SHEATHS)



- Indoor/outdoor
- Built in aluminium and epoxy powder painted
- Accommodate large lenses
- Wide range of accessories available
- Solid and reliable
- Weatherproof Standard IP66

Weatherproof housing for outdoor installations. Its internal dimensions make it suitable for several cameras equipped with a wide range of lenses.

The body is made of extruded aluminium and the end-cover plates of die-cast aluminium. Its weatherproof features are ensured by the extruded aluminium sunshield, the EPDM-rubber end-gasket between the end-cover plates and the body, and three cable glands with their specific gaskets. The installation and adjustment of the camera are made easier due to the ability to remove the body, leaving the internal slide in work position for easy operation. A wide range of accessories is available, including heater kit (normal or reinforced for temperatures below -20°C), blower kit, camera power supply, weatherproof junction box, wiper and washer.

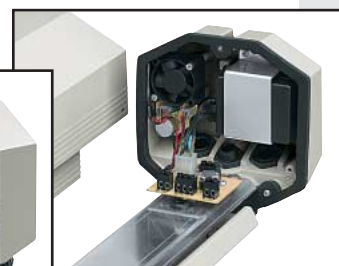
These accessories are supplied as a simple plug-in kit for an easy installation.

Instead of regular cable glands, the housing can be also equipped with connectors. This allows easy on-site replacement and installation on Pan & Tilt heads.

It can be installed with cable sheaths, instead of regular cable glands using the junction box OHEGBB for the wiring harness.

A specific version with a very efficient cooling system is available for installation with IP cameras and for high environmental temperature.

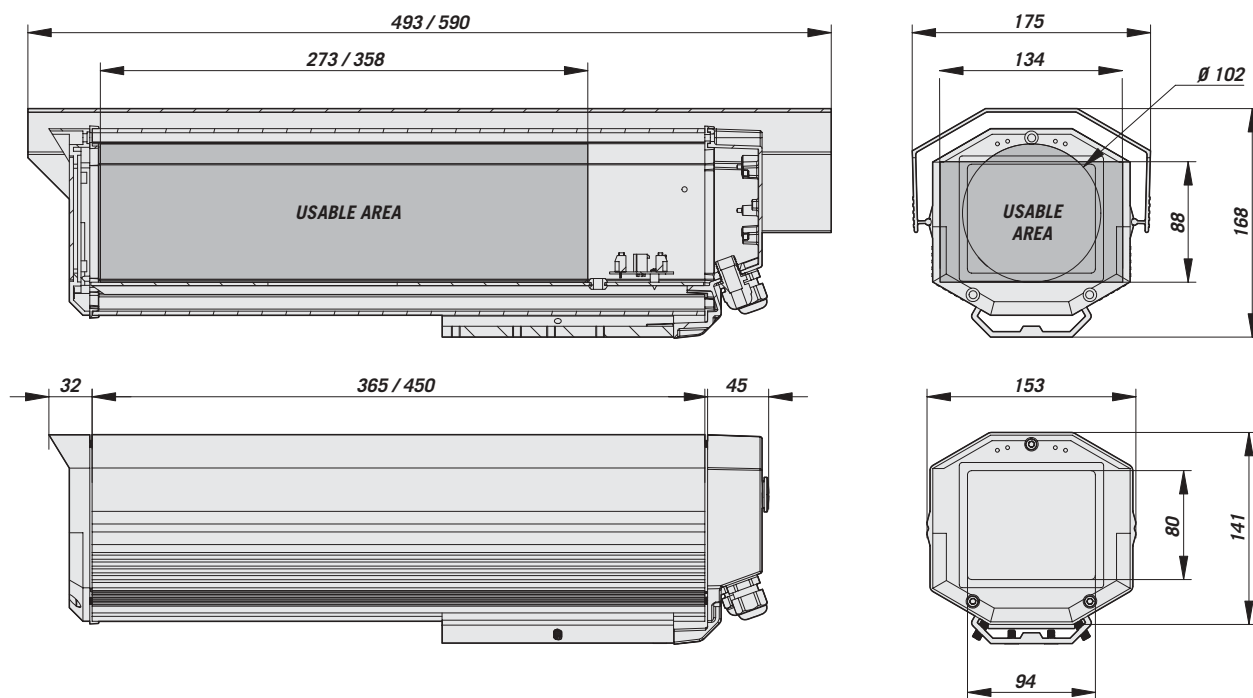
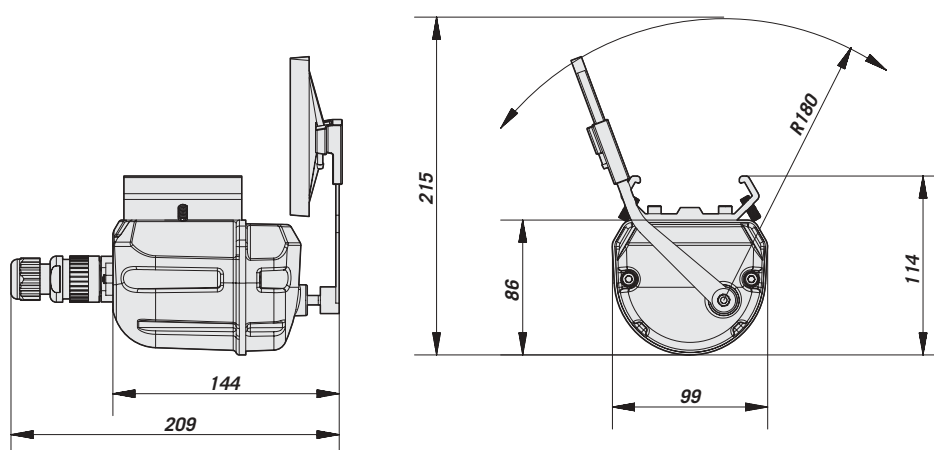
The HEG housing can be utilized for a variety of applications, such as traffic and highway monitoring, particularly if coupled with the Pan & Tilt PTH900 series.





MODELS

	Length mm / in	Sunshield	Heater 115/230VAC	Heater 12VDC/24VAC	12VDC blower with double air exchange filter	24VAC blower with double air exchange filter	Connectors 3+1 and 6+1, connector BNC	Double heater 115/230VAC	Triple heater 115/230VAC
HEG37D0A000	365 / 14								
HEG37K0A000	365 / 14	•							
HEG37K0A016	365 / 14	•				•			
HEG37K0A017	365 / 14	•			•				
HEG37K1A000	365 / 14	•	•						
HEG37K1A074	365 / 14	•						•	
HEG37K1A143	365 / 14	•							•
HEG37K2A000	365 / 14	•		•					
HEG37K2A016	365 / 14	•		•		•			
HEG37K2A017	365 / 14	•		•	•				
HEG47D0A000	450 / 18								
HEG47K0A000	450 / 18	•							
HEG47K0A016	450 / 18	•				•			
HEG47K0A017	450 / 18	•			•				
HEG47K1A000	450 / 18	•	•						
HEG47K1A036	450 / 18	•	•				•		
HEG47K1A074	450 / 18	•						•	
HEG47K1A143	450 / 18	•							•
HEG47K2A000	450 / 18	•		•					
HEG47K2A016	450 / 18	•		•		•			
HEG47K2A017	450 / 18	•		•	•				
HEG47K2A036	450 / 18	•		•			•		

HEG

VIP6A


The values are in millimeters.



TECHNICAL DATA

GENERAL

- Die-cast aluminium back and front cover plates
- Extruded aluminium body and internal slide
- Epoxypolyester powder painted colour RAL9002
- Stainless steel external screws
- Supplied with: instruction manual, desiccant bag, accessories for camera and lens mounting

MECHANICAL

- 3 cable glands: 1xPG9 and 2xPG11
- Internal usable dimensions (WxH): 134x88 mm (5.2x3.4 in)
- Glass window (WxH): 94x80 mm (3.7x3.1 in)

Usable length mm (in):

Housing, Housing with heater, Housing with heater and/or camera power supply, Housing with heater and/or blower:

HEG37 273 mm (10.7 in)

HEG47 358 mm (14 in)

ELECTRICAL

Heater, Ton 15°C+/-3°C (59°F) Toff 22°C +/-3°C (71°F):

OHEH25 IN 12VDC/24VAC, consumption 20W

OHEH24 IN 115/230VAC, consumption 40W

Blower with thermostat and double air filter, Ton 35°C+/-3° (95°F) Toff 22°C +/-3°C (71°F):

HEG37K0A017 IN 12VDC, consumption 4 W (max)

HEG37K2A017 IN 12VDC, consumption 4 W (max) + heater 20W

HEG47K0A016 IN 24VAC, consumption 4 W (max)

HEG47K2A016 IN 24VAC, consumption 4 W (max) + heater 20W

Blower with thermostat and air filter, Ton 35°C+/-3° (95°F) Toff 22°C +/-3°C (71°F):

OHEGCF3 IN 100-240VAC, consumption 4 W (max)

Camera power supply:

OHEPS19B Power supply wide range IN 100-240VAC, 50/60Hz - OUT 12VDC, 1A max

OHEPS20 Power supply IN 230VAC, 50Hz - OUT 24VAC, 400mA max

Double heater, Ton 15°C+/-3°C (59°F) Toff 22°C +/-3°C (71°F):

IN 115/230VAC, max consumption 80W

Fan-assisted triple heater, Ton 15°C+/-3°C (59°F) Toff 22°C +/-3°C (71°F):

IN 115/230VAC, max consumption 120W + 4W fan

ACCESSORIES

OHEGS37A000 Sunshield for HEG37

OHEGS47A000 Sunshield for HEG47

OHEH24 Heater IN 115/230VAC

OHEH25 Heater IN 12VDC/24VAC

OHEPS19B Power supply wide range IN 100-240VAC, 50/60Hz - OUT 12VDC, 1A max

OHEPS20

Power supply IN 230VAC, 50Hz - OUT 24VAC, 400mA max

OHEGCF3

Blower kit IN 100-240VAC with thermostat and air filter, with wide range power supply IN 100-240VAC, 50/60Hz - OUT 12VDC, 1A

VIP6A1

HEG wiper kit IN 230VAC, 50/60Hz

VIP6A2

HEG wiper kit IN 24VAC, 50/60Hz

VIP5WAS01

Tank 5 liters, IN 230VAC washer pump

VIP5WAS02

Tank 5 liters, IN 24VAC washer pump

VIP25WAS01

Tank 25 liters, IN 230VAC washer pump

VIP25WAS02

Tank 25 liters, IN 24VAC washer pump

VIP25WASA01

Tank 25 liters, IN 230VAC washer pump, delivery 30 m

RELATED PRODUCTS

Brackets:

WBJ Wall mount

WFWC Column mount

WCM5 Ceiling mount

P&T:

PTH900 series P&T, 50/60Hz

ENVIRONMENT

- Indoor/outdoor
- Operating temperature:
 - HEG with heater: -20°C up to + 50°C (-4°F up to 122°F)
 - HEG with double heater: down to -40°C (-40°F)
 - HEG with fan-assisted triple heater: down to -50°C (-58°F)
- Resistant to the salt-air fog until 1000 hours (according to ISO9227)

COMPLIANCE TO

- CE according to EN 61000-6-3, EN 60065, EN 50130-4
- IP66
- IP54 (036 model)
- IP44 (016 and 017 models, max. inclination on the longitudinal axis +/- 45°)

SPARE PARTS LIST

OHEGFA04 Front cover for HEG with screws + gaskets

OHEGFPN04 Back cover for HEG with screws + gaskets

OHEGNMAN Cable glands, gaskets and screws for HEG

DOTHE01 Spacers for camera and lens in HEG

OBKFL Replacement filters kit (for 016 and 017 models)



Unit Weight (kg / lb):

HEG37K: 4,3 / 9.4

HEG47K: 4,7 / 10.3

Package Weight (kg / lb):

HEG37K: 4,65 / 10.2

HEG47K: 5,15 / 11.3

Package Dimensions (cm / in):

HEG37K: 19x20x52 / 7.4x7.8x20.4

HEG47K: 19x20x62 / 7.4x7.8x24.4

Master Carton (units):

HEG37K: 8

HEG47K: 6