

Videolarm provides poles that make CCTV surveillance more effective and more cost efficient.

- Parking lots
- Warehouses
- Truck terminals
- Cargo areas
- Jails and prisons
- Residential
- Rural areas



**P1800 - Standard Pole with 20" Transformer Base**

## DESCRIPTION

Our family of CCTV poles includes four models to be used in almost any application.

### PolEvator™

With the PolEvator™, just one technician can quickly and easily service or repair pole mounted domes and housings. All it takes is an adjustable torque, variable speed drill. No bucket trucks, no long ladders. That means less personnel, less time spent on-site, and greater safety. The PolEvator™ is a time saver, a work saver, and a money saver!

### PolEvator™ Features

- 16' height, PV18 features a 20" transformer base for a height of 18 feet
- Extruded aluminum construction
- Factory wired, plug n' play, with power, video, and data connections
- Accepts a wide range of housings and domes
- Anchor jig included on free standing units
- Pole mount and wall mount adapters available
- Patented

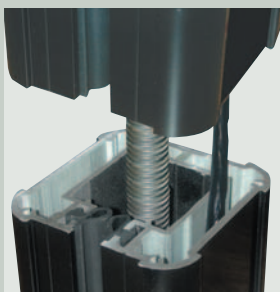
### Standard CCTV Poles

Our 16' pole is designed to accept a wide range of housings and domes. It's made from heavy gauge steel with a durable powder coat finish. Access panels are included on both the top and bottom. Available with a 20" transformer base to raise the height to 18 feet.



**The PolEvator™**

**PoleEvator™** Standard CCTV Poles



**Raceways:** Two internal raceways are provided. One contains composite cable with power, video, and data. The second is reserved for accessory wiring (i.e. emergency call box)



**Locking Wings:** Once raised the locking channels engage to keep the housing steady and in place.



**20" Transformer Base:** This base can be used with either pole and comes complete with NEMA box terminal strip, 115VAC-24VAC transformer and surge protection.

## Specifications

	<b>P1600</b>	<b>P1800</b>	<b>PV16</b>	<b>PV18</b>
<b>Construction</b>	Steel	Steel	Extruded aluminum	Extruded aluminum
<b>Pole Dimensions</b>	16.5' x 4.75" x 4.75"	16.5' x 4.75" x 4.75"	16.5' x 4.75" x 4.75"	16.5' x 4.75" x 4.75"
<b>Base Dimensions</b>	12" x 12"	13" x 13"	12" x 12"	13" x 13"
<b>Weight</b>	250 lbs	250 lbs./34 lbs. base	150 lbs.	150 lbs. / 34 lbs. base
<b>Camera Housing Mount Plate Size</b>	7" x 3.5"	7" x 3.5"	7" x 3.5"	7" x 3.5"
Mounting Pattern - 5.5" x 1" (4) 5/8-16 threaded inserts)				
<b>Maximum Housing Height:</b>	16.5'	18.1'	PV16 - 15.5' raised 5' lowered	PV18 - 17.2' raised 6.7' lowered
<b>Max. Load Capacity</b>	200 lbs.	200 lbs.	40 lbs.	40 lbs.

## Mechanical Specifications PV1600/1800

**Lead Screw** - 1" diameter Zinc phosphate coated steel

**Bearings** - Stainless steel and polymer

**Protective Gasket** - EPDM Rubber

**Max. Windload** -110 mph gusts

**High Flex Composite Cable (PV16 and PV18)**

1 RG179 Coax cable

3 18-gauge Power wires

6 24-gauge Wires for control, options, or twisted pair

## OPTIONS AND ACCESSORIES

**PV1** - Lightning rod for PV16, PV16M, PV18, PV18TB, PV18M, PV18MTB, PV18ME, P1600, PV1800, and PV1800TB

**PV3** - Cover base for the PV18, PV18M, PV18ME, PV18TB, PV18MTB, PV1800, and PV1800TB

**PV4** - Anchor jig (Optional for P1600 and P1800, standard on all PolEvator free standing units)

**PV5** - Junction box, with wiring harness to control pan/tilts in the down position

**WM20G** - Aluminum gooseneck wall bracket with 1.5" pipe thread. For mounting Pelco, AD, Philips, Panasonic, Sensormatic, Kalatel, and other manufacturers' domes to all Videolarm poles

**WM800** - Wall bracket for mounting Videolarm's ACH13 or other manufacturers' standard camera housings to all Videolarm poles.

**WM1A** - Adapter plate for WM800, to work with all poles

**WM2400** - Wall bracket for mounting two Videolarm ACH13s or other manufacturers' standard camera housings to all Videolarm poles.

**PVN** - NEMA box with terminal strip, video and data surge protector and 115 VAC input power transformer for the PV16 and P1600

**PVNE** - PVN with 220 transformer and surge protection

**NOTE:** The PV16P and PV16W both feature mounting brackets for non-free standing applications. The PV16P attaches to existing poles, and the PV16W attaches to walls. When ordering the PolEvator™, be sure you specify the proper model for your application.

## ORDERING CHART

### PV16MW

PolEvator™

16 - 16' Free Standing  
18 - 16' Free Standing,  
includes transformer  
base

P - Pole mount (PV16 only)

W - Wall mount (PV16 only)

M - With wiring for 2 cameras

MP - Pole mount with wiring for 2 cameras (PV16 only)

MW - Wall mount with wiring for 2 cameras (PV16 only)

E - With 220 transformer and surge protection (PV18 only)

ME - 220 transformer and surge protection, wiring for 2 cameras (PV18 only)

TB - Transformer base with no internal equipment (PV18 only)

**NOTE:** All free standing models include PV4 anchor jig

### P1600(TB)

Standard  
Pole

1600 - 16' Free Standing  
1800 - 16' Free Standing,  
includes transformer  
base

TB - Transformer base with  
no internal equipment

**NOTE:** PV4 anchor jig must be ordered separately



**PV4 Anchor Jig**



**PV3 Base Cover**



**PV5 Junction Box**



**PV1 Lightning Rod**



2525 Park Central Blvd. • Decatur GA 30035  
(770) 987-7550 • Fax (770) 987-9705 • 800-554-1124  
e-mail info@videolarm.com • www.videolarm.com