

# Socket® Go Wi-Fi!™ P500

## 802.11g CF Wi-Fi Card



### Wireless LAN Connectivity for your Pocket PC

If your Pocket PC doesn't have built-in Wi-Fi, and you want a wireless connection that doesn't take forever to load email attachments and webpages, the Socket Go Wi-Fi! P500 is the perfect tool for fast Wi-Fi access. Connect to enterprise, public, and residential Wi-Fi 802.11b/g systems to access the Web, email, and corporate servers at top speed. You can also use the card to create peer-to-peer networks, connect to other Wi-Fi users, and share files.



Included is Socket Wi-Fi Companion, an intuitive and graphical software utility that makes it easy to find and connect to networks from a Pocket PC. Advanced tools such as ping and trace route are provided for the power user.



#### Bring Go Wi-Fi! Wherever You Go

At work, connect to the backend server from your company warehouse, or tap into your corporate WLAN from a lobby or conference room. Also connect at public hot spots such as airports, hotels, fast food restaurants, and cafés, which typically offer wireless Internet based on the Wi-Fi 802.11b standard. At home, enjoy the comfort and convenience of wireless Internet whether you're working in your home office or relaxing on the sofa. Because 802.11g was designed for backwards compatibility, the card interfaces directly with 802.11b access points and vice versa.

#### Fast Roaming

Socket has implemented a fast roaming feature that enables you to roam from one access point to another in less than 200 ms. This will enhance the overall VoIP over WLAN experience for mobile users in a closed Wi-Fi environment

#### Security and Authentication

The Socket Go Wi-Fi! P500 works with a variety of WLAN security protocols, including open systems, 40/64-bit and 128-bit WEP encryption, and networks with enhanced security, such as AES, WPA2-Enterprise, WPA, WPA-PSK and 802.1x with EAP-TLS/PEAP authentication.\*

#### Low Power Design

The Battery Friendly® Go Wi-Fi! card uses minimal power, so you can stay connected longer without recharging your mobile computer. When connected to a WLAN, the card is in listening mode about 90% of the time with occasional short bursts of data and draws less than 20 mA. Socket's software also has a Power Save utility with an automatic power save option.

### FEATURES

- Wi-Fi certified, Enterprise Edition — compatible with 802.11b/g Wi-Fi approved WLAN products
- Supports infrastructure WLAN and Ad Hoc peer-to-peer connectivity
- Radio on/off feature (airplane mode)
- Supports AES, WPA2-Enterprise, WPA, WPA-PSK, 802.1x (EAP-TLS/PEAP), 40/64 and 128-bit WEP encryption and open systems\*
- Compatible with devices running Windows Mobile 2003, 2003SE and 5.0
- Power saving mode minimizes power usage while maximizing data throughput when needed
- LEDs on the card show power and WLAN connection status
- Supports voice over Wi-Fi feature with Skype software (service not included)
- Fast roaming enables users to roam between access points in <200 ms, great for VoIP over Wi-Fi
- SDK supports third party application developers to rapidly create and integrate Wi-Fi

### SOFTWARE FEATURES

- User-friendly graphical interface shows connection properties at a glance. Tap on icons to quickly view IP addresses, find networks or perform other basic functions
- Wi-Fi Finder provides detailed information about networks in range and allows you to filter and sort through the WLAN list
- Power Save utility includes automatic power management option
- Ping and trace route utilities are useful troubleshooting tools for advanced users. Comprehensive statistics are displayed in handy graphs and tables



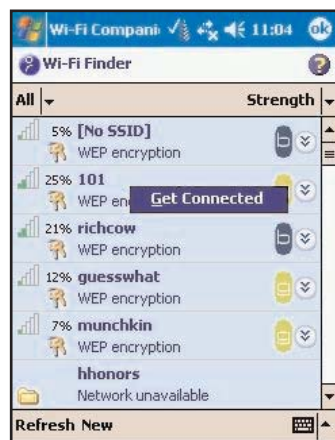
\*In order to use AES and WPA2 functionality with this card you will need the mtghouse AEGIS Client:  
([http://www.mtghouse.com/products/free\\_trial\\_form.asp](http://www.mtghouse.com/products/free_trial_form.asp))

# Socket Go Wi-Fi! P500

802.11g CF Wi-Fi Card



The graphical main screen displays connection properties at a glance. Tap icons to quickly perform related functions.



Tap on a WLAN in the list to quickly connect.

## SPECIFICATIONS:

### Physical Characteristics:

**Card Size:** 56.1 x 42.8 x 3.3 mm

**Weight:** 0.5 oz (14 g)

Inserted portion of card is Type I CF

### Power Consumption (3.3 V Supply):

**Idle:** <20 mA

**Transmission:** 265 mA (peak)

### Transmit Power:

**CCK:** 18.9 dBm typical

**OFDM:** 15.5 dBm typical

### Hardware Support:

Type I CompactFlash slot of Pocket PCs running Windows Mobile 2003, 2003SE and 5.0, including devices from Asus, DAP, Datastrip Dell, HP, TDS, etc.

### Standards Conformance:

- Wi-Fi Certified — Enterprise Edition
- Meets 802.1x requirements
- WPA2-Enterprise
- IEEE 802.11b and 802.11g
- CompactFlash Specification 2.0

**802.11g:** Data rate dynamically shifts between 54, 48, 36, 24, 18, 12, 9 and 6 Mbps.\* (802.11g: OFDM with BPSK, QPSK, 16-QAM and 54-QAM (at 6/9, 12/18, 24/36, and 48/54 Mbps, respectively))

**802.11b:** Data rate dynamically shifts between 11, 5, 5M, 2M, and 1 Mbps.\* (802.11g: DSSS with BPSK, QPSK, and CCK (at 1, 2, and 5.5/11 Mbps, respectively))

### Certification/Compliance:

FCC: Part 15, Class B

CE: EN55024:1998

Industry Canada: RSS210

TELEC

### Frequency Range, Operating Channels:

- North America:

2.412-2.462 GHz, channels 1-11

- Europe ETSI:

2.412-2.472 GHz, channels 1-13

### Access Protocol:

Carrier Sense Multiple Access with Collision Avoidance Protocol (CSMA/CA)

**Indoor Range:** ~ 300 feet (typ. office env.)

**Operating Temp:** 0 to 70° C (32 to 158° F)

**Storage Temp:** -20 to +85° C (5 to 185° F)

### Software Features:

Download software from Socket's web:

[www.socketcom.com/support/support\\_wlan.asp](http://www.socketcom.com/support/support_wlan.asp)

- Compatible with Windows Mobile 2003, 2003SE and 5.0

- Works well with all WLAN security protocols supported by Windows Mobile:

- 40/64-bit and 128-bit WEP encryption

- 802.1x with EAP-TLS or PEAP authentication

- AES, WPA2, WPA and WPA-PSK

For information about the P500x (External Antenna version) or MontaVista Linux and Real-Time Operating Systems support, submit an inquiry online:

[www.socketcom.com/contact/note\\_contact.asp?EmailID=4&Status=Sales&Product=WiFi](http://www.socketcom.com/contact/note_contact.asp?EmailID=4&Status=Sales&Product=WiFi)

**Warranty:** Three years

## FOR ADDITIONAL PRODUCT INFORMATION:

**Website:** [www.socketcom.com](http://www.socketcom.com)

### Ordering Information:

North America SKU# WL6010-676

International SKU# WL6012-678

### Sales Offices - Corporate Headquarters:

37400 Central Court, Newark, CA 94560 USA

**Phone:** 510-744-2700

**Domestic Toll Free:** 800-552-3300

**Fax:** 510-744-2727

**Online:** [www.socketcom.com/contact](http://www.socketcom.com/contact)

