

Socket Dual Serial I/O PC Card



Add Two RS-232 Ports Running up to 921 kbps

Add two RS-232 ports to your Pocket PC, Windows notebook, tablet PC or other mobile computer with the Socket Dual Serial I/O PC Card. Connect to the world of serial devices such as fax/modems, digital cameras, bar code scanners, monitoring and control systems, data collection gear, lab equipment, GPS receivers — you name it!

Connect at High Speeds

Want to transmit data at speeds up to 921 kbps? The Dual Serial I/O Card comes with Socket Hi-Speed COM Tools software and drivers that allow you to use most serial applications at higher speeds, even though they were designed for lower baud rates. You can even set a custom baud rate such as 230.4, 460.8 or 921.6 kbps. Plus, the software enables you to quickly identify and change COM port assignments.



Ultra Low Power is Perfect for Portables

Socket's High-Integration Serial (HIS) chip lowers chip count to improve reliability and reduce power drain. The Dual Serial I/O Card uses less than 5 mA in standby mode, compared to 100 mA for some single-port serial PC Cards! Other dual serial cards use 10 times more power. The low power design of the Socket Dual Serial I/O Card maximizes your mobile computer's battery life, so you can operate longer without recharging.



Rugged Design for Industrial Use

The Socket Dual Serial I/O Card comes in two versions. Besides the standard Dual Serial I/O Card with detachable cables, Socket also offers a "Ruggedized" version designed for tougher environmental conditions, enhanced with fixed cables and a molded strain relief. All cables have a male DB-9 connector.

FEATURES

- Plug-and-play and hot swapping support with:
 - Windows Mobile 2003SE, 2003, 5.0
 - Windows CE v2.11 or greater
 - Windows 98SE, Me, 2000, XP
 - Windows XP Tablet Edition
 - Windows 95 v4.00.050B
- Socket Hi-Speed COM Tools software and drivers enable you to use your serial application at high speeds such as 230.4, 460.8 or 921.6 kbps
- Socket Hi-Speed COM Tools reports and allows you to modify COM port assignments. Advanced users can even set custom baud rates
- Available with either removable or non-removable cables with industry-standard male DB-9 connectors
- Two 16550 compatible UARTs provide internal data buffering to utilize the full bandwidth of RS-232 peripherals including fast modems
- Simultaneous operation and independent configuration of each RS-232 port
- Works in Type II or III PC Card (PCMCIA) slot
- Low power for longer battery life — other dual serial cards use 10 times more power
- Custom cables available for OEMs
- With custom cables, each port can supply +5 V from the host PC to an attached peripheral device
- Custom serial protocols such as RS-422 and RS-485 are available for OEMs
- Limited lifetime PC Card warranty

Socket

Dual Serial I/O PC Card

Connect two devices simultaneously
to your mobile computer



Dual Serial I/O PC Card
SKU# SL0703-081

**Ruggedized
Dual Serial I/O PC Card**
SKU# SL0723-116

SPECIFICATIONS

Physical Characteristics:

PC Card Size: 3.37 x 2.13 x 0.197 in
(85.6 x 54 x 5 mm)

Removable Cable Length: 12 in (31 cm)

Ruggedized Cable Length: 17 in (43 cm)

Connector: 9-Pin D Shell Male

Environmental Conditions:

Operating Temperature: 0 to 70° C

Storage Temperature: -20 to +100° C

Relative Humidity: 10% to 90%
non-condensing

Power Consumption:

Minimum: 5 mA (25 mW)

Typical:

One port: 13 mA (65 mW)

Two ports: 21 mA (105 mW)

Maximum:

One port: 16 mA (96 mW)

Two ports: 27 mA (135 mW)

Compatible Systems: 3V, 5.5V

Operating System Support:

- Windows Mobile 2003, 2003SE, 5.0
- Windows CE v2.11 or greater
- Windows 98SE, Me, 2000, XP
- Windows XP Tablet Edition
- Windows 95 v4.00.950B

Interface Standards:

PC Card Interface: 16 bit PC Card
(formerly PCMCIA) Type II, JEIDA 4.1

Serial Communications:

Asynchronous RS-232,
fully RS-232 compliant

UARTs: Two enhanced 16550 UARTs
with 128 byte FIFOs

Custom options for RS-422, RS-485

Programmable Characteristics:

Character Length: 5-, 6-, 7-, or 8-bits

Parity: Even, odd or none

Baud Rate: Up to 921.6 kbps

Speed varies with Windows version

Certification:

FCC: Part 15, Class B

CE: EN55024:1998, C-TICK s.182

Software Included:

Windows Mobile/CE:

Setup program and device driver

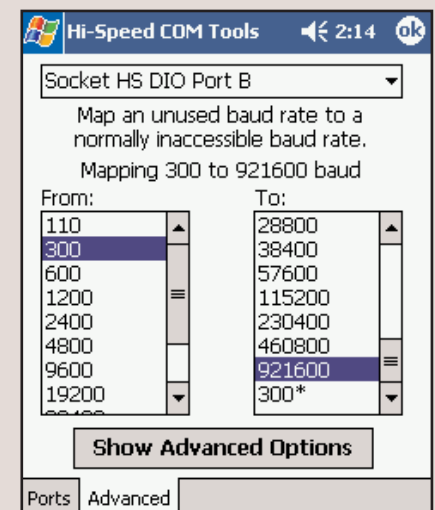
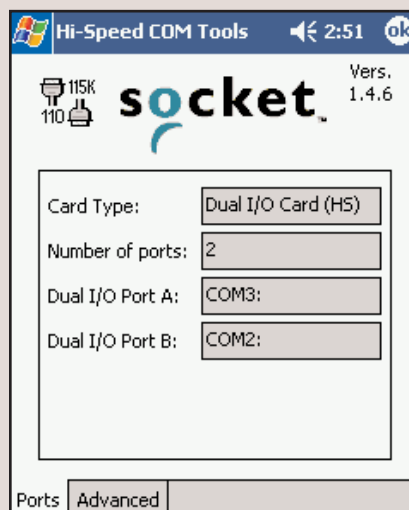
Windows 95/98/Me/2000/XP:

INF and driver

Warranty:

PC Card, Ruggedized Cable: Lifetime

Removable Cable: 90 days



Sales Offices:

Corporate Headquarters:

Socket Communications, Inc.
37400 Central Court, Newark, CA 94560 USA
Phone: 510-744-2700
Domestic Toll Free: 800-552-3300
Fax: 510-744-2727
Online: www.socketcom.com/contact

