

Socket® Secure Digital Scan Card 3P



Aggressive Laser Scanner for Palm and Pocket PC Devices

Great for Outdoors, Harsh Lighting Conditions and Long Distance Scanning Requirements

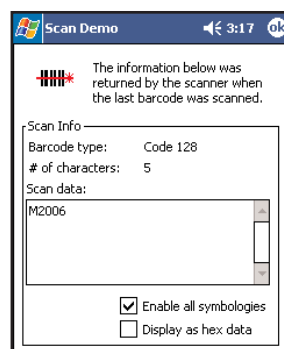
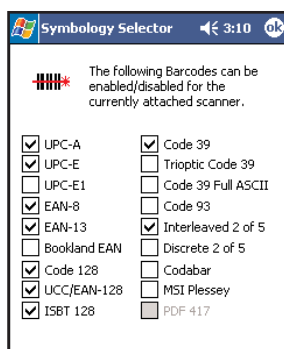
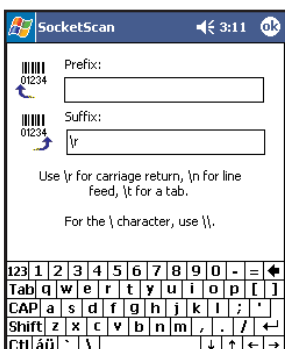


The SD Scan Card 3P (SDSC 3P) is the ideal solution for users who require high volume scanning in demanding conditions such as dim lighting or outdoors in bright sunlight. The compact form factor makes it convenient to carry, easy to handle and allows for a secure fit in the SDIO slot of a mobile computer. The smallest plug-in scanner with a powerful Class 2 Laser, the SDSC 3P capable of scanning through glass, reflective surfaces and Mylar with a one-handed operation.

The SDSC 3P scans all popular linear bar code symbologies including hard-to-read and irregular size bar codes large or small into any mobile computer running Windows Mobile or Palm OS applications. The SDSC 3P is aggressive but easy to use, no special training required.

Battery Friendly® Design

Socket designed the SDSC 3P with Battery Friendly® technology to use minimal power. Drawing only 15 mA in idle mode, the SDSC 3P lets you operate for hours without having to replace or recharge PDA batteries.



FEATURES

- Small bar code scanner integrated with a SDIO plug-in card is only 67.5 mm long and 17 g (0.6 oz)
- Works in the SDIO card slot of:
 - Palm PDA running Palm OS 5.2 or greater
 - Pocket PC running Windows Mobile 2003, 2003SE, 5.0*
- One-handed operation with PDA improves efficiency
- Features powerful Symbol SE-955 Class 2 laser scanner engine, ideal for large volume, long distance and high speed scanning, even VIN bar codes through windshields in bright sun
- State-of-the-art laser technology enables the reading of damaged, poor quality and hard-to-read bar codes, even on curved and reflective surfaces and in dim environments
- Automatically decodes the most popular bar code symbologies such as UPC, EAN, Code 39, Code 93, Code 128, Interleaved 2 of 5, RSS-14, Codabar, and more
- SocketScan keyboard emulation software enters scanned data into any Windows or Palm application — no programming required
- Automatically add Prefix/Suffix functions, such as Carriage Return and Tab, to further eliminate manual keystrokes. SocketScan for Palm can even add time and date stamps
- SocketScan enables you to assign a beep tone or .WAV file to signify a successful scan
- Two-year warranty
- No extra batteries or special power adapter required — the SDIO card gets power from the mobile computer
- SDK for Palm OS or Windows Mobile available to application developers
- Socket Floating Trigger for Windows Mobile allows you to tap an icon on your screen to trigger the scanner

Socket

SD Scan Card 3P



Learn about Class 1 and Class 2 lasers: www.socketcom.com/pdf/TechBriefClass1Class2.pdf

Learn about Vertical Solutions available for the SD Scan Card 3P: www.socketcom.com/solutions/

Additional Product Information:

Website: www.socketcom.com

Ordering Information:

SKU# IS5306-736

Sales Offices - Corporate Headquarters:

37400 Central Court, Newark, CA 94560

Phone: 510-744-2700

Domestic Toll Free: 800-552-3300

Fax: 510-744-2727

Online: www.socketcom.com/contact



SPECIFICATIONS

Physical Characteristics:

Dimensions: 67.5 x 19.8 x 29.7 mm

(2.7 x 0.78 x 1.17 inches)

Total Mass: 17 g (0.6 oz)

Power Consumption (with 3.3V):

Idle: 15 mA (49.5 mW)

Scanning: 86 mA (284 mW)

Environmental Conditions:

Operating Temperature: -20°C to +60°C

(-4° F to +140°F)

Storage Temperature: -40°C to +70°C

(-40° F to +158°F)

Humidity: 5% to 95% (non-condensing)

Operating System Support:

- Windows Mobile 5.0
- Windows Mobile 2003/2003SE with SDIO Now! software from bSQUARE
- Palm OS v5.2 or greater

Interface Standard: SDIO

Bar Code Symbolologies Decoded:

UPC/EAN/JAN, Code 11, Code 39, Code 93, Code 128, Codabar, MSI, Interleaved 2 of 5, Discrete 2 of 5, Chinese 2 of 5, RSS-14, RSS-Limited/Expanded Stacked

Certification:

FCC: Part 15, Class B

CE: EN55024:2003

Scanner Performance:

Decode Distances: 1.5 to 42 inches typical (depends on symbol size, symbology, label media, W-N Ratio, scan angle)

Warranty: Two years

Included Software:

- Installation utility
- SocketScan keyboard emulation software
- Socket Floating Trigger for Windows Mobile

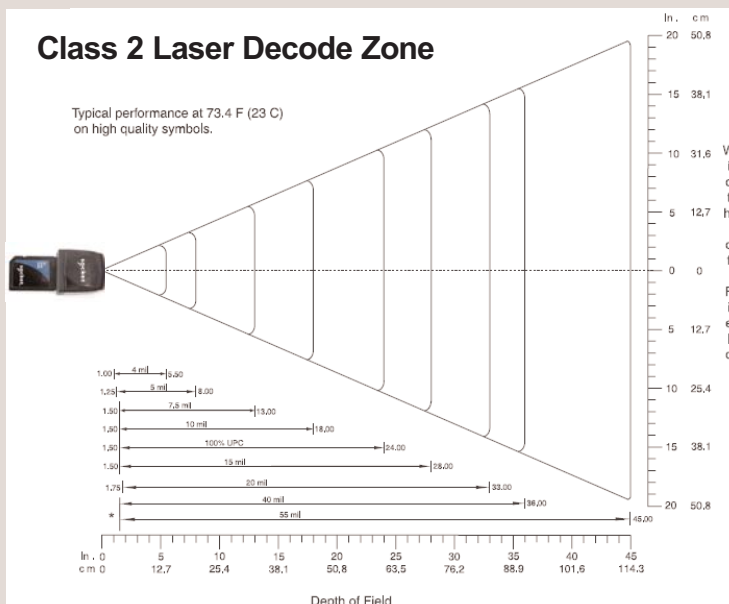
SocketScan Software:

- Reads bar code data into any Windows or Palm OS application as if it were manually typed. No custom programming required
- Configure automatic Prefixes and/or Suffixes (e.g., Carriage Return, Tab) to further eliminate manual keystrokes. SocketScan for Palm even lets you add time and date stamps
- Assign a beep tone or .WAV file to signal a good scan
- Easily enable/disable any of the supported symbolologies
- Scan Demo reports symbology, length and decoded data (ASCII/Hex) of any scanned bar code (10 supported symbolologies)

SocketScan SDK for Palm OS or Windows Mobile available for developers

Class 2 Laser Decode Zone

Typical performance at 73.4 F (23 C) on high quality symbols.



*Minimum distance determined by symbol length and scan angle

