

Socket® Secure Digital Scan Card 3E



World's Smallest Bar Code Scanner, Designed for Palm and Pocket PC

Turn Your Palm PDA or Pocket PC into a High Performance Mobile Bar Code Scanner

If you're a mobile professional using a Palm PDA or Pocket PC with an SDIO slot for an application requiring extensive data entry, the Socket Secure Digital Scan Card (SDSC) 3E may provide an incredible increase in productivity.



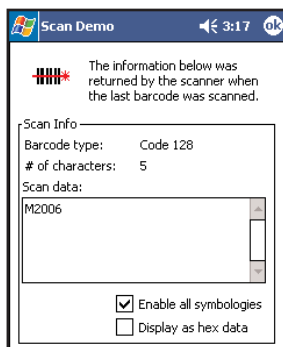
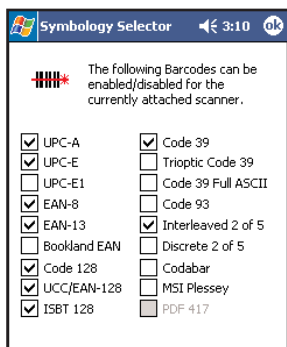
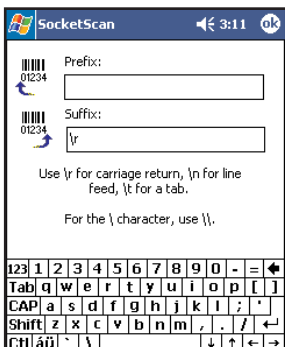
Using manual or virtual keyboards is the slowest, most error-prone method of entering data into mobile computers. If the data to be entered is bar coded, using a bar code scanner is **50 times faster and 10,000 times more accurate than manual data entry.**



The SDSC 3E brings a new level of affordability and convenience to mobile data collection by combining Socket Battery Friendly® SDIO technology with the world's smallest bar code scanner. Just plug the card into your PDA, launch the included SocketScan software, and read bar code data into any Windows or Palm application as if it had been typed on a keyboard — no programming is required.

Battery Friendly® Design

Socket designed the SDSC 3E to be Battery Friendly — to use minimal power. Drawing only 15 mA (50 mW) in idle mode, the SDSC 3E lets you operate for hours without having to replace or recharge your PDA batteries.



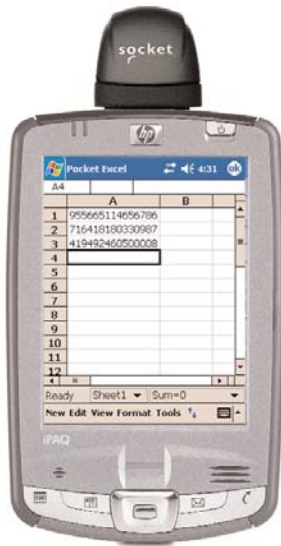
FEATURES

- Miniature bar code scanner integrated with a SDIO plug-in card is only 32 mm long and 8 g (0.3 oz)
- Works in the SDIO card slot of the following devices*:
 - Palm PDA running Palm OS 4.1 or greater
 - Pocket PC running Windows Mobile 2003, 2003SE or 5.0**
- One-handed operation with PDA improves efficiency
- Features state-of-the-art linear CMOS imaging technology in the smallest bar code scan engine available today
- Automatically decodes the most popular bar code symbologies such as UPC, EAN, Code 39, Code 128, Interleaved 2 of 5, Code 93 and more
- LED light source poses no safety or health hazards
- SocketScan keyboard emulation software enters scanned data into any Windows or Palm application — no programming required
- With SocketScan, you can automatically add Prefix and/or Suffix functions, such as Carriage Return and Tab, to further eliminate manual keystrokes. SocketScan for Palm OS even lets you add time and date stamps
- SocketScan enables you to assign a beep tone or .WAV file to signify a successful scan
- Two-year warranty
- No extra batteries or special power adapter required — the SDIO card gets power from the mobile computer
- SDK for Palm OS or Windows Mobile available to application developers
- Socket Floating Trigger for Windows Mobile puts an icon on your Pocket PC screen that you can tap to trigger the scanner

*SDIO slot of Pocket PC must support I/O (Input/Output)

**Windows Mobile 2003/2003SE devices require SDIO Now! software from bSQUARE in ROM

Socket SD Scan Card 3E



SD Scan Card 3E
SKU# IS5300-464

SPECIFICATIONS

Physical Characteristics:

SDIO Card: 32 x 24 x 2 mm
Scanner: 27.1 x 29.6 x 14.8 mm
Total Mass: 8 g (0.3 oz)

Power Consumption (with 3.3V):

Idle: 15 mA (50 mW)
Scanning: 56 mA

Operating System Support:

- Windows Mobile 5.0
- Windows Mobile 2003/2003SE with SDIO *Now!* software from bSQUARE
- Palm OS v4.1 or greater

Interface Standards: SDIO

Bar Code Symbologies Decoded:

UPC/EAN, Code 128, Code 39, I 2of5, D2of5, Code 93, Codabar, MSI/Plessey, Code 11 and Web Code

Scanner Performance:

Decode Distances: 1.5 to 24+ inches depends on symbol size, symbology, label media, W-N Ratio, scan angle

Included Software:

- Installation utility
- SocketScan with keyboard emulation for Palm and Windows Mobile
- Socket Floating Trigger (only for Windows Mobile)

SocketScan Software:

- Reads bar code data into any Windows or Palm OS application as if it were manually typed
- Lets you add Prefixes and/or Suffixes (e.g., Carriage Return or Tab) to further eliminate manual keystrokes
- Lets you assign a beep tone or .WAV file to signal a good scan
- Lets you easily enable/disable any of the supported symbologies
- Scan Demo reports symbology, length and decoded data (in ASCII or Hex) of any scanned bar code (among 10 supported symbologies)

Warranty: Two years

Certification:

FCC: Part 15, Class B
CE: EN55024:1998 **C-TICK** s.182

SocketScan SDK for Palm OS or Windows available for developers

Additional Product Information:

Website: www.socketcom.com

Sales Offices - Corporate Headquarters:

37400 Central Court, Newark, CA 94560

Phone: 510-744-2700

Domestic Toll Free: 800-552-3300

Fax: 510-744-2727

Email: www.socketcom.com/contact

