

# Socket Cordless 56K Modem

with Bluetooth® Wireless Technology

## Internet access that won't tie you down

Why sit confined at a desk when you can check email and surf the Internet while lounging in bed? Socket's Cordless 56K Modem lets you comfortably access the Internet from your Pocket PC, Palm PDA, notebook or tablet computer without any cables tying you down. Plus, the modem features V.90 and V.92 advanced modem technologies for faster data and quicker connections.

Cellular coverage isn't ubiquitous, and not all hotels have LAN or Wi-Fi, but telephone access is practically everywhere. The Socket Cordless 56K Modem is great for business travelers who need a reliable solution for Internet access and can't depend on LAN/Wi-Fi availability. Plus, the modem avoids the hassles of spotty cellular data service, cellular network incompatibility, and expensive roaming charges.



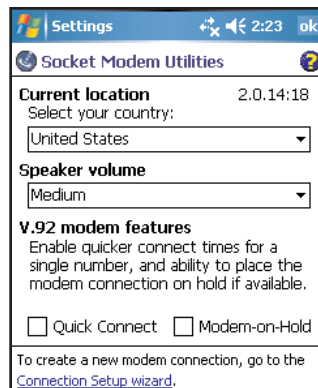
Just plug the modem into an analog phone line, launch the *Bluetooth* connection, and enjoy up to 328 ft (100 m) of wireless freedom, whether you're sitting outside on the patio or lying in bed. It works with almost any *Bluetooth* enabled computer that supports a Dial-up Networking client. No special drivers or software installation is needed — the modem works right out of the box.

## Optional Software for Windows Mobile

Socket has developed great software tools for Pocket PCs: Connect!Agent, Dial-up Connection Setup Wizard (not shown), and Modem Utilities.



Socket  
Connect!Agent  
makes *Bluetooth*  
extremely easy  
to use by  
automating the  
wireless  
connection.



Socket Modem  
Utilities software  
allows you to set  
up the modem  
for different  
countries, adjust  
the sound  
volume, and  
enable V.92  
features.

(Modem-on-Hold  
not supported.)

## FEATURES

- Works with *Bluetooth* enabled computers:
  - Pocket PCs and Palm PDAs
  - Mac OS or Windows notebooks
  - Windows XP tablets
  - Any *Bluetooth* enabled computer that supports a Dial-up Networking client
- Compact and light, perfect for travel
- Four LEDs — Modem activity, *Bluetooth* connection, battery level, charging status
- Internal speaker indicates call progress
- Rechargeable Lithium-ion battery lasts for 3 hours of continuous use wherever AC power is not available
- Three Year Warranty

## Bluetooth Hardware Features

- *Bluetooth* 1.1 certified, Class 1 radio provides a strong and reliable connection
- Internal antenna is safe from damage and keeps the modem compact
- *Bluetooth* Profiles supported: General Access, Service Discovery, Dial-up Networking, Serial Port, Fax

## Modem Standards & Protocols Supported

- ITU-T V.92, V.90, 56K flex data modulation
- V.44 for improved data compression
- V.92 Quick Connect
- Hayes AT Commands
- Asynchronous and full-duplex
- Auto or manual answer, origination
- Standard error correction and data compression tools

- Auto-step downward compatibility for connection

- Fax transfer rate up to 33.6 kbps, Class 1 fax command set

## Optional Software for Windows Mobile

Installation is optional, no drivers required

- Connect!Agent automates the *Bluetooth* connection
- Modem Utilities allows you to set up the modem for different countries, adjust the sound volume, and enable V.92 features
- Connection Setup Wizard helps you easily set up a dial-up connection to your ISP

# Socket Cordless 56K Modem

with Bluetooth® Wireless Technology



## In the Box:

- Socket Cordless 56K Modem
- AC charger with plugs for U.S., U.K., Europe, Australia
- Retractable RJ-11 cable
- Installation CD with optional software and user documentation
- Rechargeable lithium-ion battery
- Nylon travel pouch



Items not shown to scale and may vary slightly from those shown.

## SPECIFICATIONS

### Physical Characteristics

L x W x H: 3.1 x 1.1 x 2.9 inches  
(79 x 26.5 x 73 mm)

Weight with Battery : 3.2 oz. (91 g)

### Power Consumption

Active: 160 mA (Modem)  
200 mA (Bluetooth)

Transmitting)

Idle: 20 mA (Modem)  
20 mA (Bluetooth)

Battery capacity: 900 mA

### Modem Characteristics

Data Mode:

- ITU-T V.92\*: 56 kbps
- ITU-T V.90: 56 kbps upstream, 33.6 kbps downstream
- ITU-T V.34: (33.6 kbps)
- ITU-T V.32bis: (14.4 kbps)
- ITU-T V.32: 9.6 kbps, V.22 (1200 bps)
- ITU-T V.23: 1200/75 (FSK)
- ITU-T V.22bis: (2.4 kbps)
- ITU-T V.21: 300 bps (FSK)
- ITU-T Bell 212A (1200 bps), Bell 103 (300 bps)

### Error Mode and Data Compression:

- ITU-T V.42bis: data compression and MNP 5 data compression
- ITU-T V.42: error correction (LAPM, MNP)
- ITU-T V.44 data compression

### Fax Mode:

- ITU-T V.34: 33.6 kbps
- ITU-T V.17: 14.4 kbps
- ITU-T V.29: 9.6 kbps
- ITU-T V.27ter 4.8 kbps
- ITU-T V.21 Channel 2: 300 bps
- ITU-T T.31 Class 1 Fax Command Set
- ITU-T V.250 AT Command Set

### Operating Modes:

- Automatic & Manual Call
- Asynchronous
- Full Duplex
- Originate

Receiver Sensitivity: 0-43 dBm

Dialing Methods: Tone and Pulse

Line Requirement: Public Switched Telephone Network (PSTN)

### Bluetooth Characteristics

Profiles: Dial-up Networking, Serial Port, Fax, Service Discovery, General Access

Protocol: Bluetooth 2.45 GHz ISM band frequency hopping

Antenna: Integrated

Radio Range: Maximum 328 ft (100 m), depending on environment

Connection: Point-to-point

Main Chip: CSR BlueCore 2

Security: Encrypted link

RF Power Output: 100 Milliwatt (Class 1)

### Environmental Conditions

Operating Temp: 0 to +50° C

Storage Temp: -20 to +90° C

Humidity: 10% to 90% non-condensing

### Hardware Support

Any Bluetooth enabled computer with support for a Dial-up Networking client, including:

- Pocket PCs and Palm PDAs
- Windows and Mac OS notebooks
- Windows XP tablet computers

### Software Included for Windows Mobile:

- Connect!Agent
- Connection Setup Wizard
- Modem Utilities
- Modem drivers

### Certification/Compliance

- FCC Parts 15, 68
- Industry Canada
- TELEC and JATE
- RoHS
- Safety - ETL + ETLc
- CE, CTR21, ETS
- Bluetooth 1.1

\*V.92 features require a V.92 Internet Service Provider.

## FOR ADDITIONAL INFORMATION

Website: [www.socketcom.com](http://www.socketcom.com)

SKU#: CM7100-510

### Sales Offices - Corporate Headquarters:

37400 Central Court, Newark, CA 94560

Phone: 510-744-2700

Domestic Toll Free: 800-552-3300

Fax: 510-744-2727

Online: [www.socketcom.com/contact](http://www.socketcom.com/contact)

