

# Socket® CompactFlash Scan Card 5M



## Turn Your Pocket PC, Notebook or Tablet PC into a **Mid-Range** Mobile Bar Code Scanner

If you're a mobile professional using a Pocket PC, notebook or tablet computer for an application requiring Mid-Range data entry performance, The Socket CompactFlash (CF) Scan Card 5M may provide an incredible increase in productivity.

Virtual keyboards and handwriting/voice recognition are slow, error-prone methods of entering data into mobile computers. If the data to be entered is bar coded, using a laser scanner is 50 times faster and 10,000 times more accurate than manual data entry.



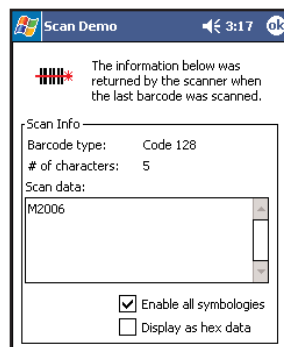
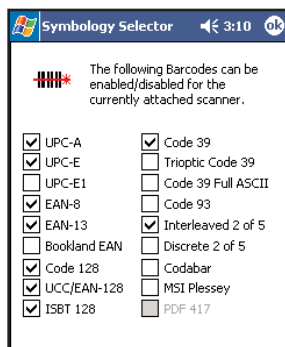
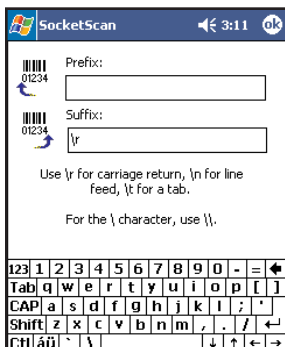
The CF Scan Card 5M brings a new level of convenience and portability to mobile data collection by combining Socket CompactFlash technology with the world's smallest and lightest laser scanner engine from Symbol Technologies.



Just plug the card into your Windows-based mobile computer, launch the included SocketScan software, and read bar code data into any Windows application as if it had been typed on a keyboard — no programming needed. State-of-the-art laser technology enables the CF Scan Card 5M to read even damaged, poor quality or hard-to-read bar codes.

## Mobility Friendly Means Low Power

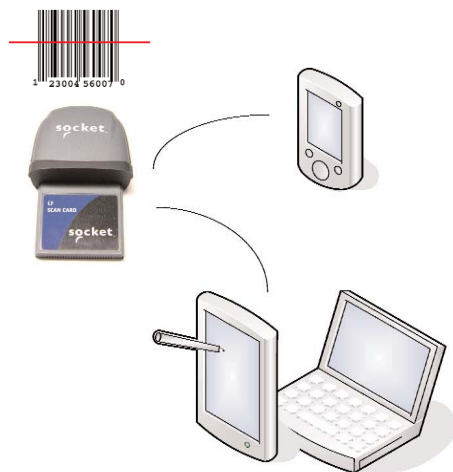
Socket designed the Mobility Friendly™ CF Scan Card to use minimal power. Drawing only 4 mA (13 mW) in idle mode, the CF Scan Card lets you operate for hours without having to replace or recharge your mobile computer's batteries.



## FEATURES

- Type II CF card with integrated laser scanner plugs into Type II CompactFlash slot. With adapter, works in PC Card (PCMCIA) slot
- Compatible with computers running:
  - Windows Mobile 2003, 2003SE, 5.0
  - Windows XP, XP Tablet Edition
- One-handed operation with a handheld device improves efficiency
- Features Symbol SE955 Class 1 laser scanner engine, the smallest laser scanning engine available today
- State-of-the-art laser technology enables the reading of damaged, poor quality, and hard-to-read bar codes
- SocketScan keyboard emulation software enters scanned data into any Windows program as virtual keystrokes
- With SocketScan, you can automatically add Prefix and/or Suffix functions, such as Carriage Return and Tab, to further eliminate manual keystrokes
- SocketScan enables you to assign a scanner trigger button, and also a beep tone or .WAV file to signify a successful scan
- Any of 18 bar code symbologies can be easily enabled/disabled with SocketScan's "Symbology Selector"
- SocketScan "Scan Demo" reports symbology, length and decoded data (in ASCII or Hex) of any scanned bar code (of 19 supported symbologies)
- Two year warranty
- No extra batteries or special power adapter required — the CFSC 5M gets power from the mobile computer
- Works with Windows-based development tools so you can easily create custom applications
- SDK available to application developers

# Socket CompactFlash Scan Card 5M



Learn about Class 1 and Class 2 lasers: [www.socketcom.com/pdf/TechBriefClass1Class2.pdf](http://www.socketcom.com/pdf/TechBriefClass1Class2.pdf)

Learn about Vertical Solutions featuring the CF Scan Card: [www.socketcom.com/solutions/](http://www.socketcom.com/solutions/)

**Additional Product Information:**  
**Website:** [www.socketcom.com](http://www.socketcom.com)

**Ordering Information:**  
SKU# IS5025-609

**Sales Offices - Corporate Headquarters:**  
37400 Central Court, Newark, CA 94560  
**Phone:** 510-744-2700  
**Domestic Toll Free:** 800-552-3300  
**Fax:** 510-744-2727  
**Online:** [www.socketcom.com/contact](http://www.socketcom.com/contact)



## SPECIFICATIONS

### Physical Characteristics:

**CF Card Size:** 43 x 43 x 5 mm  
**Scanner Head Size:** 83 x 51 x 20 mm  
**Total Mass:** 34 g (1.2 oz)

### Power Consumption (with 3.3V):

**Idle:** 4 mA (13 mW)  
**Scanning:** 135 mA (446 mW)

### Bar Code Symbolologies Decoded:

Code 39, UPC/EAN/JAN, MSI, Code 128, Code 93, Codabar, Interleaved 2 of 5, Discrete 2 of 5, RSS-14, RSS-Limited/Expanded Stacked

### Operating System Support:

- Windows Mobile 2003, 2003SE, 5.0
- Windows XP

### Compatibility: Windows COM Port

### Class 1 Decode Distances:

2.2 to 30+ inches (depending on symbol size, symbology, label media, W-N Ratio, and scan angle)

### Environmental Conditions:

**Operating Temp:**  
-4° to 131° F (-20° to 55° C)  
**Storage Temperature:**  
-40° to 140° F (-40° to 60° C)  
**Humidity:** 5-95% non-condensing

**Warranty:** Two years

### Certification:

FCC: Part 15, Class B  
CE: EN55024:1998, C-TICK s.182, VCCI CompactFlash Spec. 2.0

**Laser:** Symbol SE955 Class 1 laser

### Interface Standards:

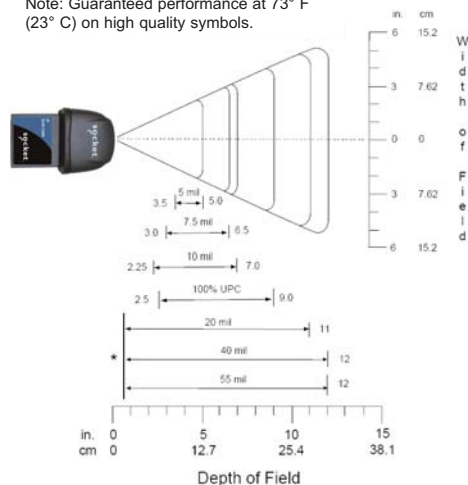
- CompactFlash (CF) Type II
- PC Card (PCMCIA) with Type II CF-to-PC Card adapter, available separately: Product # AC4001-515

### SocketScan Software:

- Reads bar code data into any Windows application as if manually typed
- Lets you add Prefixes and/or Suffixes (e.g., Carriage Return) to further reduce manual keystrokes
- Lets you assign a beep tone or .WAV file to signify a good scan
- Lets you easily enable/disable any of 18 common symbolologies
- Scan Demo reports symbology, length and decoded data (in ASCII or Hex) of any scanned bar code (for 18 supported symbolologies)
- SDK available for developers

### Class 1 Laser Decode Zone

Note: Guaranteed performance at 73° F (23° C) on high quality symbols.



\*Minimum distance determined by symbol length and scan angle

