

# Socket® CompactFlash Scan Card 5E



## Turn Your Pocket PC, Tablet or Notebook PC into an **Entry Level** Mobile Bar Code Scanner

If you're a mobile professional using a Pocket PC, notebook or tablet computer for an application requiring Entry Level data entry, the Socket CompactFlash (CF) Scan Card 5E may provide an incredible increase in productivity.

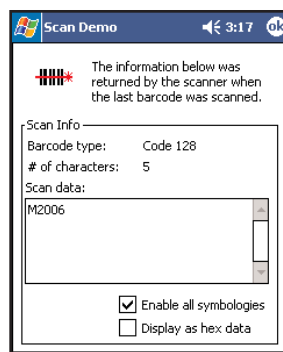
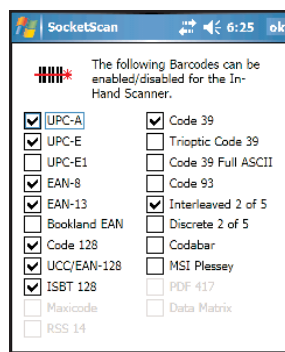
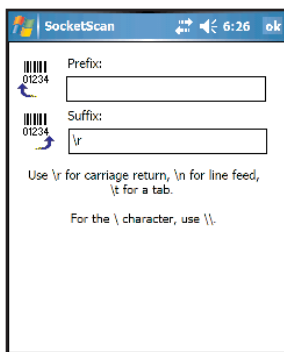
Virtual keyboards and handwriting/voice recognition are slow, error-prone methods of entering data into mobile computers. If the data to be entered is bar coded, using a bar code scanner is 50 times faster and 10,000 times more accurate than manual data entry.



The CF Scan Card 5E brings a new level of affordability and convenience to mobile data collection with Socket Mobility Friendly™ CompactFlash technology. Just plug the card into your Windows-based computer, launch the included SocketScan software, and read bar code data directly into any Windows application, as if it had been typed on a keyboard — no programming is required.

## Mobility Friendly Means Low Power

Socket designed the Mobility Friendly CF Scan Card to use minimal power. Drawing only 4 mA (13 mW) in idle mode, the CF Scan Card lets you operate for hours without having to replace or recharge your computer's batteries.



## FEATURES

- Type II CF card with integrated scanner plugs into Type II CompactFlash slot. With adapter, works in PC Card (PCMCIA) slot\*
- Compatible with computers running:
  - Windows Mobile 2003, 2003SE, 5.0
  - Windows XP, XP Tablet Edition
- One-handed operation with a handheld device improves efficiency
- Features state-of-the-art CMOS imaging technology
- Automatically decodes the most popular bar code symbologies, including UPC, EAN, Code 39, Code 128, Interleaved 2 of 5, Code 93, and more
- LED light source poses no safety or health hazards
- SocketScan keyboard emulation software enters scanned data into any Windows application — no programming needed
- With SocketScan, you can add automatic Prefix and/or Suffix functions, such as Carriage Return and Tab, to further eliminate manual keystrokes
- SocketScan enables you to assign a scanner trigger button, and also a beep tone or .WAV file to signify a successful scan
- Any of 16 bar code symbologies can be easily enabled/disabled with SocketScan "Symbology Selector"
- SocketScan "Scan Demo" reports symbology, length and decoded data (in ASCII or Hex) of any scanned bar code (of 17 supported symbologies)
- Two year warranty
- No extra batteries or special power adapter required — the CFSC 5E gets power from the mobile computer
- SDK for mobile computers available to application developers
- Works with Windows-based development tools so you can easily create custom applications
- Socket Floating Trigger for Windows Mobile puts an icon on your Pocket PC screen that you can tap to trigger the scanner

# Socket CompactFlash Scan Card 5E



## Additional Product Information:

Website: [www.socketcom.com](http://www.socketcom.com)

## Ordering Information:

SKU# IS5024-608

## Sales Offices - Corporate Headquarters:

37400 Central Court  
Newark, CA 94560

Phone: 510-744-2700

Domestic Toll Free: 800-552-3300

Fax: 510-744-2727

Online: [www.socketcom.com/contact](http://www.socketcom.com/contact)

Learn about Vertical Solutions  
featuring the CF Scan Card:

[www.socketcom.com/solutions/](http://www.socketcom.com/solutions/)

## SPECIFICATIONS

### Physical Characteristics:

**CF Card Size:** 43 x 43 x 5 mm

**Scanner Head Size:** 83 x 51 x 20 mm

**Total Mass:** 28 g (1 oz)

### Power Consumption (with 3.3V):

**Idle:** 4 mA (13 mW)

**Scanning:** 40 mA

### Bar Code Symbolologies Decoded:

Code 39, UPC/EAN, MSI/Plessey,  
Code 128, Code 93, Codabar,  
Interleaved 2 of 5, Discrete 2 of 5,  
Code 11

### Operating System Support:

- Windows Mobile 2003, 2003SE, 5.0
- Windows XP, XP Tablet Edition

**Compatibility:** Windows COM Port

### Scanner Performance:

#### Decode Distances:

1.5 to 24+ inches (depending on  
symbol size, symbology, label media,  
W-N Ratio, and scan angle)

### Environmental Conditions:

#### Operating Temp:

-4° to 131° F (-20° to 55° C)

#### Storage Temperature:

-40° to 140° F (-40° to 60° C)

**Humidity:** 5-95% non-condensing

**Warranty:** Two years

### Certification:

FCC: Part 15, Class B

CE: EN55024:1998 C-TICK s.182, VCCI

CompactFlash Spec. 2.0

### Interface Standards:

- CompactFlash (CF) Type II
- PC Card (PCMCIA) with Type II  
CF-to-PC Card adapter, available separately:  
Product # AC4001-515)

### Included Software:

- Installation utility
- SocketScan with keyboard emulation for  
Windows Mobile, Windows XP
- Socket Floating Trigger for Windows Mobile

### SocketScan Software:

- Reads bar code data into any Windows  
application as if manually typed
- Lets you add Prefixes and/or Suffixes  
(e.g., Carriage Return) to further reduce  
manual keystrokes
- Lets you assign a beep tone or .WAV file  
to signify a good scan
- Lets you easily enable/disable any of 18  
common symbologies
- Scan Demo reports symbology, length and  
decoded data (in ASCII or Hex) of any  
scanned bar code (for 18 supported  
symbologies)
- SDK available for developers

## CMOS Image Decode Zone

Note: Typical performance at 73.4° F (23° C)  
on high quality symbols.

