

Socket RFID Reader Card Series 6



Add Plug-in RFID Capabilities to Pocket PC Applications

Now add high frequency RFID capabilities to your mobile data collection application with Socket's CompactFlash RFID Reader Card. This product reads and writes to all ISO 15693 and many proprietary 13.56 MHz RFID tags being used or deployed for asset tracking, access control, process control and healthcare/medical/pharmaceutical applications.



FEATURES

- Integrated Type II CF card and scanner works in Type II CF slot of Pocket PCs
- High Frequency 13.56 MHz Reader/Writer
- Approx. read range of 2.0 inches (5.1 cm), depending on tag antenna size
- Reads and writes to the most popular HF ISO15693 tags, such as ICode SLI/SL2, LRI512, my-d, Tag-It HF-I
- Reads and writes to these proprietary HF tags: ICode 1, Tag-It HF, and PicoTag
- Reads multiple tag IDs simultaneously in Loop Mode
- Supported by the same SocketScan and SDK that supports all of Socket's bar code scanning products
- SocketScan software for Windows converts tag IDs and/or data from selected memory blocks into virtual keystrokes. Windows applications treat the data as if it were manually typed
- SocketScan lets you create prefixes and suffixes, such as Tab or Carriage Return, to further eliminate keystrokes during data collection
- This *Battery Friendly* solution draws only a few milliamps of current in standby mode, extending the battery life of your Pocket PC
- No extra batteries or special power adapter required. The card gets power from the Pocket PC
- Works with Windows-based development tools, so you can easily create custom applications



Like all of Socket's bar code scanning products, the RFID Reader Card is supported by SocketScan™ keyboard wedge software, which sends the RFID tag ID and/or data from selected memory blocks to any Windows applications as virtual keystrokes — no custom programming needed! A small RFID Demo application allows manual writing to the accessible memory blocks for demonstration purposes.

For developers who wish to embed control of the RFID Reader's read/write functionality into their applications, an SDK is available from Socket at: www.socketcom.com/embedded/socketscan.asp

Mobility Friendly™ Means Low Power

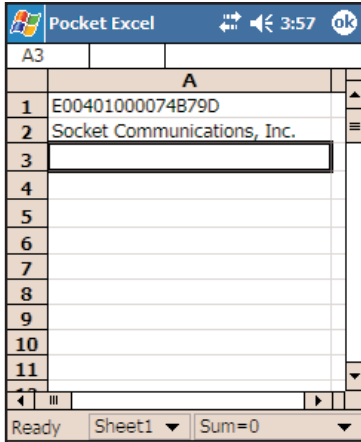
As with all of our products, Socket designed the Mobility Friendly CF RFID Reader Card to use minimal power. Drawing only 11 mA (36 mW) in idle mode, the CF RFID Reader Card will operate for hours without requiring you to recharge the batteries in your Pocket PC.



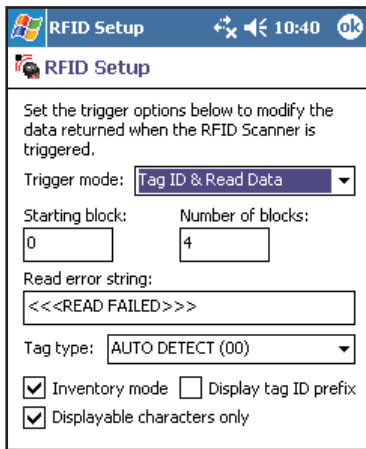
Use the reader for applications such as security identification and patient tracking.

Socket RFID Reader Card Series 6

SKU# RF5400-542



SocketScan enters the tag ID and/or data from selected memory blocks directly into any Windows program as if it were manually typed.



SocketScan lets you configure this product to read the tag ID, data from selected memory blocks or both into any Windows program.

SPECIFICATIONS:

Physical Characteristics

CompactFlash Card Size:
1.43 x 1.68 x 0.20 inches
(36 x 42.7 x 5.0 mm)
Weight: 1.1 oz. (34 g)
Scanner Head Size:
1.76 x 1.93 x 0.82 inches
(45 x 49 x 21 mm)

Power Consumption (3.3 V):

Idle: 11 mA
Read/Write: 52 mA
Also operates at 5 V

Environmental:

Operating Temperature:
-10 to +50°C (-4 to +122°F)
Storage Temperature:
-40 to +70°C (-40 to +158°F)

Humidity: 5-95% RH non-condensing

Frequency: 13.56 MHz (HF)

Maximum Read Range:

Approx. 2.0 inches (5.1 cm),
depending on tag antenna size

Compatibility: Windows COM port

HF RFID Tags Supported

ISO15693:

- ICode SLI/SL2
- LRI512
- my-d
- Tag-It HF-I

Proprietary

- ICode 1
- PicoTag
- Tag-It HF



Operating System Support

Windows CE.NET v4.2 and 5.0
(Windows Mobile)

Certification

FCC: Part 15, Class B
CE: EN55024:1998
C-TICK: s.182

Warranty: 2 years

To learn more about RFID, please visit:
www.socketcom.com/pdf/SocketandRFID.pdf

ADDITIONAL PRODUCT INFORMATION:

Website: www.socketcom.com

Phone: 510-744-2721

Sales Offices:
Corporate Headquarters:
37400 Central Court
Newark, CA 94560

Domestic Toll Free: 800-552-3300 x2721

Fax: 510-744-2727

Online: www.socketcom.com/contact

