

Socket® CF Mag Stripe Reader Card 4E



Turn Your Pocket PC or Windows XP Tablet into a Mobile Point of Sale (POS) Terminal

The Socket CF Mag Stripe Reader Card 4E reads data from one, two, or three track magnetic stripes on ID cards, driver's licenses or credit cards into a Pocket PC, notebook, or tablet PC. The card works in Pocket PCs and Windows XP notebook and tablet computers. It's the perfect solution for mobile Point of Sale applications, whether you want to eliminate long lines in a department store or need to process credit cards at outdoor events.



The Socket CF Mag Stripe Reader Card is great to use in conjunction with a cellular or Wi-Fi network. You can perform credit card authorizations, manage inventory and prices, and look up credit balances and other account information anywhere within the network coverage area. For security applications, set up a mobile authentication system that wirelessly accesses database records for identity verification.

The Socket CF Mag Stripe Reader Card is supported by the same SocketScan software and SDK used with all Socket bar code scanning and RFID products. SocketScan enters data directly into any Windows application as if it were manually typed, and requires no custom programming. The SDK (not included) is required for more complex applications using parsed or encrypted data.

Compact and Energy-Efficient Design

No batteries or power adapter are needed — the sleek and compact CF Mag Stripe Reader Card draws power from the host computer. The Mobility Friendly™ card uses minimal power, only 7 mA in standby mode, to maximize the battery life of your mobile computer.



The card is ideal for mobile Point of Sale and security ID applications.

FEATURES

- Reads the data from 1, 2 or 3 track magnetic stripes used on ID cards, driver's licenses, credit cards, health cards, and other identity documents
- Two color LED indicates good or bad read
- Compatible devices:
 - Pocket PCs running Windows Mobile 2003, 2003SE, 5.0
 - Notebook or tablet PC running Windows XP or XP Tablet Edition
- Type I CF card with integrated Mag Stripe reader plugs into Type I or Type II CompactFlash card slot
- With CF-to-PC Card adapter, the card works in a PC Card (PCMCIA) slot*
- Supported by the same SocketScan keyboard emulation software and SDK that supports all Socket bar code scanning and RFID products
- SocketScan enables you to assign a beep tone or .WAV file to signify a successful read
- Two year warranty
- No extra batteries or special power adapter required — the CF Mag Stripe Reader Card gets power from the mobile computer
- SDK available to application developers
- Works with Windows-based development tools so you can easily create custom applications

Socket CF Mag Stripe Reader Card 4E

Product# MS5103-661



The Socket CF Mag Stripe Reader Card can read data from a variety of magnetic stripe cards, such as:

- ID cards
- Driver's licenses
- Credit cards or other financial cards
- Health cards
- Voter registration cards
- Membership cards

SPECIFICATIONS

Physical Characteristics:

L x W x H: 2.7 x 2.2 x 1.3 inches
(69 x 55 x 34 mm)

Total Mass: Approx. 1.73 oz (49 g)

Power Consumption (with 3.3 V):

Standby: 7 mA (23.1 mW)

Maximum: 12 mA (39.6 mW)

Environmental Conditions:

Operating Temperature:

+14 to +140°F (-10 to +60°C)

Operating Relative Humidity:

10-90% non-condensing

Operating System Support:

- Windows Mobile 2003, 2003SE, 5.0

- Windows XP, XP Tablet Edition

Interface Standards:

CompactFlash Type I

Baud Rate: 19,200 bps

Mag Stripe Reader Data Structure:

STX, DATA, CR, LF

SocketScan and SDK Data Structure:

DATA

Magnetic Card Format: ISO TK1&2&3

Card Swiping Speed: 3-50 ips

Card Swiping Direction: Bi-directional

Included Software:

- Installation utility

- SocketScan™ with keyboard emulation for Windows Mobile, XP

SocketScan™ Software:

- Reads magnetic stripe data into any Windows application as if it were manually typed
- Lets you add Prefixes and/or Suffixes (e.g., Carriage Return or Tab) to further eliminate manual keystrokes
- Lets you assign a beep tone or .WAV file to signal a good read

Warranty: Two years

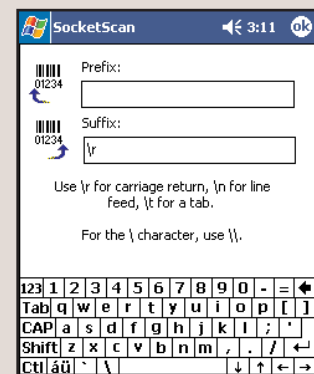
Certification:

FCC: Part 15, Class B

CE: EN55024:1998

SocketScan SDK for Windows available for developers. Please visit:

www.socketcom.com/embedded/socketscan.asp?Status=Developer



SocketScan lets you assign prefix and suffix characters to further eliminate manual keystrokes.

ADDITIONAL PRODUCT INFORMATION

SALES OFFICES :

Corporate Headquarters:

37400 Central Court
Newark, CA 94560
USA

Phone: 510-744-2700

Toll Free (USA): 800-552-3300

Fax: 510-744-2727

Online: www.socketcom.com/contact

Web: www.socketcom.com

To learn about third-party applications for sales force automation, health care, and other vertical markets, please visit:

www.socketcom.com/solutions

