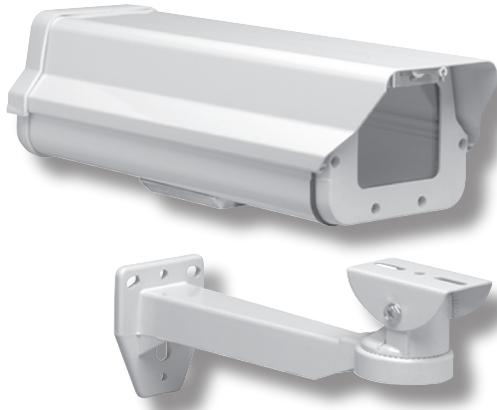


GV-HOUS/HB

INDOOR/OUTDOOR HOUSING WITH MOUNT



SUMMARY

This housing is designed as a medium sized enclosure. It can accommodate all CCD cameras with a length no greater than 9". Constructed of extruded aluminum and equipped with a hinged, latching cover, this housing is well served for general surveillance applications.

Equipped with a removable sled the cameras can be set up, adjusted and then re-mounted in the housing. The front cover hinge makes adjustment and service to the camera very accessible.

FEATURES

- Extruded Aluminum Construction
- Hinged Cover with lock receptacle
- Easy Access with Front Cover Hinge
- Gasket protected cover
- Heater/Blower

SPECIFICATIONS

Viewing Material: Plate Glass 5mm, 0.2"
Construction: Extruded Aluminum
Cable Entry: Gland fitting on bottom of housing
Latch: Located at rear of housing. Accepts padlock for security
Camera Mounting: Removable camera sled
Heater: 24VAC
Fan: 24VAC
Weight: 3.52kg, 7.76lbs
Dimensions: (D) 390mm, 15.35" x (W) 140mm, 5.51" x (H) 115mm, 4.53"
Maximum Camera Size (D) 240mm, 9.45" x (W) 105mm, 4.13" x (H) 80mm, 3.15"
Heater/blower module: 24VAC, less than 10 VA
Heater: On = Less than 15oC /Off = More than 25oC
Maximum current draw: 900 mA
Average current draw: 350 mA
Fan: On = 35oC or more /Off = Less than 25oC
Average current draw: 150 mA
Bracket: GV-Bracket, Metal Bracket for GV-HOUS/HB