

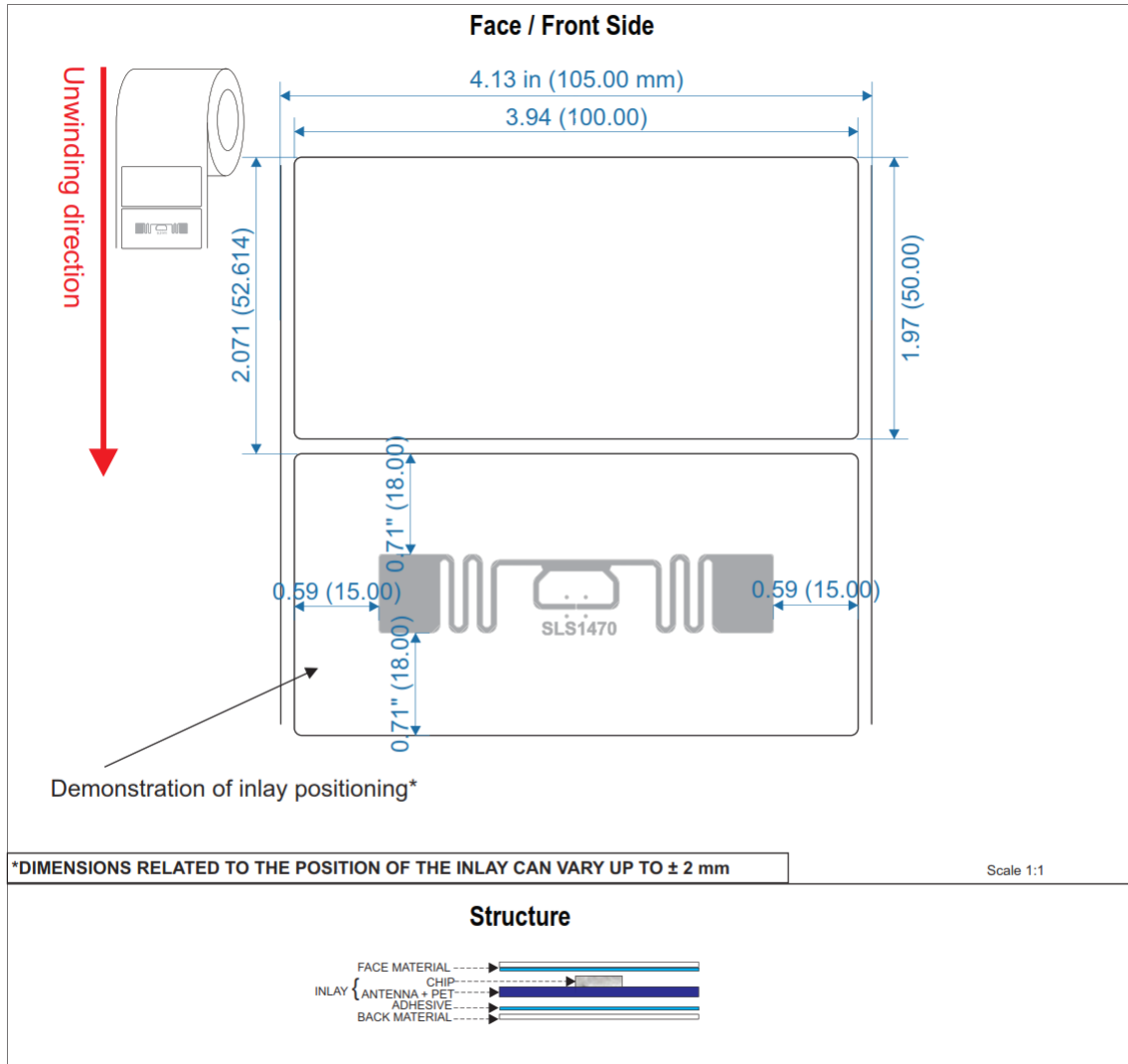
SLS1470

4 x 2 Inch Poly Face Label

The SLS1470 label is designed for global supply chain, industrial, and RTI use cases; it offers excellent performance in demanding environments and on a variety of materials.

SLS1470 inlays and labels have excellent tolerance against the detuning effect of high-electric materials, providing effective global performance even on difficult-to-tag materials. The inlay is size optimized for 10 cm / 4 inch wide converted labels, and is available in dry, wet and paper or polyester label delivery formats.

The SLS1470 inlays use the Impinj Monza R6-P chips with an Autotune feature, which helps the SLS1470 product to work at peak efficiency, even in rapidly changing environments.





Label Specifications

Dimensions	4 x 2 " / 100 x 31.775 mm
Face Material	Polyester (BOPP) - White
Back Material	Liner with acrylic adhesive ADC 1200
Inlay	SLS1470 with Monza R-6P Chip
Inner Core	3 inch / 76.2 mm
Maximum Roll Size (Outer Diameter)	12 inch / 305 mm
Quantity per Roll	~5,000 labels per roll
Frequency Band	902 MHz - 928 MHz (FCC) 865 MHz - 868 MHz (ETSI)
International Standard	EPC Class 1 Gen 2 / ISO 18000-6C
Type	Sticker Label
Chip Info - Memory	Up to 128 bits EPC / 64 bits serialized TID / 64 Bits User
Shelf Life	Minimum 2 years from date of manufacture
Storage Environment	+ 23°C ±3°C / 50% RH ± 5% / 73.4 °F, 50 % RH
Service Environment (Adhesive)	-40 to 90 deg C (when applied between 0 and 26 Deg C).
Ordering Information	SLS Part # 10020365, Includes 14 x 70 mm Inlay on 4x2" White Poly Label with Standard Perm Adhesive, MOQ: 1 Roll