



# CT4-LX-HC

## 4-inch Desktop Printer for Healthcare

### Healthcare Dedicated

- Clinical-ready anti-microbial plastic casing
- Conducive for the use of disinfectant cleansers



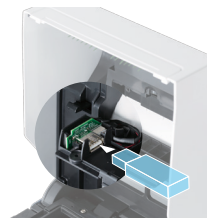
### Expedite Patient Workflows

- Specimen Labels
- Pharmacy Labels
- Bloodbag Labels
- Identification Wristbands



### Efficient & Cost Effective

- On-board printer language emulations
- Auto-clone printer settings  
Backup or duplicate settings on a USB flash drive
- PDF Direct Print  
Print PDF formats directly from the printer, no driver required.



### Functional Design

- One-touch media profile recall  
Register settings of commonly printed label types.
- Label waste prevention  
Print from the first label and eliminate label loss.
- 4.3" full-color touchscreen



# GENERAL SPECIFICATIONS / CT4-LX-HC

## PRODUCT SPECIFICATIONS

<b>Print Resolution</b>		203 dpi	305 dpi
<b>Print Speed</b>		8 ips	6 ips
<b>Print Area</b>	<b>Max Width</b>	4.09" (104mm)	
	<b>Max Length</b>	98.43" (2500mm)	59.06" (1500mm)
<b>Media Size (with liner)</b>	<b>Width</b>	<b>Standard</b>	0.98" - 4.65" (25 - 118mm)
		<b>Continuous</b>	0.39" - 15.74" (10 - 400mm)
	<b>Length</b>	<b>Tear-off</b>	0.98" - 15.74" (25 - 400mm)
		<b>Cutter</b>	0.91" - 15.74" (23 - 400mm)
		<b>Dispenser</b>	0.91" - 15.74" (23 - 400mm)

## PRINTING SPECIFICATIONS

### Method

Thermal Transfer (with Direct Thermal capability)

### Mode

Continuous, Tear-off, Cutter, Dispenser

## MEDIA SPECIFICATIONS

### Sensor Type

Transmissive Sensor for Gap, Reflective Sensor for Black Mark, Paper Out, Ribbon Out

### Media Type

Roll (Continuous, Die-cut), Fan-fold, Tag, Ticket

### Media

#### Thickness (Label & Liner)

0.0031" - 0.075" (0.08 - 0.19mm)

#### Roll Diameter

Maximum: 5.04" (128mm) on 1.5" core

#### Wind

Face-in / Face-out

### Ribbon

#### Length

328' (100m) on 0.5" ID Core

#### Width

1.77" - 4.37" (45 - 111mm)

#### Roll Diameter

1.5" (40mm)

#### Wind

Face-out

### SATO Genuine Consumables

For maximum print quality and optimum use, SATO recommends the use of SATO genuine consumables.

## FONT SPECIFICATIONS

### Internal Fonts

16 Bitmap SATO Fonts, 40 Scalable SATO Fonts, Multi-National Language Support (47 Languages/Unicode), Single and Double Byte Fonts (Korean, Chinese, Japanese)

## CONNECTIVITY

### Standard

USB 2.0 (Type A, Type B), Ethernet (DHCPv4/DHCPv6), NFC

### Optional Interfaces

Wi-Fi and Bluetooth Ver 4.1 (Wi-Fi® and Wi-Fi Direct® Certified IEEE 802.11ac, Dual Band (2.4 GHz, 5 GHz))

## MEMORY & PROCESSING

### Printer Memory

4GB Flash, 1GB RAM

### User Downloadable Fonts, Videos, Graphics or Format

Maximum 1GB

## USER FRIENDLY SUPPORT TOOLS

### Large Status LED

Blue / Red

### Audible Alerts

Adjustable Volume Setting

### Self Diagnosis

Head Check, Stand-by Mode, Cover Open, Test Print, Auto-Calibration, Label End, Ribbon Near-End and End

### Display Panel

4.3" Full Color Resistive Touch Screen

### Tool-Free Maintenance

Print Head and Platen Replacement

### Multi-national Language Support

47 Printable Languages with Scalable Fonts  
31 LCD menu languages

### Operation Videos

Multiple Instructional Videos On-board, Space for Customized Videos

### Emulation

Auto Detect - SBPL®, SEPL®, SZPL®, SDPL®, SIPL® or STCL® (Pre-installed), XML, PDF Direct Printing\*, AEP\*  
\*Contact your SATO Sales Representative for more information/requirements

### Remote Maintenance

SNMP Ver. 3, Web Interfaces, SATO Online Services (SOS), All-In-One Tool (AIOT), SOTI Connect

## OPTIONS

Cutter, Real-Time Clock, Wireless LAN and Bluetooth

## BARCODE SYMBOLOGIES

### Barcodes

#### Linear

Code 39, Code 93, Code 128, CODABAR (NW7), EAN8/13, GS1-Databar™, GS1-128 (UCC/EAN128), Interleaved 2/5, Industrial 2/5, JAN 8/13, Matrix 2/5, MS1, Bookland, Postnet™, UPC-A/E

#### 2D Symologies

PDF417, Micro PDF, Maxi Code, GS1 Data Matrix, QR Code, Micro QR Code and Composite Symologies, Aztec

## OPERATING CHARACTERISTICS

### Electrical Requirements

AC100V ~ AC240V ± 10%, 50/60 Hz (AC adapter)  
Output: DC24V ± 5.0% 2.7A

### Standards & Agency Approvals

Please contact SATO regarding agency approvals in your region.

### Environment

#### Operating

32 - 104°F (0 - 40°C) / 30 - 80% RH (without condensation)

#### Storage

14 - 140°F (-10 - 60°C) / 15 - 90% RH (without condensation)

## PHYSICAL CHARACTERISTICS

### Dimensions

9.37" L x 7.0" W x 8.43" H (238mm x 177.8mm x 214.1mm)

### Weight

7.5 lbs (3.4kg)

### Finishing

Disinfectant-ready and anti-microbial casing

## MISCELLANEOUS

### Functions - Useful Features

Standalone Printing with SATO Application Enabled Printing (AEP), SATO Online Services (SOS), Multiple Interfaces-Auto-Switching, Auto Clone, Status Return, Label Waste Prevention

### Rotation

Auto-label Rotation: 0°, 90°, 180°, 270°

## SATO AMERICA CORPORATE

14125 South Bridge Circle  
Charlotte, NC 28273

Phone: (704) 644-1650

sales-sal@sato-global.com

## LABEL MANUFACTURING, SERVICE & SALES

UNITED STATES MEXICO CENTRAL AMERICA  
CANADA CARIBBEAN

[www.satoamerica.com/CT4-LX-HC](http://www.satoamerica.com/CT4-LX-HC)

©2021 SATO America. All rights Reserved. Rev B • Any unauthorized reproduction of this content, in part or whole, is strictly prohibited • SATO is a registered trademark of SATO Corporation and its subsidiaries in Japan, the U.S. and other countries. All other trademarks are the property of their respective owners.