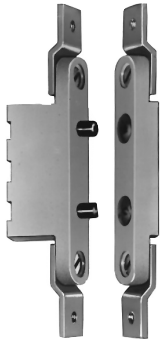


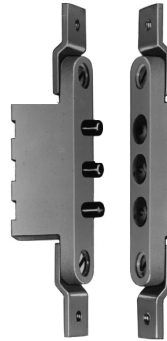


*In or Out...we make it Easy!™*

**USED TO POWER ELECTRIC LOCKS MOUNTED IN THE DOOR.**



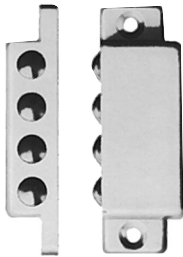
**9500**  
2-Pin Transfer



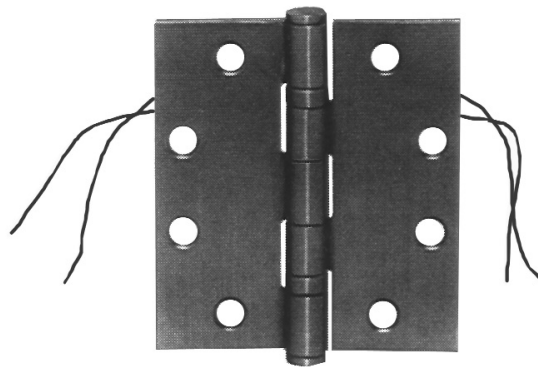
**9501**  
3-Pin Transfer



**9503**  
4-Ball Transfer



**9505**  
4-Ball Transfer



**9520/9521/9522/9523/9524**  
Electrified Hinges

**9512/9513** (Not Shown)  
Bridge Cable



**9507**  
Flex Loops

## Current Transfers Features & Benefits

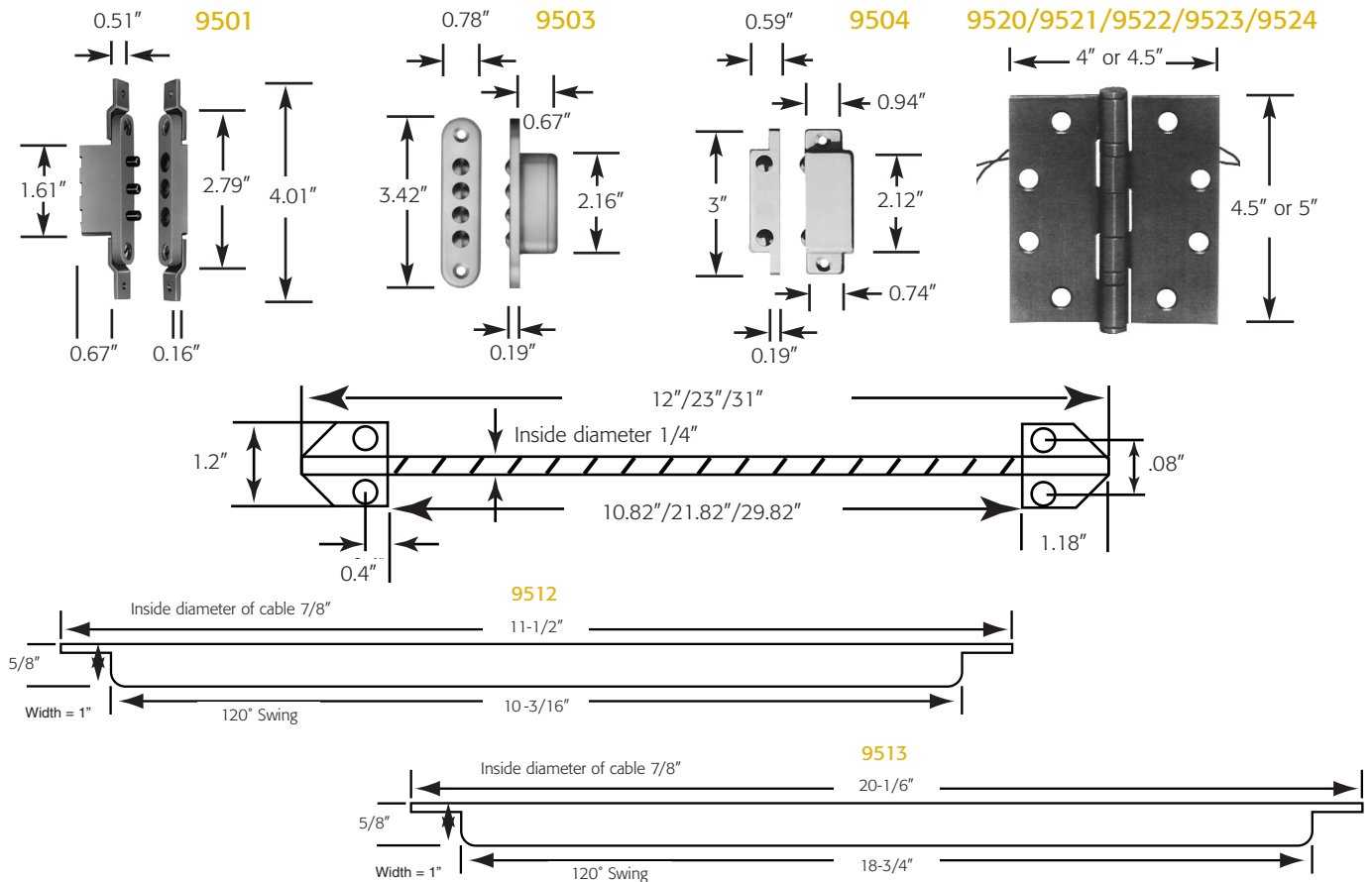
- Pin-style transfers are recessed in the hinge side of the door/frame and concealed when the door is closed for tamper-resistance.
- Ball-style transfers are recessed or surface-mounted on either hinge side, lock side or head frame. Recessed models are concealed when the door is closed for tamper-resistance.
- Flex loops are surface-mounted on hinge side of the door/frame.
- Electrified hinges are fully mortised in the hinge style and concealed when the door is closed for tamper-resistance.
- Bridge cables are recessed in the hinge side of the door/frame and concealed when door is closed for tamper-resistance.



*In or Out...we make it Easy!™*

Model	Mounting	Door Status	Type	Ratings	Material	Finish
9500	Mortise	No – 2-pin contact	Pin	1.5A/24VAC	Nickel-plated Brass on Plastic	White
9501	Mortise	Yes – 3-pin contact	Pin	1.5A/24VAC	Nickel-plated Brass on Plastic	White
9503	Mortise	Yes – 4-ball contact	Ball	0.5A/24VAC	Gold-plated on Plastic	White
9504	Surface	No – 2-ball contact	Ball	0.5A/24VAC	Gold-plated on Plastic	White
9505	Surface	Yes – 4-ball contact	Ball	0.5A/24VAC	Gold-plated on Plastic	White
9507	Surface	No	23" Flex Loop*	4 cond. @ 22 ga. 2 cond. @ 18 ga.	Nickel-plated Brass Plastic	Silver White/Brown
9512/9513	Mortise	No	Bridge Cable	4 cond. @ 22 ga. 2 cond. @ 18 ga.	Steel	Bright Chrome
9520/9521/ 9522/9523/ 9524-2W	Mortise	No	5-Knuckle Ball Bearing (2 wire)	2 cond. @ 20 ga./5A	Steel	Satin Chrome
9520/9521/ 9522/9523/ 9524-4W	Mortise	No	5-Knuckle Ball Bearing (4 wire)	4 cond. @ 28 ga./25A	Steel	Satin Chrome

\*Including end caps **NOTE:** It is recommended that preparation for wires, etc., for all surface-mounted models be done on-site. Conduits supplied by others. Specifications are subject to change without notice.



RCI also offers a complete line of Electromagnetic Locks, Electric Strikes, Power Supplies, Switches, Key pads & Readers, Exit Devices, Systems & Door Hardware.