

Omnii™ XT10

Modular Performance That's Built Around You



Introducing the all-new Omnii™ XT10

We understand that you need products that adapt and change to meet your business needs.

The new Omnii™ platform delivers an adaptable and rugged handheld computing family. Devices built on the Omnii™ platform can be adapted for new technologies or even re-purposed.

Designed specifically for the ultra-tough demands of the supply chain & logistics market, the all-new Omnii™ XT10 was developed based on our decades of SCL leadership coupled with extensive feedback from users and customers.

In fact, it is the most tested, validated, lab abused, customer proven, partner involved, and rugged product we have ever built.

Discover adaptive ingenuity at work.

Omnii™ XT10

Modular Performance That's Built Around You

Adaptive Ingenuity At Work

At Psion Teklogix, adaptive ingenuity defines what we do. We challenge convention, responding to your needs to create and build products that perform better now, and are ready to adapt as your business demands grow.

Our constant drive to think differently has resulted in Open Source Mobility: our revolutionary commitment to modularity, open innovation and customisation. Open Source Mobility, along with our online community, IngenuityWorking.com, provides a whole new approach to product development. We're bringing together customers, developers and partners to collaborate and ensure that we are better positioned to address the real demands of your business.

Together we're pioneering new products, applications and accessories that make the most of the revolutionary Omnii™ platform.



Omnii™ XT10 is designed specifically for the ultra-rugged demands of the supply chain & logistics environments.

In other words, it is built to drive real-world performance. Tough, intelligent and easy to use, it's tested and developed to be exactly what you need it to be.

Omnii™ is the future of industrial mobile computing. It's always fit for purpose. Wherever your tasks take you, Omnii™ can be configured to the right level of ruggedness, useability and price. That's adaptive ingenuity at work.



FEATURES & BENEFITS

Lower Total Cost of Ownership

The Omnii™ XT10 can save you up to 30% on hardware costs over the lifetime of the product by reconfiguring based on the changing needs of your business, versus the costs of replacing your hardware. Compared to any other product on the market, Omnii offers you greater investment protection.

Adaptive By Design

Omnii™ XT10 delivers unrivalled adaptability: one device can be flexibly configured for a wide variety of applications, environments, and people. Because it's built around open standards and a common platform, the Omnii™ XT10 can be enhanced through customisation with partners, and collaborative innovation with customers.

Extreme Versatility & Field Flexibility

Omnii™ XT10 gives you a modular and flexible solution packaged in a versatile product platform. With dozens of options and expansion modules, Omnii™ XT10 supports over ten thousand final configurations.

Future-Proof Technology

With Omnii™ XT10, there's no need for compromise: you can buy what you need today with built-in flexibility for tomorrow's demands. The risk of obsolescence is significantly reduced.

Real-Time Productivity, Reliability, & Durability

Omnii™ XT10 enables you to automate key processes, improve task efficiencies, and access the right information. It is built with the Texas Instruments OMAP3 processor with a superscalar architecture that performs up to two times faster than the competition without sacrificing battery efficiency. Built to withstand tough environments, the IP65 rating resists water and dust and the rugged construction withstands drops from 2.0m (6.5'), the best in the industry.

Superior Battery Management

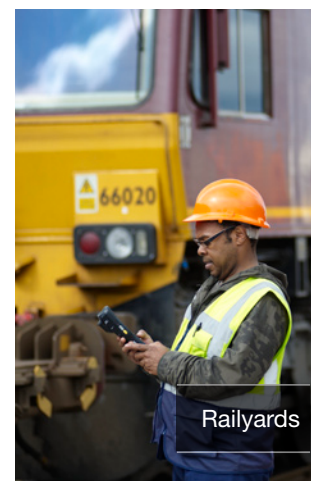
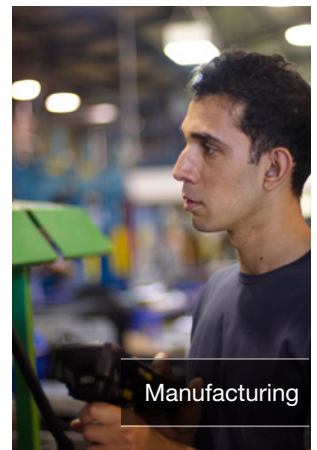
With the most powerful battery in its class (5000 mAh), the Omnii™ XT10 is paired with Psion Battery Grading & Management Tools to monitor battery health. The result, it's highly accurate and it takes the guesswork out of managing batteries.

Keyboard Choices

With multiple field replaceable keyboard choices, the Omnii™ XT10 can be adapted to the needs of your workforce.

PsionVU Shell

Based on Microsoft Silverlight technology, PsionVU allows integrators to incorporate a highly configurable user friendly interface without coding. It allows administrators to lockout all other features, including OS options, while clearly delegating specific functions to the end users.



For more information, please visit psionteklogix.com

Omnii™ XT10

Key Accessories



Desktop Docking Station

The Desktop Docking Station includes dual USB ports, optional serial and Ethernet ports, and a positive lockdown engagement that also charges the device and a spare battery.



GPS Expansion Module

GPS features high performance antennas to give faster time to first fix, and better accuracy in low signal areas. Easily capture the GPS coordinates of a shipping container in the yard using this expansion module.



6-Slot Spare Battery Pack Charger

The 6-Slot Spare Battery Pack Charger allows for six spare batteries to be charged simultaneously. It can be mounted to the wall or sit alone on a desktop. Each slot features individual battery charge level indicators.



Pistol Grip

The Omnii™ XT10 pistol grip is robust, yet easily removable in the field with simple screws, so it's easy to remove or replace.



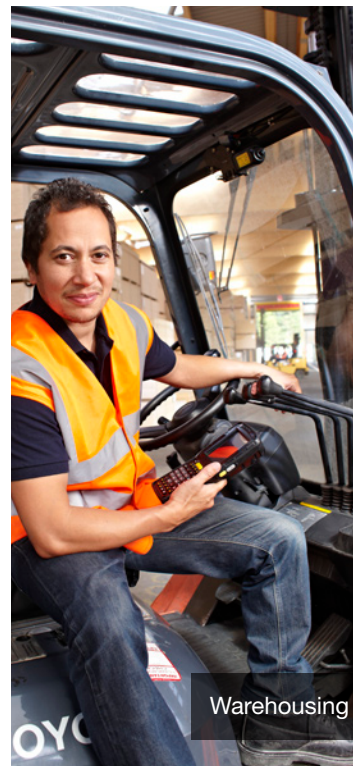
Integrated 1D, 2D or AutoRange Scanners

Five unique solutions to fit almost all applications are available. Ranges from 6" to 50ft. Scan both 1D and 2D bar codes. Omnii™ XT10 integrated scanners feature improved fuzzy logic to enable reading of poor bar code stampings.

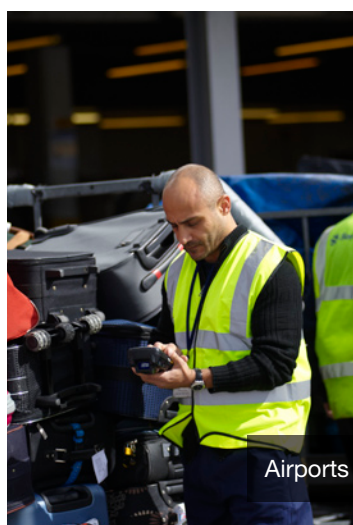


Camera

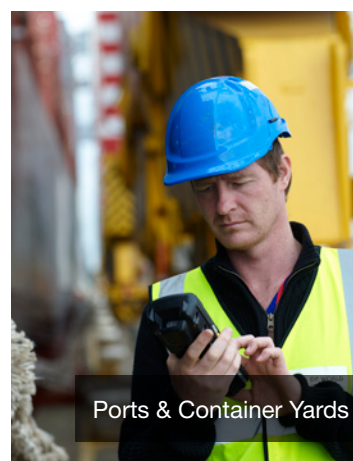
The 3-Mega Pixel Colour Camera features autofocus, manual digital 4X zoom, dual LED flash, and video capability.



Warehousing



Airports



Ports & Container Yards

Omnii™ XT10

Specifications*

Flexibility

- Customer IT or VAR serviceable
- Modular architecture features swappable:
 - Keyboard
 - 1D, 2D & AutoRange Scanners
 - Colour camera
 - Pistol grip
 - GPS expansion module
 - Push-to-talk speaker / microphone

Platform

- Texas Instruments® OMAP3® Processor 600 MHz with super scalar architecture
- 256 MB RAM
- 512 MB Flash ROM

Operating System

- Windows® CE 6.0

Bundled Applications

- Internet Explorer® 6.0
- Windows Mobile Device Center
- Wordpad, ActiveSync

Device Management & Provisioning

- PsionVU
- Mobile Control Centre (MCC)
- Wavelink Avalanche
- Total Recall / TweakIt / Hermes

Supported Applications

- Open TekTerm
- Lockdown Browser
- Naurtech Browser



Wireless Connectivity

- Integrated Bluetooth® V2.0 + EDR
- Integrated 802.11b/g WiFi
- Bluetooth® coexistence
- FIPS 140-2 support
- CCX v4
- Optional SIRF III GPS Receiver



Barcode Scanner Options

- SE1224HP 1D Std Range Laser
- SE1223LR 1D Long Range Laser
- SE1524ER Auto-Range Laser
- EV15 1D Std Range Imager
- 5080 2D Std Range Imager
- Multi-colour LED indicators



Voice & Audio & Feedback

- Walkie-talkie style Push-to-Talk – VoIP over WiFi
- FgPoC
- Integrated microphone & receiver
- High volume 95dBA beeper
- Optional Push-to-talk speaker
- Vibration feedback

Display

- 3.7" VGA (640 x 480) Transflective Color Display with 2 Touchscreen options:
 - High Visibility option, offers superior visibility with 165 cd/m² brightness.
 - Extreme Duty option, designed for rugged environments with improved impact resistance (1.25 Joule impact), better abrasion resistance, superior low temperature operation (to -20C), with 160 cd/m² brightness.

Keyboard

Full Alpha Numeric



Numeric



Numeric Alpha Modified



- High reliability keypad ultra-white backlight

Expansion Ports

- Micro SD slot for FLASH expansion
- Multiple Internal Multi-Function Expansion Interfaces with:
 - RS232 serial
 - USB host
 - GPIO

Camera (Optional)

- Colour, 3 Mega pixel, autofocus, manual digital 4X zoom, Dual LED flash, video capable

GPS (Optional)

- Features high performance antenna

Power Management

- 5000 mAh high capacity, SMART battery

Environmental

- Operating temp: -20°C to +50°C
- Storage temp: -40°C to +60°C
- Humidity: 5% to 95% non-condensing
- Rain/Dust: IP65, IEC 60529
- Drop rating: 1.7m (5.6 ft), 26 drops to polished concrete (powered with options & accessories), multiple 2.0m (6.5 ft) drops to polished concrete
- ESD: +/- 8kV contact, +/- 15kV air discharge

Ergonomics, Dimensions & Weight

- Overall: 230mm L x 100mm W x 42mm D
- At keypad: 75mm W x 32 mm D
- Weight: 760g including EV15 imager, high impact display, and battery pack



Charging Accessories

- Optional desktop docking station configurations:
 - USB host and device
 - USB host and device, Ethernet and RS232
- Quad Docking Station (with 100BaseT Ethernet – daisy chainable)
- Active Sync (USB) Snap Module with USB trickle charging
- Vehicle Power Outlet Adapter
- 6 unit gang charger for batteries

Vehicle Cradle Accessories

- Base un-powered cradle (one hand latch & release)
- 12 - 24VDC powered cradle with Communication Module
 - A variety of adapter cables available (Example: One DE9 RS232 Serial, Two USB 1.1 host)
- Pre-regulator module (for 24 to 72V forklift trucks)
- Cradle Shock and Vibration: IEC Classification 5M2.
- IP rating: IP65

Carrying Accessories

- Optional bolt-on Pistol Grip
- Forklift Holster
- Hand strap, wrist strap, hard and soft shell holsters, protective carrying cases

Regulatory Approvals

- Worldwide Safety, EMC, RF, Laser approvals
- CE Mark
- E Mark (vehicle cradles)
- RoHS compliant
- GSA schedule compliant (TAA)
- WEEE compliant
- REACH comp

A complete list of accessories is available at: psionteklogix.com



Product is ROHS Compliant.

* Note this product will carry the CE Mark.
* Specifications are subject to change without notice.

For more information, please visit psionteklogix.com

© Psion Teklogix Inc. Psion, Teklogix, Psion Teklogix, Omnii, Ikôn, Neo, Workabout Pro, and Return on Mobility are registered trademarks or trademarks of Psion PLC, Psion Teklogix Inc., or their subsidiaries. Other products mentioned in this document may be trademarks of Psion Teklogix Inc. or trademarks or registered trademarks of other software, hardware or service providers and are used herein for identification purposes only. Windows and the Windows logo are trademarks or registered trademarks of Microsoft Corporation in the United States and/or other countries. NA0709

