

Care.

Trust.

Responsibility.



PT-8800

Point of Sale Terminal

Features At-A-Glance

Heavy Duty Construction

15" Touch Screen (Dual Screen Option)

Rear Customer Display

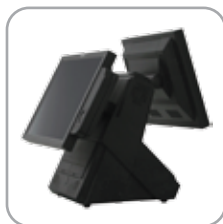
IC Card Reader/Compact Flash/USB 2.0



Specifications

Item	PT-8800
Processor	Celeron 2.0 GHz up to Intel Pentium IV 2.6Ghz
System Memory	512M DDR 400/533 Mhz supported up to 2GB
LCD	15" or 17" Active TFT color LCD
Resolution	1024 x 768
Brightness	350 nit
Viewing Angle	20° ~ 45° tilt
Touch Screen	ELO 5-wire resistive (optional capacitive)
Network	Ethernet 10/100/1000
Storage	80G hard drive
Expansion Options	<ul style="list-style-type: none"> • 2nd 80G hard drive • 1 PCI slot • Compact flash card socket, IDE interface
Power Supply	220W power supply
Card Reader	Dual track magnetic card reader (MSR)
Speaker	2 * 3 Watt speakers
I/O Ports	<ul style="list-style-type: none"> • 4 * D-sub 9 RS232 ports provide +5V/12V through jumper free BIOS setting • 1 * Parallel port • 1 PS/2 KB • 1 PS/2 mouse • 2 * USB 2.0 ports in front • 2 * powered USB ports in rear • 1 * DB-15 VGA port • 1 * RJ 45 LAN port • 1 * RJ11 24V DC cash drawer port supports 2 cash drawers • 2 * Audio ports (1 line out, 1 MIC in)
Operating System	Win98/2000/ME/XP/WPe/WEPOS/Linux
Peripherals	<ul style="list-style-type: none"> • 3 track magnetic card reader (MSR) • 20 x 2 VFD customer display • Secondary 15" TFT LCD with or without touch • USB interface smart card • Finger print reader
Operating Temperature	32° F ~ 104° F
Storage Temperature	-4° F ~ 140° F
Dimensions	13.5" (W) x 13.7" (D) x 17.1" (H)

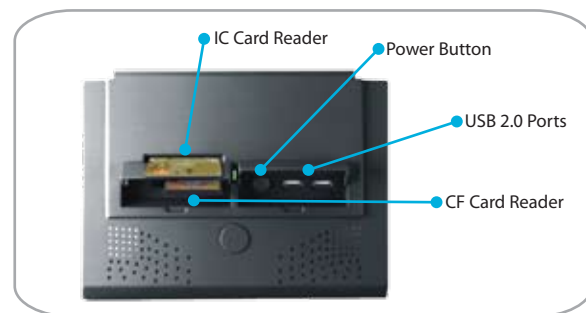
Features In Detail



Dual Display



Dual Side View



Front Panel Detail



www.partnertechcorp.com

Partner Tech USA • 51 Parker • Irvine • CA • 92618 • Tel: (949) 598-1888 • Fax: (949) 598-0088

© 2010 Partner Tech USA. All rights reserved.
 Reproduction in whole or in part without written permission is prohibited. Features and specifications are subject to change without notice. All weights and measurements are approximate.