

Panasonic
ideas for life

Weather Proof & Vandal Resistant
Color Dome Camera
with Low-Light B/W Mode

WV-CW864A



*24-hour outdoor surveillance
with a single unit.*



SDII^{T.M}
Super Dynamic



Introducing a powerful all-in-one dome camera-designed for outdoor installations.

The integrated housing design is perfect for all weather outdoor use. It features color camera with a 22x zoom lens, high-speed panning table, our exclusive Super Dynamic II technology and day/night operation, crisp clear images with 510 lines of resolution, Pix sens up function delivers black-and-white images in as little as 0.03 lux (0.003 fc) of light conditions.

The Panasonic weather proof color dome camera; WV-CW864A is ideal for a variety of applications including outdoor parking lots, theme parks, shopping malls, airports, train stations and highways.

For all-weather outdoor use

Resistant to rain.

The WV-CW864A model meets the IP66 international standard. The camera can be installed under building eaves, external walls, rooftops and many other locations.



Resistant to temperature changes.

A fan and heater are incorporated in the housing providing an operating temperature range of -30°C to +50°C (-22°F to +122°F).

Resistant to direct sunlight.

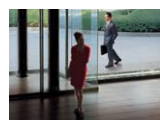
The optional Sun Shield WV-7176 is available for locations exposed to direct sunlight.

Super Dynamic II Function

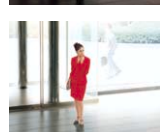
With Super Dynamic II, backlighting is no problem

With a 64 times dynamic range, Panasonic's proprietary Super Dynamic II processing yields clear images even in high-contrast or backlit lighting situations.

Set the lens aperture to the bright section, and the dark section is invisible.



Set the lens aperture to the dark section, and the bright section is invisible.



Digital signal technology allows images with high contrast to be seen on screen.

SDII
Super Dynamic II



24-hour Surveillance



Automatic selection of color or B/W modes enables surveillance at night.

When darkness falls, the camera automatically switches from color mode to B/W mode, increasing sensitivity. Color mode is automatically restored when daylight arrives, ensuring perfect surveillance for both day and night. The mode selection can be set to either automatic or manual operation.

Day (Color mode)



Night (B/W mode) at low-light condition



Day/Night switching

Minimum illumination is 0.03 lux (0.003 fc) at B/W imaging.

with Pix Sens Up, Sens Up Off (AGC High)

The minimum illumination needed is 1 lux (0.1 fc) for color mode and 0.03 lux (0.003 fc) for B/W mode. A clear surveillance image is assured even under poor lighting conditions.

Powerful specifications ensure high reliability.

High-speed panning at 300 degrees/sec.

The maximum panning speed of 300 degrees/sec quickly captures an object. The range of surveillance is 360 degrees in the horizontal direction (endless panning) and 190 degrees in the vertical direction (one-motion panning).



Return to Pan Function.

Returns back to auto pan after manual pan is completed.

Maximum 64 preset positions.

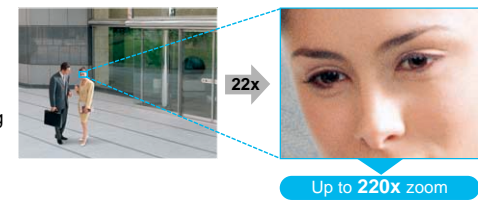
A press of a key on the controller enables the selection of preset positions.

The image hold function eliminates screen blurring.

The image immediately before the position selection is stored and displayed until the selection of preset positions has been completed. The screen blurring that occurs with conventional cameras during panning is eliminated, ensuring clear, well-defined images during monitoring.

220x Zoom magnification.

The combined use of a 22x optical zoom lens and the 10x electronic zooming function provides a maximum magnification of 220x.



Alarm Inputs and Outputs enable the control of external devices.

The output connector features 4 alarm inputs and 2 alarm outputs. Each alarm signal can operate under preset positions and zooming functions. External devices, such as a digital disk recorder and a VCR, can also be controlled for recording.

Ready for use with a single coaxial cable and RS-485.

Video image signals, control data, synchronization signals (VD2), and alarm signals can be transmitted with one coaxial cable. The cable can be extended up to 900 m (3,000 feet). In addition, RS-485 data communication is also possible, enabling use over extended distances and for the expansion of system devices.

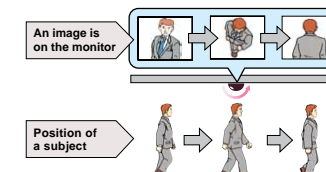
Versatile functions designed for user-friendliness.

Horizontal resolution of 510 lines (High) for color imaging.

The employment of a 768 (H) x 494 (V) mm, 1/4-type CCD enables high picture quality with extended specifications.

Digital Flip Function.

The top and the bottom of the image can be reversed through digital processing when the camera pans 135 degrees in the vertical direction. Since the camera continues to pan to 185 degrees, an object passing directly under the camera can be tracked continuously.



Privacy Zone Masking Function.

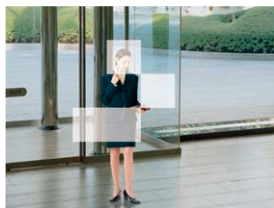
Any portion of the surveillance image can be masked on the screen, preventing any infringement of privacy.

Eight (8) Privacy Zones can be masked



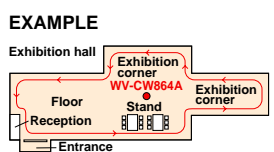
Motion Detector Function.

The motion detector output sends alarm signals to external devices when movement is detected within a surveillance area. Connections to a recording system (VCR, DVR), are also possible.



Patrol Learn Function Stores/ Reproduces Manual Operations.

Camera operations, such as panning or zooming, that were once manually performed can be reproduced at the flip of a switch.

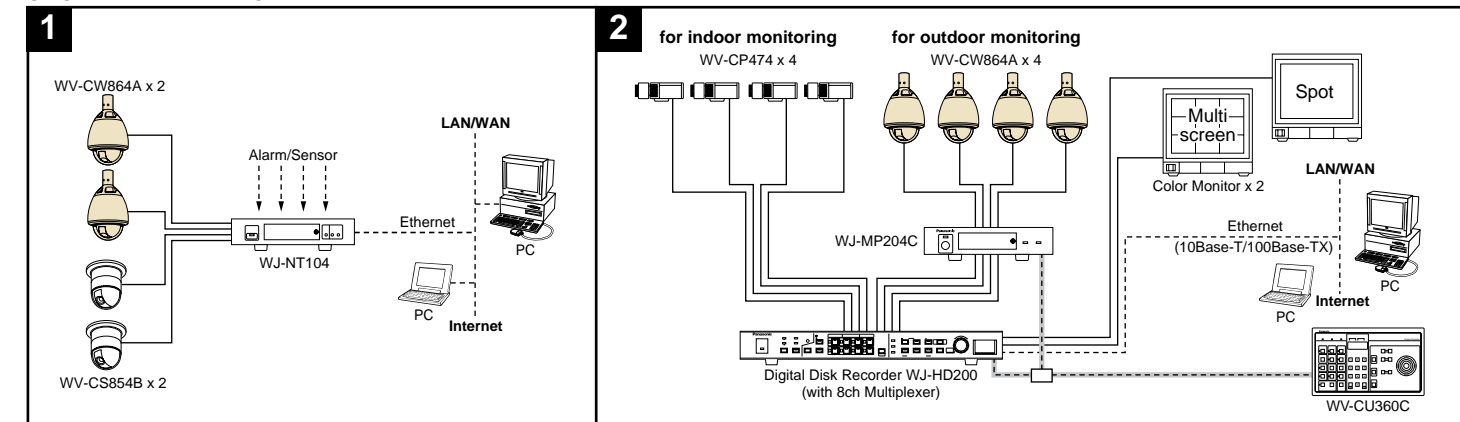


Camera IDs can be displayed using characters.

Up to 16 characters and symbols can be displayed on the monitor.



SYSTEM EXAMPLES



OPTIONAL COMPONENTS

Digital Disk Recorder

Digital Disk Recorder
with 8ch Multiplexer
WJ-HD200
PS•Data



Color Multiplexers

Digital Video Duplex Color Multiplexers
WJ-FS416 (16ch)
PS•Data

WJ-FS409 (9ch)
PS•Data



Quad Unit

Color Quad Unit
WJ-MS424



Surveillance Control Systems

SYSTEM850



SYSTEM500



SYSTEM150



Data Multiplex Unit
WJ-MP204C
PS•Data



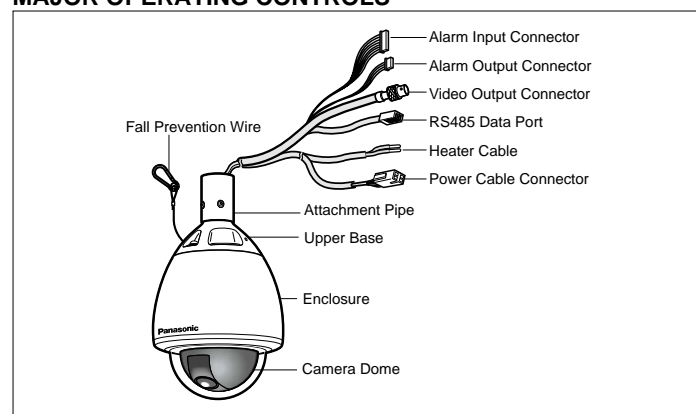
System Controller
WV-CU360C
PS•Data



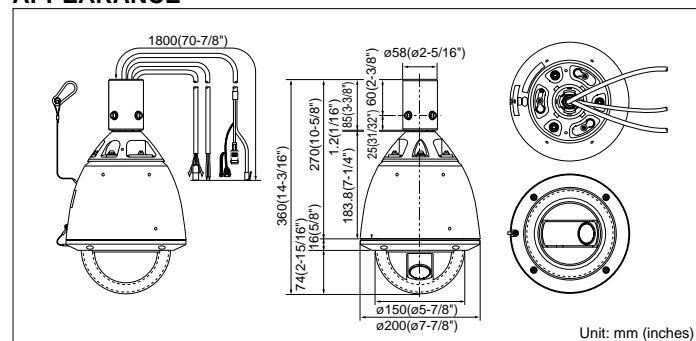
SPECIFICATIONS

Model No.	WV-CW864A
Effective Pixels	768 (H) x 494 (V)
Scanning Area	3.65 mm (H) x 2.74 mm (V), 1/4-type CCD
Synchronization	Internal/Line-lock/Multiplexed Vertical Drive (VD2)
Horizontal Scanning Frequency	15.734 kHz
Vertical Scanning Frequency	59.94 Hz
Video Output	1.0 V[p-p] NTSC composite/75 Ω
Horizontal Resolution	510 lines at color (High), 480 lines at color (Normal), 570 lines at B/W mode
Vertical Resolution	more than 350 lines at center
Signal-to-Noise Ratio	50 dB (AGC Off, weight On)
Minimum Illumination	1 lux (0.1 fc) Color imaging at SENS UP OFF (AGC HIGH) 0.06 lux (0.006 fc) with Pix SENS UP OFF, B/W imaging, SENS UP OFF (AGC HIGH) 0.03 lux (0.003 fc) with Pix SENS UP, B/W imaging at SENS UP OFF (AGC HIGH)
Zoom Speed	approx. 4.5 s (Tele/Wide) in manual mode
Focus Speed	approx. 5.0 s (Far/Near) in manual mode
Iris	automatic (open/close is possible)/manual
Maximum Aperture Ratio	1 : 1.6 (Wide) - 3.0 (Tele)
Focal Length	3.79 - 83.4 mm
Angular Field of View	H 2.6° - 52.3° V 2.0° - 39.9°
Electronic Shutter	1/60 (Off), 1/100, 1/250, 1/500, 1/1,000, 1/2,000, 1/4,000, 1/10,000 s
AGC Control	On (Low)/On (Mid)/On (High)/Off
Sensitivity	max. 32 times, Auto/Fix
Super Dynamic II	selectable (On/Off)
Zoom Ratio	x22 plus digital zoom x10
Iris Range	F1.6 - 22, close
Auto Focus	Manual/Auto
Auto Mode	Off/Seq/Sort/Auto Pan/Patrol
Auto Pan Key	Seq/Sort/Auto Pan/Patrol Play
Digital Flip	On/Off
Camera ID	preset ID, camera ID, area title : up to 16 characters
Motion Detector	On/Off
Alarm In	4 inputs (Alarm IN 1-4)
Alarm Out	2 outputs (Alarm/Aux1, B/W/Aux2)
B/W Mode	Auto/On/Off
Privacy Zone	On/Off, up to 8 zones
Proportional Pan/Tilt	On/Off
Patrol Learn	Learn/Play/Stop, up to 30 seconds
Cleaning	On/Off
Imaging Hold	On/Off
Panning Range	360° endless
Panning Angle Setting	possible (in auto-pan mode)
Panning Mode	manual/sequential position/sort position/auto pan
Panning Speed	manual : approx. 0.1°/s - 120°/s 8-steps/64-steps sequence position : maximum approx. 300°/s
Tilting Range	-5° to 185°
Tilting Mode	manual/sequential position/sort position
Tilting Speed	manual : approx. 0.1°/s - 120°/s 8-steps/64-steps sequential position : maximum approx. 300°/s
Power Source	24 V AC, 60 Hz
Power Consumption	Camera 18 W Heater 41 W
Ambient Operating Temperature	-30°C ~ +50°C (-22°F ~ +122°F) (at continuous operation mode)
Dimensions	ø200 (D) x 360 (H) mm [ø7-7/8" (D) x 14-3/16" (H)]
Weight	approx. 5 kg (11 lbs.)

MAJOR OPERATING CONTROLS



APPEARANCE



OPTIONAL ACCESSORY

Sun shield
WV-7176

The sun shield; WV-7176 screens the outdoor type color camera WV-CW864A, from the direct sunlight.



SPECIFICATIONS

Dimensions	ø230(W) x 194(H) mm [ø9-1/16"(W) x 7-5/8"(H)]
Weight(approx.)	450 g (0.99 lbs.)

• All TV pictures are simulated. • Weights and dimensions are approximate. • Specifications are subject to change without notice. • These products may be subject to export control regulations.

Panasonic

Panasonic Digital Communications & Security Company

Unit of Matsushita Electric Corporation of America

Security Systems Group

<http://www.panasonic.com/cctv>

Executive Office : Three Panasonic Way 2H-2, Secaucus, New Jersey 07094

Zone Office

Eastern : Three Panasonic Way, Secaucus, New Jersey 07094 (201) 348-7303

Central : 1707 N.Randal Road, Elgin, IL 60123 (847) 468-5205

Western : 6550 Katella Ave., Cypress, CA 90630 (714) 373-7840

DISTRIBUTED BY:

PANASONIC CANADA INC.

5770 Ambler Drive, Mississauga, Ontario, L4W 2T3 Canada (905) 624-5010

PANASONIC SALES COMPANY

DIVISION OF MATSUSHITA ELECTRIC OF PUERTO RICO, INC.

San Gabriel Industrial Park 65th Infantry Ave. KM. 9.5 Carolina, P.R. 00985 (809) 750-4300

Printed in Japan

WV-JHCW864AC(2P-495E)