

1D LASER

# OPN 2002

Pocket Memory Scanner with Bluetooth



The OPN 2002 Bluetooth memory scanner combines convenient barcode data collection with flexible communication options. The device allows storage and removal of barcode scans. The final collection can be transmitted by cabled or wireless interface.

## Product Features

### Bluetooth & USB communication interface

For data transmission to a Bluetooth hosting device, two profiles are available on the OPN 2002. The SPP profile allows the user to use a data loading tool and configure Bluetooth transmission settings. For direct transmission without using any tools the HID profile will fit the immediate wireless transfer to any USB device.

### Scanning control by two buttons

Using this high performance laser scanner is very easy - scan a barcode and it will be stored automatically. When you make a mistake, the lower button allows you to re-scan the barcode in order to remove the item from the memory.

### Ample storage

Over 20,000 barcodes can be stored and removed into the 1MB of memory by the user at any time.

### Lightweight

Large application flexibility is provided in this lightweight device of less than 30 grams (1 ounce).

Cabled

**Mobile**

Stationary

OEM

**OPTICON**  
always scanning for new ID's

# Specifications: OPN 2002 Pocket Memory Scanner with Bluetooth

## Electrical specifications

Main battery pack: Lithium-ion polymer rechargeable (240 mAh)

Main battery operating time: Over 7 hours

Charging method: The main battery in the scanner will be charged through the 10-bay cradle or USB cable.

## Optical specifications

Light source: 650 nm visible laser diode

Scan method: vibrating mirror

Scan rate: 100 scans/sec

Decode rate: 100 decodes/sec

Reading pitch angle: -35 to 0°, 0 to +35°

Reading skew angle: -50 to -8°, +8 to +50°

Reading tilt angle: -20° to 0°, 0 to +20°

Curvature: R > 15 mm (EAN8), R > 20 mm (EAN13)

Min. PCS value: 0.45

Depth of field at PCS 0.9, UPC:

60 - 570 mm / 2.36 - 22.44 in (res. 1.00 mm / 39mil),

40 - 360 mm / 1.57 - 14.17 in (res. 0.5 mm / 20 mil),

40 - 220 mm / 1.57 - 8.66 in (res. 0.25 mm / 10 mil),

40 - 120 mm / 1.57 - 4.72 in (res. 0.15 mm / 6 mil),

50 - 100 mm / 2.36 - 3.94 in (res. 0.127 mm / 5 mil)

## Communication specifications

Interface USB: ver. 1.1, VCP

Interface Bluetooth: ver. 1.2

Output power level: Class 2

Profile: SPP, HID

Operation range: 10 m

Connection mode: 1 to 1

Operation mode: master

Security mode: authentication, encryption

## Identification

Supported barcode symbologies (1D): JAN/UPC/EAN/ (WPC) incl. add on, Chinese Post, Codabar/NW-7, Code 11, Code 39, Code 93, Code 128, IATA, Industrial 2 of 5, Interleaved 2 of 5, ISBN-ISMN-ISSN, Korean Postal Authority code, Matrix 2 of 5, MSI/Plessey, RSS, S-Code, Telepen, Tri-Optic

## Functionality

FlashROM: 1MB

Memory RAM: 1 MB

Microprocessor: 32 bits

Real time clock: Quartz RTC, time and date programmable, leap year handling, (accuracy +/- 60 sec./month)

Keyboard: 1 scan button, 1 function key

## Environmental Specifications

Operating temperature: 0 to 50 °C / 32 to 122 °F

Storage temperature: -20 to 60 °C / -4 to 140 °F

Operating humidity: 20 - 85 % (non-condensing)

Storage humidity: 20 - 85 % (non-condensing)

Ambient light immunity: 3,000 lx (fluorescent)  
3,000 lx (incandescent)  
50,000 lx (sunlight)

Protection against dust and moisture, according to IEC529: IP 42

## Physical Specifications

Dimensions: 32 x 62 x 16 mm / 1.26 x 2.44 x 0.63 in

Weight body: 29 g / 1.0 oz

## Regulatory

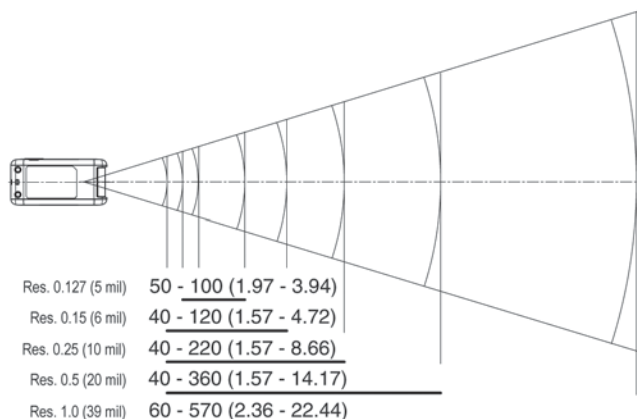
Laser safety class: JIS-C-6802 Class 2, IEC 60825-1 Class 2, FDA CDRH Class II

Product Compliance: CE, FCC, VCCI, RoHS

## Depth of field

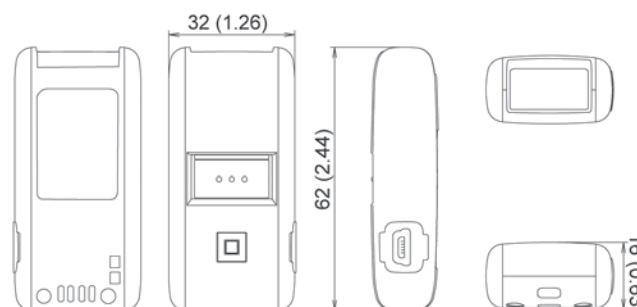
The reading width is a calculated value and is for guidance only.

Unit: mm (in)



## Dimensions

Unit: mm (in)



© Copyright Opticon. All rights reserved. This information is subject to change without prior notice.

Version:

- **USA:** Orangeburg, NY - Renton, WA  
- **Japan:** Warabi City  
- **The Netherlands:** Hoofddorp  
- **France:** ISSY Les Moulineaux CEDEX  
- **Germany:** Dietzenbach  
- **Italy:** Castel Maggiore (BO)  
- **Spain:** Valencia  
- **Sweden:** Järfälla  
- **United Kingdom:** Luton, Bedfordshire

- **Taiwan:** Taipei  
- **P.R.China:** Shanghai  
- **Australia:** Kariiong

Opticon, Inc.  
8 Olympic Drive  
Orangeburg, NY 10962-2511  
USA  
Toll free: 800-636-0090  
Local: 845-365-0090  
Fax: 845-365-1251  
Email: sales@opticonUSA.com  
Internet: www.opticonUSA.com

www.opticonUSA.com  
**OPTICON**  
always scanning for new ID's