



# One window...

# endless labels

## label**five**

## label printing software

**LabelFive** is a label printing software developed to increase productivity and optimize time and effort with easy and fast operations.

Designed to offer high level solutions for any label printing need, it integrates Internal drivers for fast printing and error control, RFID encoding for the latest technological requirements, and all the database features needed to high level production.

### Applications:

Use LabelFive to print labels for:

- Product illustrations
  - Retail Products
  - Pharmaceutical equipment
- European Standard Products requirement tags
- Telecommunications equipment
  - Postal services
- Grocery and Department Stores
  - Air Cargo
  - Mailings
- Packing and Shipping
  - Small Packages
  - Blood Banks
- Library Books and ware house stock management
  - Etc...

### Total environment integration

Label design and database applications are presented in a fully integrated environment, providing a final result of each operation in real time with higher optimization and no need for preview operations.

Take full advantage of the integrated environment by saving time and optimizing production without work limitations in future labeling needs.

### Database connections and features

Create your internal database or connect to any database type through ODBC and get total database access without import or export operations. Use all the database functionalities available for a maximum connectivity and data control management.

### Direct Printing for astonishing speed and full control

Print using Windows driver, or take advantage of all DCL's (Direct Command Language) integrated on LabelFive, to get faster printing sessions and enhanced control over errors.

LabelFive DCL's are internal drivers, the available list includes more than 80 of the most popular label printers on the market.

### Higher level resources

Take advantage of full system capabilities using all the features available for label production. Use one of the 20 barcode types provided or PDF-417. Optimize your database resources using all database tools and encode your labels with RFID technology, preparing it for the latest technological challenges.



#### Direct Print

Print via DCL (Direct Command Language) or via Windows driver



#### RFID Encoding

Encode RFID to TI Tag, Philips I-Code, IT Pico Tag, Philips ISO 15 693, TI ISO 15693



#### Database Connectivity

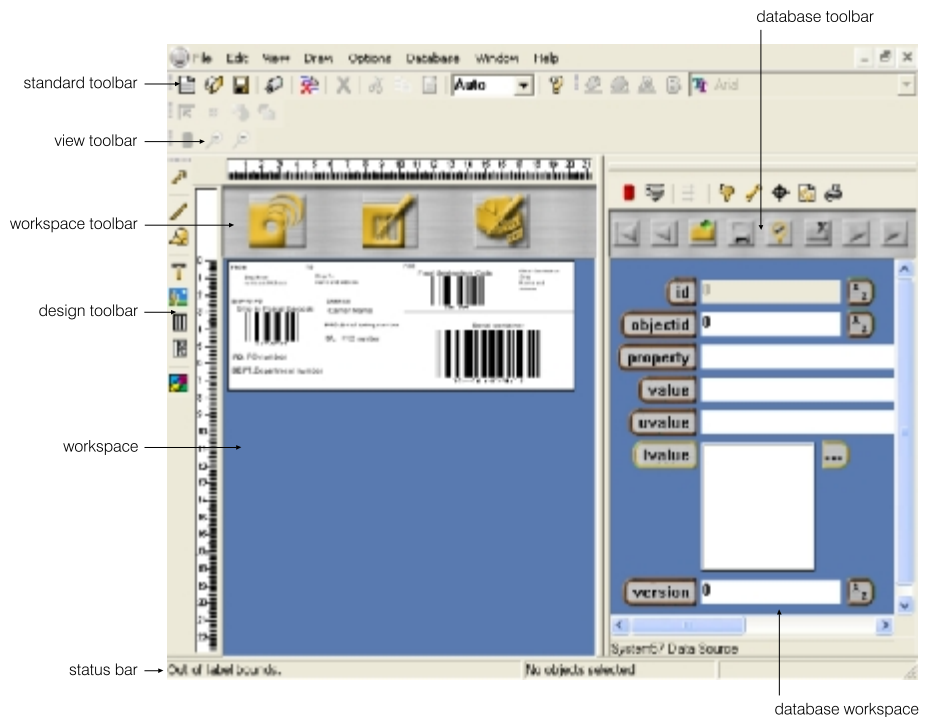
Use ODBC drivers for maximum connectivity



#### Barcodes & PDF 417 2D

Major barcodes styles, rotate, align, check digits, human readable and transparent background.

# LabelFive interface - Total integration



## Standard Features

**Setup Programs on CD** - with Multi-language installation version in English, French, Portuguese, Italian and Spanish  
**KeyFive Protection (SmartCard)** - with serial or USB interface (default)  
**Manual** - available in digital format and printed in one selected language  
**Free Updates** - Updates available FREE of charge at [www.nfive.com](http://www.nfive.com)  
**WYSIWYG** Multi Document Interface - No need to preview operation

### Database

**Internal Database** - Create your own database without the need of external applications  
**External Database** - ODBC database connection for maximum connectivity and no import or export operations (Access, Paradox, FoxPro, Excel, SQL, Oracle, AS/400, etc...)  
**Database view** - Change the columns sequence on the display, hide confidential data field, change column order  
**Database query** - Filter records of database, save applied queries with the label layout, find a record in seconds.  
**Find Functions** - Locate specific records quickly  
**Browse** - browse and record views

### Barcodes and objects

**Barcodes & PDF 417 2D** - Major barcodes styles, rotate, align, check digits, human readable and transparent background. Encode photos in PDF 417 two-dimensional barcode  
**Variable Sources** - Use variables with text, image, barcode and PDF - symbol object, system resource variables like date and time, global counter and print time, ODBC and SQL data sources, recursive concatenation of all variables.  
**Object Protection** - Activate protection and turn objects previously marked not selectable.

### Printing

**DCL's & Windows Driver Printing** - Direct Command Language to major printers on the market. Get maximum speed and error control or print to any printer by Windows Driver  
**Autoprint** - Automatically print labels by adding records

### Miscellaneous

**Text** - Use of all windows fonts, text rotations alignments and auto stretch.  
**Shapes** - Lines, rectangles, and ellipse, filled or unfilled  
**Clipart browser** - Visual file system for an easier and more intuitive image file management  
**Windows & Private Clipboard** - Open or paste items from LabelFive or Windows Clipboard  
**Import Image from File** - BMP, TIF, TGA, PCX, JPG, WMF or from Clipart gallery picture  
**OLE Objects & Photo on a Database Record** - Add photos to database records  
**Compressed photo image** - Compression to reduce database size  
**Build-in Image Tools** - Adjust and control image properties  
**Twain image acquisition interface** - Scanner, digital camera or any Twain device to acquire photos  
**Direct show/video for windows image acquisition** - Direct show supported. Real time video.

## Editions (Upgrades available by RLL technology)

|  |          |      |
|--|----------|------|
| RFID Encoding - Encode RFID to TI Tag, Philips I-Code, IT Pico Tag, Philips ISO 15 693, TI ISO 15693 | Standard | RFID |
|  |          | ✓    |

For more information contact our sales department:

**nfive**

Portugal (HQ)  
 Phone: +351 261 860 450  
 Fax: +351 261 865 647  
 E-Mail: [Sales@nfive.com](mailto:Sales@nfive.com)

USA  
 Phone: +1 805 522 99 06  
 Fax: +1 805 577 96 72  
 E-Mail: [info.usa@nfive.com](mailto:info.usa@nfive.com)

Italy  
 Phone: +39 051 617 8229  
 Fax: +39 051 618 3541  
 E-Mail: [info.it@nfive.com](mailto:info.it@nfive.com)

Singapore  
 Phone: +65 6238 1378  
 Fax: +65 6238 0768  
 E-Mail: [info.sg@nfive.com](mailto:info.sg@nfive.com)

[www.nfive.com](http://www.nfive.com)