

Four Common Pharmaceutical Packaging Applications with Visionscape® I-PAK®

The Visionscape I-PAK inspection system is the proven solution chosen by major pharmaceutical manufacturers worldwide. Based on a selection of powerful machine vision tools and a simple user interface, I-PAK meets demanding pharmaceutical industry requirements, such as 21 CFR Part 11, for reliable, accurate and validated inspection of labels and products.

Common applications include: date/lot code verification, component ID verification and product serialization, product inspection, bright stock identification, as well as a variety of other package, label or product inspections.



Multiple I-PAK configurations available

1 Date/Lot Code Verification

Uses Optical Character Verification (OCV) to ensure:

- Correctness
- Contrast
- Print Quality
- Sharpness

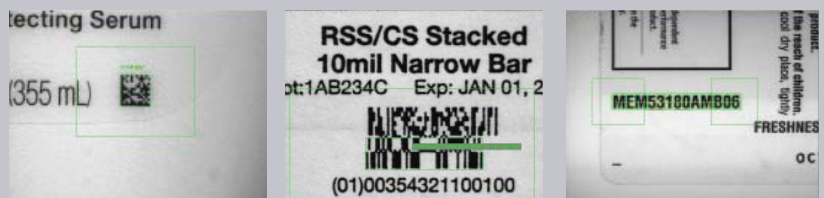


Date/Lot code examples: hot stamped, ink jet, laser marked, plus multiple inspection performed in one system

2 Component ID Verification & Product Serialization

Uses 1D/2D codes or human readable codes for product serialization or to verify component correctness on:

- Primary labels
- Inserts
- Cartons
- Outserts



Component ID examples: 1D barcode, Data Matrix, GS1 Databar (RSS), pre-printed ID number, which have been printed or marked on labels, packaging or directly on products

Four Common Pharmaceutical Packaging Applications with Visionscape® I-PAK®

3 Product Inspection

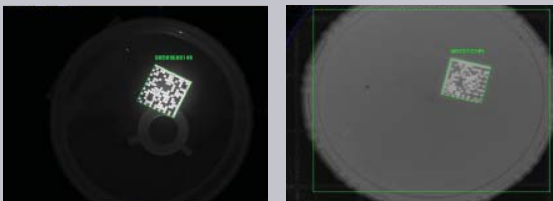


- Label presence/position
- Cap presence/position
- Fill level
- Crimp inspection
- Safety seal inspection
- Insert presence inspection
- Other inspections



Inspection examples: label presence and skew, label correctness, cap skew, open cap, fill level and crimp inspection, safety seal inspection, tablet hole presence

4 Bright Stock Identification



Bright Stock ID examples: UV or visible ink jet Data Matrix

Uses Data Matrix symbols to identify bright stock containers:

- Verify symbol readability immediately after printing
- Place product in warehouse
- Verify symbol correctness prior to labeling

MICROSCAN®

www.microscan.com

Product Information:

info@microscan.com

Auto ID Support:

helpdesk@microscan.com

Vision Support:

visionsupport@microscan.com

NERLITE Support:

nerlitesupport@microscan.com