

REAL-TIME, RELIABLE & RUGGED PERFORMANCE

Power Logistics & Operations with a Multi-Use, Smart Scanning Solution

Introducing Linea Pro G Slim (LPG Slim), an advanced data capture solution developed by IPCMobile in partnership with Google Pixel for Business and designed to keep up with today's fast-paced world. With 24/7 uptime and instant access to critical information, the AI-powered LPG Slim optimizes operations and empowers teams with uninterrupted connectivity, real-time communication, and informed decision-making.



4 PROGRAMMABLE
BUTTONS



PUSH-TO-TALK
CAPABILITY



HOT-SWAPPABLE
BATTERY



RUGGED
PROTECTION



INTEGRATION
SUPPORT

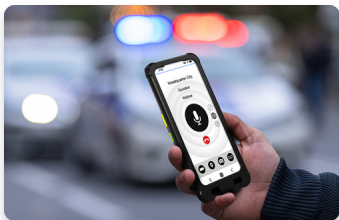
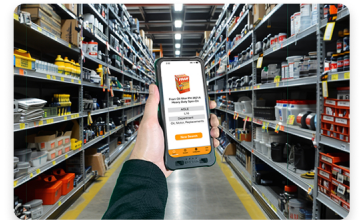


SMART & ACCURATE DATA COLLECTION

- Programmable buttons allow users to optimize workflows, trigger specific data collection, and ensure accurate data is automatically populated to whatever application is in the foreground
- Leverage AI to inspect camera frames, scan and validate barcodes, capture complete forms, verify IDs/VIN/TINs, and recognize objects and speech for features like translation and dictation
- Utilize the Pixel's native NFC to read payment, access, and loyalty cards and tags

EFFICIENT INVENTORY & ASSET MANAGEMENT

- Quickly count inventory, locate assets, track stock levels, process and replenish orders by leveraging AI modules to automate tasks and minimize human errors and discrepancies
- Streamline workflows, reduce paperwork, and automate data entry to save valuable time and resources for other mission-critical tasks
- Leverage NFC tags for on-the-spot asset updates, such as maintenance history or status changes



REAL-TIME COMMUNICATION & INSIGHTS

- Integrated Push-to-Talk functionality enables teams with seamless, instant communication at the click of a button, improving coordination and responsiveness for time-sensitive matters
- Send and receive updates between teams, departments, and facilities in real time, eliminating delays associated with traditional reporting methods
- Make informed decisions based off of reliable, up-to-date information

AROUND-THE-CLOCK POWER & RELIABILITY

- Equipped with a hot-swappable smart battery to ensure uninterrupted operations throughout multiple shifts, allowing teams to minimize downtime and maximize productivity, even in the most remote locations
- Built to withstand the toughest environments and operate in extreme temperatures, dust, water, and shock, with a 1.5m drop to concrete per MIL-STD-810G and IP67 protection rating
- Reduce equipment failures, workflow disruptions, and maintenance costs



BUILD A FUTURE-PROOF ENTERPRISE MOBILITY STRATEGY

Leverage IPCMobile's 31+ years of expertise and dedicated integration support team to bring your mobility visions to life through demos, POCs, legacy migrations, intuitive software, and custom hardware – including branded cases and accessories. No long-term contracts, development, or license required to enable LPG Slim and the AIWedge App, our no cost data toolkit for out-of-the-box deployments.

Contact us at (949) 222-0300 or info@ipcmobile.com to get started.