



## ● HPS1U

**Easily Connect Your Printer  
To A Network  
Print Anywhere Over The  
Internet/Intranet  
Easy To Install And Use**

### PACKAGE CONTENTS:

- ◆ HPS1U 10/100M USB Print Server
- ◆ A/C Power Adapter
- ◆ Setup Disk
- ◆ Quick Installation Guide



### Print over the Internet/Intranet to your home or office networked printer!

The Hawking HPS1U 10/100M USB Internet Print Server is a powerful and convenient tool to connect your USB printer to a 10/100M Network. Use the HPS1U instead of a dedicated computer to be the main contact point for all of your network printing requests. With the HPS1U and Internet Printing Protocol technology, printing over a WAN or the Internet becomes much easier. You can send a print job to a printer in another country just as easily as sending a print job to your home or office printer. IPP eliminates the need for fax communications between offices. Simply print an original document through the HPS1U's IPP capabilities and send it from one office to another. The print quality from IPP printing is equal to that of a document printed from your local office. With Hawking's HPS1U USB print server, your printer becomes a fully functional network print station.

### Systems Requirement:

- ◆ Windows 95/98/2000/NT/ME/XP, NetWare, Mac OS \*\*, UNIX or LINUX
- ◆ 10Base-T Ethernet or 100Base-TX Fast Ethernet network
- ◆ USB Printer

\* The HPS1U is not compatible with multi-function printers.

\*\* Supports Postscript Printers only.

## CAREFREE NETWORKING



## HPS1U

**Easily Connect Your Printer  
to a Network  
Print Anywhere over the  
Internet/Intranet  
Easy to Install and Use**

### RELATED PRODUCTS:

<b>HWR258M</b>	4-Port 10/100M Wireless Router
<b>HPS1P</b>	1-Port 10/100M Parallel Print Server
<b>HPS12U</b>	1-Port Parallel, 2-Port USB 10/100 Print Server
<b>HPS3P</b>	3-Port 10/100M Parallel Print Server
<b>HBR49</b>	4-Port 10/100M Router
<b>HAR11</b>	1-Port ADSL Modem w/ USB Port

### SPECIFICATIONS:

#### HPS1U Rev B

#### Interface:

- ◆ 1 10/100M UTP Port
- ◆ USB 1.1 Port

#### LED:

- ◆ Status: Orange
- ◆ 10M/100M: Orange/Green

#### Network Protocol Support:

◆ IPX/SPX, NetBEUI, TCP/IP, IPP, DHCP, JetAdmin, LPR, SMB/TCP, Email Printing, Raw Printing, Unix Logical Printer, Novell NetWare, Windows and Novell Server-Based Printing, and AppleTalk protocols

#### Network Operating System Support:

- ◆ Windows 95/98/ME/2000/NT/2000/XP
- ◆ NetWare 3.x and above
- ◆ Mac OS (Supports Postscript Printers Only)
- ◆ Unix and Linux

#### Power:

- ◆ Power Adapter: 7V DC/0.5A

### HAWKING TECHNOLOGIES, INC

**USA:** Irvine, California

**Website:** www.hawkingtech.com

**Email:** sales@hawkingtech.com

**Tel:** 888.662.8828, 949.790.0800

**Europe:** Rotterdam, The Netherlands

**Website:** www.hawkingeurope.com

**Email:** sales@hawkingeurope.com

**Tel:** 31.10.245.1600

### READY, NETWORK & GO!

It's easy to install, it's easy to use! Everyone can do it.

#### Step 1 - Connect it!

Connect your printer to the HPS1U's USB printer port. Connect to an existing network via the RJ-45 Port. The HPS1U uses a 10/100M auto-sensing Ethernet port so you don't have to worry about what speed your network is currently using.

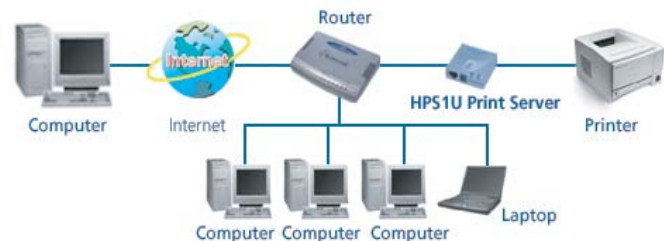
#### Step 2 - Install the Drivers and Utilities

Insert the setup CD into your computers' drive and run the setup program. Configuring your HPS1U is easy. You can use the Windows based configuration utility or configure the HPS1U via any web browser.

#### Step 3 - "Add" it

Simply run the Add Printer wizard and specify that you are printing to a network printer. For Internet printing, enter the printer's URL or IP address. Now you can enjoy fast Network printing from anywhere and from any application!

### NETWORK DIAGRAM:



### Dimension:

- ◆ 24(H) X 62(W) X 59(D) mm

### Operating Environment:

Temp: 10~40oC

Humid: 10~90%

**EMI Conformance:** FCC Class B, CE Mark Class B, C-Tick

### FEATURES

- Provides one 10/100Mbps auto-sensing port - Complies w/ IEEE 802. & 802.3u standards
- Provides one printer port that can attach directly to a printer's parallel port
- Supports:
  - TCP/IP, IPX/SPX, NetBEUI network protocols
  - LPR, Email Printing, Raw Printing, Unix Logical Printer
  - Peer-to-Peer Printing (TCP/IP/IPX/NetBEUI)
  - Server-based printing (Novell NetWare and Windows)
  - DHCP (both client and server) protocol
  - Web-based management, Windows Configuration Utility, SNMP Protocol
- Compatible with all major operating systems (Windows 95/98/Me/NT/2000/XP, NetWare (3.x above) and Unix/Linux)
- Easy-to-use installation, setup and diagnostic programs
- Provides flash memory for convenient software upgrades