



HP EliteOne 800 G4 23.8-in Healthcare Edition All-in-One Business PC

Safer, smarter, and secured for healthcare ¹

Optimize clinical workflows with the HP EliteOne 800 G4 23.8 Healthcare Edition All-in-One PC. It's engineered for easy, repeatable sanitization² and enhanced with optional integrated authentication³ features and collaboration³ tools for telemedicine.



HP recommends Windows 10 Pro.

- Windows 10 Pro⁹
- 23.8" diagonal screen

Promote patient safety

- Be ready for the next patient or user with our first AiO that is sanitizable with germicidal wipes every shift, every day⁴, and certified to meet EN/IEC 60601-1-2 technical standards for safety and performance.⁵

Simplify daily tasks with a smart design

- Free yourself from external tethered devices with an AiO that has an optional integrated dual-band RFID reader³ and FIPS-201 compliant fingerprint reader³ for single sign-on. Collaborate easily with a PC that is Skype for Business[®] certified.

Security where it matters most

- When patient data security is integral to your business, you want our most secure and manageable AiO for healthcare with HP Sure Start Gen4⁷, HP Manageability Integration Kit⁸, and robust HP multi-factor authentication options.³

Featuring

- Be productive in any situation and power through your day with Windows 10 Pro and powerful security, collaboration, and connectivity features from HP.
- Get a PC driven by the HP Elite-class combination of 8th Gen Intel[®] Core™ processors, and optional Intel[®] vPro™ and Intel[®] Optane™ memory.
- Create an optimal, collaborative telemedicine experience with an AiO that has a 23.8" diagonal FHD display, optional pop-up, dual-facing FHD camera, and enriched audio and is Vidyo Ready.
- Save time electronically prescribing medications with the optional FIPS 201-compliant fingerprint reader, or logging in with the optional IR camera and Windows Hello.
- Easily and securely log in with a simple badge tap on the HP EliteOne 800 G4 23.8 Healthcare Edition All-in-One PC with integrated support for Imprivata and Healthcast.
- Make the most of your workspace with the optional sleek, white, IP 65-rated HP USB Keyboard and Mouse Healthcare Edition, which simplify patient data entry and are easy to keep clean.
- Keep your critical OS processes running, even if malware tries to shut them down with self-healing protection.

HP EliteOne 800 G4 23.8-in Healthcare Edition All-in-One Business PC Specifications Table



Available Operating Systems	Windows 10 Pro 64 – HP recommends Windows 10 Pro. ¹ Windows 10 Home 64 ¹ Windows 10 Home Single Language 64 ¹ FreeDOS 2.0
Processor family	8th Generation Intel® Core™ i3 processor (i3-8100, i3-8300); 8th Generation Intel® Core™ i5 processor (i5-8500, i5-8600); 8th Generation Intel® Core™ i5+ processor; 8th Generation Intel® Core™ i7 processor (i7-8700); 8th Generation Intel® Core™ i7+ processor; Intel® Celeron® processor (G4900 is Windows 10 only); Intel® Pentium® processor (G5400, G5500, G5600 are Windows 10 only)
Available Processors^{18,22,23,24}	Intel® Celeron® G4900 with Intel® UHD Graphics 610 (3.1 GHz, 2 MB cache, 2 cores); Intel® Core™ i3-8100 with Intel® UHD Graphics 630 (3.6 GHz, 6 MB cache, 4 cores); Intel® Core™ i3-8300 with Intel® UHD Graphics 630 (3.7 GHz, 8 MB cache, 4 cores); Intel® Core™ i5+ 8500 (Core™ i5 and 16 GB Intel® Optane™ memory) (3 GHz base frequency, up to 4.1 GHz with Intel® Turbo Boost Technology, 9 MB cache, 6 cores); Intel® Core™ i5+ 8600 (Core™ i5 and 16 GB Intel® Optane™ memory) (3.1 GHz base frequency, up to 4.3 GHz with Intel® Turbo Boost Technology, 9 MB cache, 6 cores); Intel® Core™ i5-8500 vPro™ processor with Intel® UHD Graphics 630 (3 GHz base frequency, up to 4.1 GHz with Intel® Turbo Boost Technology, 9 MB cache, 6 cores); Intel® Core™ i5-8600 vPro™ processor with Intel® UHD Graphics 630 (3.1 GHz base frequency, up to 4.3 GHz with Intel® Turbo Boost Technology, 9 MB cache, 6 cores); Intel® Core™ i7+ 8700 (Core™ i7 and 16 GB Intel® Optane™ memory) (3.2 GHz base frequency, up to 4.6 GHz with Intel® Turbo Boost Technology, 12 MB cache, 6 cores); Intel® Core™ i7-8700 vPro™ processor with Intel® UHD Graphics 630 (3.2 GHz base frequency, up to 4.6 GHz with Intel® Turbo Boost Technology, 12 MB cache, 6 cores); Intel® Pentium® Gold G5400 with Intel® UHD Graphics 610 (3.7 GHz, 4 MB cache, 2 cores); Intel® Pentium® Gold G5500 with Intel® UHD Graphics 630 (3.8 GHz, 4 MB cache, 2 cores); Intel® Pentium® Gold G5600 with Intel® UHD Graphics 630 (3.9 GHz, 4 MB cache, 2 cores)
Chipset	Intel® Q370
Form factor	All-in-one
Maximum memory	32 GB DDR4-2666 SDRAM Transfer rates up to 2666 MT/s.
Memory slots	2 SODIMM
Internal storage	500 GB up to 1 TB 7200 rpm SATA HDD ² 500 GB up to 2 TB 5400 rpm SATA HDD ² up to 2 TB 5400 rpm SATA ² 256 GB up to 512 GB SATA SED FIPS 140-2 ² 256 GB up to 256 GB PCIe® NVMe™ SED ²
Optical drive	HP 9.5 mm Slim DVD-Writer; HP 9.5 mm Slim DVD-ROM ¹⁴
Display	60.45 cm (23.8") diagonal FHD IPS widescreen WLED-backlit glass covered (1920 x 1080) ¹⁹
Available Graphics	Integrated: Intel® UHD Graphics 630; Intel® UHD Graphics 610 ²⁶
Audio	Conexant CX5001 codec, 2 W internal speaker, HD audio ³
Expansion slots	1 M.2 2230; 2 M.2 2230/2280 ¹²
Ports and Connectors	Rear: 1 audio-out; 1 DisplayPort™ 1.2; 1 HDMI; 1 power connector; 1 RJ-45; 1 USB 3.1 Type-C™; 2 USB 3.1 Gen 1; 4 USB 3.1 Gen 2 Optional: 1 SD 4 card reader Left side: 1 headphone; 1 headset connector
Input devices	HP Conferencing Keyboard; HP USB Business Slim Keyboard; HP USB Healthcare Edition Keyboard and Mouse Combo; HP USB Smart Card (CCID) Keyboard; HP Wireless Business Slim Keyboard and Mouse Combo ^{7,8,13} ; HP USB 1000 dpi Laser Mouse; HP USB Optical Mouse ^{8,9} ;
Communications	LAN: Integrated Intel® I219LM GbE LOM; WLAN: Intel® Dual Band Wireless-AC 9560 802.11ac (2x2) and Bluetooth® 5 M.2, non-vPro™; Intel® Dual Band Wireless-AC 9560 802.11ac (2x2) and Bluetooth® 5 M.2, vPro™ ^{4,5} ;
Camera	2 MP, 1080p, up to 30 fps, FHD pop-up Camera with integrated dual array digital microphone, maximum resolution of 1920 x 1080; 2 MP, 1080p, FHD pop-up Camera with IR sense (front) and 2 MP webcam (rear) with integrated dual array digital microphone, maximum resolution of 1920 x 1080, IR camera for face authentication with Windows Hello ⁶
Environmental	Operating temperature: 10 to 35°C; Operating humidity: 10 to 90% RH
Available Software	Absolute Persistence Module; HP Hotkey Support; HP Noise Cancellation Software; HP Recovery Manager; HP Secure Erase; HP Support Assistant; HP Sure Click; Native Miracast Support; HP Wireless Wakeup; Buy Office (sold separately); HP LAN-Wireless Protection; Windows Defender; HP JumpStarts ^{15,29,30,31,32}
Security management	Administrator password (via BIOS); DriveLock; Hood sensor; HP BIOSphere with Sure Start; HP Power On Authentication; Power-on password (via BIOS); RAID configurations; SATA port disablement (via BIOS); Serial enable/disable (via BIOS); Setup password (via BIOS); Support for chassis padlocks and cable lock devices; Trusted Platform Module TPM 2.0 Embedded Security Chip (SLB9670 - Common Criteria EAL4+ Certified); USB enable/disable (via BIOS); Master Boot Record Security; HP Client Security Suite Gen 4; HP Sure Start Gen 4 ^{16,20,34,35,36,37}
Management features	HP Driver Packs (download); Update BIOS via Cloud or Network (BIOS feature); Ivanti Management Suite ^{17,33}
Power	180 W internal power supply, up to 87% efficiency, active PFC
Dimensions	54.04 x 5.4 x 34.19 cm (Without stand.)
Weight	6.4 kg (Starting weight without stand. Exact weight depends on configuration.)
Energy efficiency compliance	ENERGY STAR® certified and EPEAT® Gold registered configurations available; CECP ¹⁰
Environmental specifications	Low halogen ¹¹
Warranty	3 year (3-3-3) limited warranty and service offering includes 3 years of parts, labor and on-site repair. Terms and conditions vary by country. Certain restrictions and exclusions apply.

HP EliteOne 800 G4 23.8-in Healthcare Edition All-in-One Business PC

Accessories and services (not included)

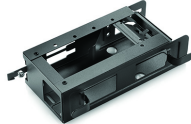
HP PCIe NVMe TLC 256GB SSD M.2 Drive



Revolutionize large file handling and response times with HP PCIe NVMe TLC 256GB SSD M.2 Drive, a remarkably affordable and innovative PCIe-based NVMe memory SSD storage solution.

Product number: 1CA51AA

HP DM VESA Power Supply Holder Kit



Simplify cable management when mounting your HP Desktop Mini with the HP DM VESA Power Supply Holder Kit, which attaches to your HP Desktop Mini Security/Dual VESA Sleeve v2 (2JA32AA) to reduce cable clutter from the PC's power supply cable and brick.

Product number: 1RL87AA

HP Wireless Slim Business Keyboard



Enjoy easy data entry and wireless connectivity with the HP Wireless Business Slim Keyboard, designed to complement the 2015 class of HP Business PCs. Enjoy easy data entry and wireless connectivity with the HP Wireless Business Slim Keyboard, designed to complement the 2015 class of HP Business PCs.

Product number: N3R88AA

HP Keyed Cable Lock 10 mm



Help keep your notebook safe in the office and high-traffic areas by tethering it to a secure surface with the HP Master Keyed Cable Lock 10mm, designed specifically for ultra-thin profile notebooks. Help keep your notebook safe in the office and high-traffic areas by tethering it to a secure surface with the HP Master Keyed Cable Lock 10mm, designed specifically for ultra-thin profile notebooks.

Product number: T1A62AA

HP 5 year Next Business Day Onsite Hardware Support for Desktops HP 5 year Next Business Day Onsite Hardware Support for Desktops



Receive 5 years of next business day onsite HW Support from an HP-qualified technician for your computing device, if the issue cannot be solved remotely.

Product number: U7899E

HP EliteOne 800 G4 23.8-in Healthcare Edition All-in-One Business PC

Messaging Footnotes

- ¹ Safer and smarter based on HP Healthcare Edition products compared to other HP products as of August 2017 based on ability to be cleaned with sanitizing agents listed in the user guide and EN/IEC 60601-1-2 testing.
- ² See user guide for cleaning instructions.
- ³ Dual-band RFID reader and fingerprint reader sold together as a configurable option; IR camera, Intel® vPro™, and pop-up, dual-facing FHD camera sold separately as configurable options.
- ⁴ Based on HP's internal analysis as of Nov. 1, 2017 of AiOs tested to simulate up to 10,000 wipes with germicidal towelettes over a 3-year period. See user guide for cleaning instructions. The HP EliteOne 800 G4 23.8 Healthcare Edition AiO is not intended for use in diagnosis, cure, treatment or prevention of disease or other medical conditions.
- ⁵ The HP EliteOne 800 G4 23.8 Healthcare Edition AiO is not intended for use in diagnosis, cure, treatment or prevention of disease or other medical conditions.
- ⁶ HP Sure Start Gen4 is available on HP Elite and HP Pro 600 products equipped with Intel® 8th generation processors.
- ⁸ HP Manageability Integration Kit can be downloaded from <http://www.hp.com/go/clientmanagement>.
- ⁹ Not all features are available in all editions or versions of Windows. Systems may require upgraded and/or separately purchased hardware, drivers, software or BIOS update to take full advantage of Windows functionality. Windows 10 is automatically updated, which is always enabled. ISP fees may apply and additional requirements may apply over time for updates. See <http://www.windows.com>.
- ¹⁰ Multi-Core is designed to improve performance of certain software products. Not all customers or software applications will necessarily benefit from use of this technology. Performance and clock frequency will vary depending on application workload and your hardware and software configurations. Intel's numbering, branding and/or naming is not a measurement of higher performance.
- ¹¹ Some functionality of this technology, such as Intel® Active Management Technology and Intel Virtualization technology, requires additional 3rd party software in order to run. Availability of future "virtual appliances" applications for Intel vPro technology is dependent on 3rd party software providers.
- ¹² Intel® Optane™ memory system acceleration does not replace or increase the DRAM in your system and requires configuration with an optional Intel® Core™ i(5 or 7)+ processor.
- ¹³ Requires Windows 10.
- ¹⁴ Single sign-on software sold separately and requires optional FIPS 201-compliant fingerprint reader/dual-band RFID reader.
- ¹⁶ IP 65 test results are not a guarantee of future performance under these test conditions. Accidental damage requires an optional HP Accidental Damage Protection Care Pack.
- ¹⁷ Sold separately.
- Microsoft, Windows, the Windows Logo, and Skype are trademarks or registered trademarks of Microsoft Corporation in the U.S. and other countries. Intel, the Intel logo, Intel Core, vPro, and Optane are trademarks or registered trademarks of Intel Corporation or its subsidiaries in the United States and other countries. USB Type-C™ and USB-C™ are trademarks of USB Implementers Forum.

Technical Specifications Footnotes

- ¹ Not all features are available in all editions or versions of Windows. Systems may require upgraded and/or separately purchased hardware, drivers, software or BIOS update to take full advantage of Windows functionality. Windows 10 is automatically updated, which is always enabled. ISP fees may apply and additional requirements may apply over time for updates. See <http://www.windows.com>
- ² For hard drives and solid state drives, GB = 1 billion bytes. TB = 1 trillion bytes. Actual formatted capacity is less. Up to 36 GB (for Windows 10) of system disk is reserved for the system recovery software.
- ³ Universal Audio Jack with CTIA headset support (re-taskable for headphone/line out/microphone in/line in).
- ⁴ Wireless LAN is optional and must be bought at purchase. Wireless access point and Internet service required and not included. Availability of public wireless access points limited.
- ⁵ The specifications for the 802.11ac WLAN are draft specifications and are not final. If the final specifications differ from the draft specifications, it may affect the ability of the device to communicate with other 802.11ac WLAN devices.
- ⁶ Sold separately or as an optional feature.
- ⁷ HP USB Business Slim Antimicrobial Keyboard: China only.
- ⁸ Keyboards and mouse are optional or add-on features.
- ⁹ HP USB Antimicrobial Mouse: China only.
- ¹⁰ EPEAT® registered where applicable. EPEAT registration varies by country. See <http://www.epeat.net> for registration status by country. Search keyword generator on HP's 3rd party option store for solar generator accessories at www.hp.com/go/options
- ¹¹ External power supplies, power cords, cables and peripherals are not Low Halogen. Service parts obtained after purchase may not be Low Halogen.
- ¹² (2) M.2 Socket 3 Type 2230/80-M.
- ¹³ HP USB Business Slim Antimicrobial Keyboard: China only.
- ¹⁴ HP Optical Drive: Optional.
- ¹⁵ Absolute Persistence module: Absolute agent is shipped turned off, and will be activated when customers activate a purchased subscription. Subscriptions can be purchased for terms ranging multiple years. Service is limited, check with Absolute for availability outside the U.S. The Absolute Recovery Guarantee is a limited warranty. Certain conditions apply. For full details visit: <http://www.absolute.com/company/legal/agreements/computrace-agreement>. Data Delete is an optional service provided by Absolute Software. If utilized, the Recovery Guarantee is null and void. In order to use the Data Delete service, customers must first sign a Pre-Authorization Agreement and either obtain a PIN or purchase one or more RSA SecurID tokens from Absolute Software.
- ¹⁶ HP BIOSphere with Sure Start: HP BIOSphere Gen4 requires Intel® or AMD 8th Gen processors. Features may vary depending on the platform and configurations.
- ¹⁷ HP Driver Packs: HP Driver Packs not preinstalled, however available for download at <http://www.hp.com/go/clientmanagement>.
- ¹⁸ Multi-core is designed to improve performance of certain software products. Not all customers or software applications will necessarily benefit from use of this technology. Performance and clock frequency will vary depending on application workload and your hardware and software configurations. Intel's numbering, branding and/or naming is not a measurement of higher performance.
- ¹⁹ Non-Touch.
- ²⁰ HP Drive Lock is not supported on NVMe drives.
- ²¹ Some devices for academic use will automatically be updated to Windows 10 Pro Education with the Windows 10 Anniversary Update. Features vary; see <https://aka.ms/ProEducation> for Windows 10 Pro Education feature information.
- ²² Intel® Turbo Boost technology requires a PC with a processor with Intel Turbo Boost capability. Intel Turbo Boost performance varies depending on hardware, software and overall system configuration. See www.intel.com/technology/turboboost for more information.
- ²³ Some functionality of vPro, such as Intel Active Management Technology and Intel Virtualization technology, requires additional 3rd party software in order to run. Availability of future "virtual appliances" applications for Intel vPro technology is dependent on 3rd party software providers. Compatibility with future "virtual appliances" is yet to be determined."
- ²⁴ Intel® Optane™ memory system acceleration does not replace or increase the DRAM in your system and requires configuration with an optional Intel® Core™ i(5 or 7)+ processor.
- ²⁵ Your product does not support Windows 8 or Windows 7 drivers. In accordance with Microsoft's support policy, HP does not support the Windows 8 or Windows 7 operating system on products configured with Intel® 8th generation and forward processors or provide any Windows 8 or Windows 7 drivers on <http://www.support.hp.com>.
- ²⁶ Intel® UHD Graphics 630: integrated on 8th gen Core i7/i5/i3, Pentium® Gold G5600, G5500; Intel® UHD Graphics 610: integrated on Pentium® Gold G5400, Celeron® G4900.
- ²⁹ HP Secure Erase: For the methods outlined in the National Institute of Standards and Technology Special Publication 800-88 "Clear" sanitation method.
- ³⁰ HP Sure Click is available on most HP PCs and supports Microsoft® Internet Explorer and Chromium™. Supported attachments include Microsoft Office (Word, Excel, PowerPoint) and PDF files in read only mode, when Microsoft Office or Adobe Acrobat are installed.
- ³¹ Windows Defender Opt In, Windows 10, and internet connection required for updates.
- ³² Native Miracast Support: Miracast is a wireless technology your PC can use to project your screen to TVs, projectors, and streaming.
- ³³ Ivanti Management Suite: subscription required.
- ³⁴ HP Client Security Suite Gen 4: Including HP Security Manager (including Credential Manager, HP Password Manager [HP Password Manager requires Internet Explorer or Chrome or Firefox. Some websites and applications may not be supported. User may need to enable or allow the add-on / extension in the Internet browser.], and HP Spare Key) and Power On Authentication, HP Fingerprint Sensor (HP Fingerprint Sensor sold separately or as an optional feature), HP Device Access Manager, HP Power On Authentication.
- ³⁵ Trusted Platform Module TPM 2.0 Embedded Security Chip (SLB9670 - Common Criteria EAL4+ Certified): Firmware TPM is version 2.0. Hardware TPM is v1.2, which is a subset of the TPM 2.0 specification version v0.89 as implemented by Intel Platform Trust Technology (PTT).
- ³⁶ RAID configurations: RAID configuration is optional and does require a second hard drive.
- ³⁷ HP Sure Start Gen 4: HP Sure Start Gen4 is available on HP Elite and HP Pro 600 products equipped with 8th generation Intel® or AMD processors.

Sign up for updates hp.com/go/getupdated

© Copyright 2019 HP Development Company, L.P. The information contained herein is subject to change without notice. The only warranties for HP products and services are set forth in the express warranty statements accompanying such products and services. Nothing herein should be construed as constituting an additional warranty. HP shall not be liable for technical or editorial errors or omissions contained herein.

Intel, Core, Pentium, Celeron and vPro are trademarks of Intel Corporation or its subsidiaries in the U.S. and/or other countries. Bluetooth is a trademark of its proprietor and used by HP Inc. under license. USB Type-C™ and USB-C™ are trademarks of USB Implementers Forum. ENERGY STAR is a registered trademark of the U.S. Environmental Protection Agency. DisplayPort™ and the DisplayPort™ logo are trademarks owned by the Video Electronics Standards Association (VESA®) in the United States and other countries. All other trademarks are the property of their respective owners.

4AA7-3196, March 2019

--

