

1947L
Rear Mount


3000 Series 19" LCD Touchmonitor

SPECIFICATIONS

Model	1947L
Case/Bezel color	Black
Display type	Active matrix TFT LCD
Display size	19" diagonal
Useful screen area	Horizontal 14.8" (376 mm)
	Vertical 11.9" (301 mm)
Monitor dimensions	Width 17.1" (434 mm)
	Height 14.2" (361 mm); with bracket: 18" (456 mm)
	Depth 2.16" (54.7 mm)
Dimensional drawing number	MS500441 (available at www.elotouch.com)
Optimal (native) resolution	1280 x 1024 at 70 or 75 Hz
Other supported resolutions	1152 x 864 at 75 Hz; 1024 x 768 at 60, 65, or 75 Hz; 832 x 624 at 75 Hz (Mac); 800 x 600 at 56, 60, 72, or 75 Hz; 720 x 400 at 70 Hz; 640 x 480 at 60, or 75 Hz
Colors	16.7 million with dithering
Brightness	LCD panel 300 cd/m ² (typical)
	LCD panel with touchscreen AccuTouch: 240 cd/m ² (typical); SecureTouch: 270 cd/m ² (typical); IntelliTouch: 276 cd/m ² (typical)
Response time	Tr: 15 msec (typical); Tf: 10 msec (typical)
Viewing angle (from center)	Horizontal (left/right) ±85° or 170° total (typical) at CR=10
	Vertical (up/down) ±85° or 170° total (typical) at CR=10
Contrast ratio	700:1 (typical)
Input video format	Analog (no proprietary video card needed) or Digital Video Input (DVI-D)
Input video signal connector	DVI-D or mini D-Sub 15-Pin (via included adaptor)
Input frequency	Horizontal 31–80 kHz; vertical 56–75 Hz
Power supply	External power supply, 100–240 VAC, 50–60 Hz; monitor input voltage: 12 V; current: 3.75 A max.
Power dissipation	40 W max. typical
Temperature	Operating 0°C to 45°C; storage –20°C to 60°C
Humidity	Operating 20% to 80%; storage 5% to 90%; noncondensing
Weight (approx.)	Actual 21 lb (9.5 kg); shipping 29 lb (13.2 kg)
Warranty	Monitor 3 years
	Touch technology 5 years AccuTouch; 10 years IntelliTouch/SecureTouch
	Backlight lamp life 40,000 hours to half brightness
Other features	Remote OSD with 1.8 m cable: auto/sel, up, down; menu with contrast, brightness, H/V position, color, temperature, clock, phase, recall, OSD time, language (English, German, Spanish, Japanese, French); mounting options: 100 mm or 75 mm VESA mount; rear mount through bezel or with brackets; panel mount option; mounting brackets included

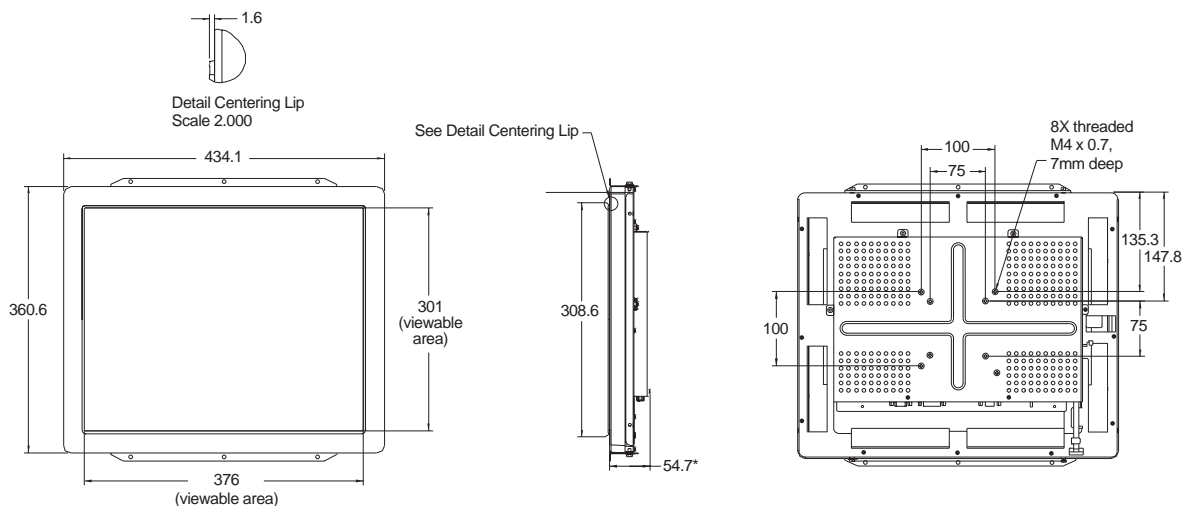
ORDERING INFORMATION

Touch Technology	Touch Interface	Surface Treatment	Elo Part Number	Agency Approvals
AccuTouch	Serial	Antiglare	D52226-000	UL, cUL, FCC, IC, CE, TÜV-GS, VCCI, C-Tick Class B
AccuTouch	USB	Antiglare	A50245-000	UL, cUL, FCC, IC, CE, TÜV-GS, VCCI, C-Tick Class B
SecureTouch	Serial	Antiglare	928182-000	UL, cUL, FCC, IC, CE, TÜV-GS, VCCI, C-Tick Class B
SecureTouch	USB	Antiglare	A91313-000	UL, cUL, FCC, IC, CE, TÜV-GS, VCCI, C-Tick Class B
IntelliTouch	Serial	Antiglare	229628-000	UL, cUL, FCC, IC, CE, TÜV-GS, VCCI, C-Tick Class B
IntelliTouch	USB	Antiglare	C71685-000	UL, cUL, FCC, IC, CE, TÜV-GS, VCCI, C-Tick Class B

- Users should independently evaluate the suitability of the product for their application.
- All prices, models, and availability subject to change without notice.

- Stock quantities may be limited. Larger quantities are available within one week.
- For Product Agency Certifications refer to our Web site.

3000 Series 19" LCD Touchmonitor



*Noted dimensions are for non-touch, AccuTouch, and IntelliTouch only. For SecureTouch add 4 mm to dimension.

