

Mobile POS Tablet

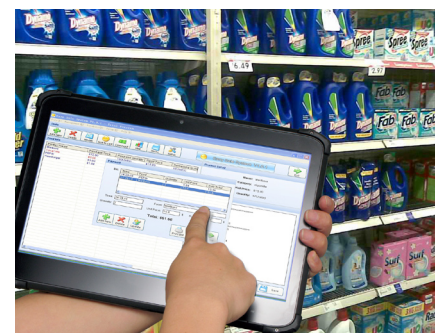
Rugged, Multi-functional for Point-of-Service and Sales Applications



The DT Research Mobile POS Tablets feature the integration of brilliant 9.7" and 13.3" capacitive touch screens and high performance yet energy-efficient Intel® Atom™ or Core™ i processors within slim, light, and durable packages. With built-in smart card reader, Wi-Fi and Bluetooth as well as options for 2D barcode scanner, magnetic stripe reader, NFC/RFID reader and camera modules, these tablets are ideal for point-of-service/sales applications, and offer seamless information capture for instant transmission on the sales floor, in the restaurant and in the warehouse.

Features

- 9.7" or 13.3" LED-backlight screen with capacitive touch
- Intel® Atom™ or Core™ i processor; high performance with low power consumption
- Support for Microsoft® Windows® operating system
- IP-rated front panel
- Built-in full-slot smart card reader (DT313 series)
- Optional EMV® Chip-and-Signature card reader (DT315CR)
- Optional camera, NFC/RFID reader, magnetic stripe reader, and 2D barcode scanner
- Optional 3G WWAN module or 4G LTE module



Applications

- **Inventory/ Warehousing**
- **Control/ Monitoring**
- **Manufacturing**
- **Finance**
- **Hospitality**
- **Retail**
- **Healthcare**
- **Education**

Specifications



Model	DT315CR	DT313C	DT313H
--------------	----------------	---------------	---------------

System

CPU	Intel® Atom™ Quad Core, 1.44GHz (up to 1.92GHz)	Intel® Celeron®, 1.4GHz	Intel® Core™ i5, 2.2GHz or i7, 2.4GHz
RAM	4GB	4GB	8GB
Storage	128GB Flash	64GB to 256GB flash	128GB to 512GB flash
Operating System	Microsoft® Windows® 10 IoT Enterprise	Microsoft® Windows® 7 Professional or Windows® 10 IoT Enterprise	
Display	9.7" LED-backlight screen with capacitive touch; anti-reflection outdoor viewable	13.3" LED-backlight screen with capacitive touch	
Display Resolution	1024 x 768	1920 x 1080	1920 x 1080
Control Switch and Buttons	1 power button and 2 trigger buttons	1 power button, 1 programmable button and 1 Wi-Fi switch	
Indicator	1 power/ battery status LED	1 power/ battery status LED	1 power/ battery status LED
Microphone	N/A	Built-in microphone with DSP for video conference call	
Speaker	Built-in speaker	Built-in speaker	Built-in speaker

Network Interface

WLAN	Wi-Fi 802.11ac, 2.4GHz/ 5GHz dual band	Wi-Fi 802.11ac, 2.4GHz/ 5GHz dual band	Wi-Fi 802.11ac, 2.4GHz/ 5GHz dual band
Bluetooth	Bluetooth 4.0	Bluetooth 4.0 LE	Bluetooth 4.0 LE

I/O Ports

USB Port	USB 3.0 X 1	USB 3.0 X 1	USB 3.0 X 1
Headset Jack	1	2	2
DC-in	1	1	1
SD Slot	1 full size SD card slot	1 full size SD card slot	1 full size SD card slot
Smart Card Reader	N/A	Full-slot, reads ISO 7816 T=0, T=1; 1.8/3/5V smart card	

Mechanical and Environmental

Fan/ Fanless	Fanless	Fan	Fan
AC/DC Adapter	Input: 100 – 240V AC; Output: 12V DC, 5A	Input: 100 – 240V AC; Output: 19V DC, 3.42A	
Battery Pack	Hot swappable battery, 3.7V, 8800mAh	Internal 14.8V, 1880mAh/ Optional: External 14.8V, 1850mAh	
Enclosure	ABS + PC plastics and magnesium-aluminum alloy	ABS + PC plastics	ABS + PC plastics
Protective Bumpers	Rubber grips with handstrap	Rubber bumpers on each corner with handstrap for handling protection	
Dimensions (H x W x D)	8.3 x 10.2 x 0.8 in/ 211.5 x 260 x 20.3 mm	8.5 x 13.5 x 0.75 in/ 216 x 344 x 18.9mm	8.5 x 13.5 x 0.75 in/ 216 x 344 x 18.9mm
Weight	2.69 lbs/ 1.22 kg	3.15 lbs/ 1.43 kg	3.15 lbs/ 1.43 kg
Water and Dust Resistance	IP52 front panel	IP54 front panel	IP54 front panel
Shock and Vibration	N/A	MIL-STD-810G	MIL-STD-810G
Regulatory	FCC Class B, CE, RoHS compliant		
Temperature	Operation: 0 °C - 40 °C; Storage: -20°C – 60°C		
Humidity	0% – 90% non-condensing		

Major Options

Magnetic Stripe Reader	Single, double, or triple track; reads AAMVA, ISO bank (ISO 7811) and other cards; supports unencrypted mode, TDES encryption with static/DUKPT keys management, and Remote Key Injection (RKI)	N/A	N/A
Barcode Scanner (2D)	2D barcode scanner; reads 1D also		
Camera	5 megapixel back camera	2 megapixel front camera and 5 megapixel back camera	
EMV® Chip-and-Signature Card Reader	With TDES/AES/RKI; supports end-to-end certified EMV chip payments Features Level 1, 2, and 3 EMV Payment Path certifications for major payment (Gateway/Processor) partners, including; Worldnet/First Data; Creditcall/First Data; Bluefin/First Data; Datacap/Vantiv	N/A	N/A
NFC/RFID Reader	Complies with HF 13.56MHz, ISO standard 15693, 14443A(B) & 18000-3 mode-1		
Mobile Broadband	N/A	3G WWAN module or 4G LTE/AWS module	3G WWAN module or 4G LTE/AWS module

* Specifications subject to change without notice.

