

SCANNER A4

A4 front/rear color Scanner

Custom A4 Scanners guarantee high performance (400 mm/s) of front/back color scanning and better than average data transfer (USB 3.0 at 5 Mbit/s) to support all applications with a resolution up to 600 dpi (at 73 mm/s), along with the option of integrating with third party applications. The main reference markets are: banking, industrial, aviation, railways, public transports, gaming, logistics and retail.



CHARACTERISTICS

- Front and rear scanning
- Sturdy: full metal body
- 200-300-600dpi resolution double side
- Scanner max speed: 400 mm/sec (B/W at 300dpi)
- Front paper mouth with RGB led
- Sensor for detection of jam/blocked sheet (internal encoder)
- Document alignment system in entrance(deskew)
- Fully inspectionable for easy cleaning and maintenance
- Retract or eject
- Paper width: min 70 mm - max 218 mm
- Max scanning area: 217 mm
- USB 2.0/3.0
- SW integration through evolved SDK library

AVAILABLE VERSION

- Interception system of double or overlapping sheets with ultra sound sensor
-

TECHNICAL SHEET

GENERALS

Processor	High speed, high performance scanner ASIC with ARM11 CPU 375 MHz
Sensors	Paper input and output presence, paper jam and paper holding, cover open, deskew, upper and lower CIS, ultrasonic sheet overlap detection (optional)
Drivers	Windows® (32/64 bit) – only on request WHQL and silent installation Linux (32/64 bit)
Windows Libraries	CuDoubleSidedScannerAPI for Win32 and .NET
Interfaces	USB 5 Gbit/s (USB 3.1)
Memories	RAM 512 MB DDR3

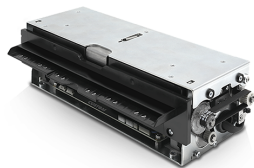
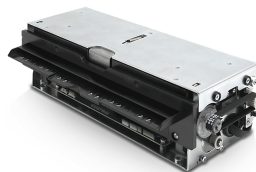
SCANNER

Scanner type	Contact Image Sensor (CIS)
Resolution	200 dpi, 300 dpi, 600 dpi
Light source	Colors LEDs: Red (635 nm), Green (525 nm), Blue (460 nm)
Scanning side and insertion direction	Two-sided
Scan modality	Black and White, greyscale, RGB, red colour, green colour, blue colour
Max. scan speed	600 dpi resolution = 73 mm/s RGB 200/300 dpi resolution = 286 mm/s Black and White, greyscale 200/300 dpi resolution = 400 mm/s
Min. scan length	70 mm
Max. scan length	1000 mm
Max. scan width	217.4 mm
Image format	.bmp, .jpeg, .png, .raw, .tiff (without compression), .tiff (CCITT3 compression), .tiff (CCIT4 compression), .tiff (RLE compression), .tiff (LZW compression)
Functions	Mechanical deskew Image crop and software deskew (only for .jpg images)
Paper width	from 70 mm to 218 mm
Paper weight	from 50 g/m2 to 200 g/m2
Power supply	from 12 Vdc to 24 Vdc $\pm 10\%$ (optional external power supply)
Medium consumption	1 A
Operating temperature	from 0 °C to +50 °C
Dimensions	274 (L) x 77 (H) x 127.4 (W) mm, with cover closed 274 (L) x 144 (H) x 139.4 (W) mm, with cover open
Weight	1980 g

MODELS

**992LT010100J00**

SCANNER A4 FRONT REAR COLOR

**992LT010300J00**SCANNER A4 FRONT REAR
ULTRASONIC**992LT010400J00**SCANNER A4 FRONT REAR
ULTRASONIC CHAMELEON PRO

Via Berettine, 2 - 43010 Fontevivo PR - VAT: IT02498250345 - TEL: +39 0521 680111 - FAX: +39 0521 610701 - UNIQUE CODE: 8RQN7AZ

The technical data on this website are not binding and may be changed without advanced notice.

Last update: 08 June 2023