

# CubiScan® 110

## *Applications/Benefits*

### *Freight Manifesting / Auditing Applications*

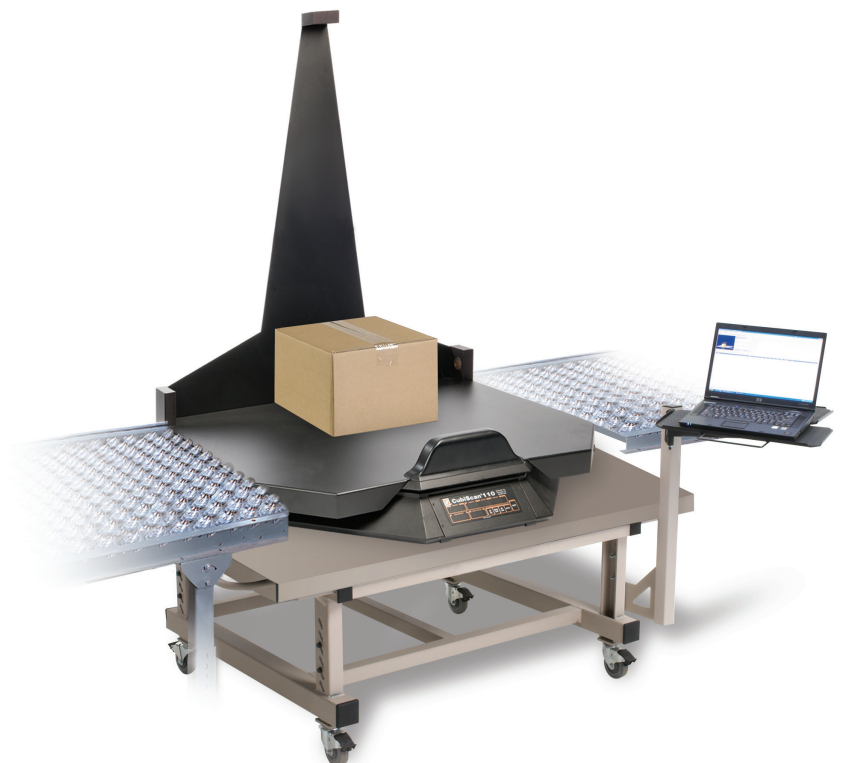
- Provides dimensional-weight data for calculating shipping charges
- Allows for pass-through package processing for added throughput
- Designed to interface directly to computer-based manifesting/shipping systems
- Has user-definable "dim factors" for dimensional-weight calculations

### *Other*

- QBIT™ PC interface software included
- Real-time or batch-mode data transfer to host system
- Mobile system moves anywhere in your warehouse or shipping area
- Dimensional and weight data available in metric and/or imperial units
- Mobile CubiScan work station options include:
  - Sturdy metal cart with hard rubber tires*
  - 12 volt deep cycle battery, charger, and power inverter*  
*(with more than 12 hour battery life)*
  - Computer shuttle arm*  
*(supports PC monitor and keyboard)*
  - Bar code scanning interface*  
*(with inclusion of handheld bar code scanning device)*
- Modular design allows for easy user set up and maintenance
- Uses sensing technology which is safe for both operators and package contents



FIRST CLASS





## CubiScan 110 Specifications

### Physical Specifications

Length	32 in (813 mm)
Width	32 in (813 mm)
Height	48 in (1,220 mm)
Weight	70 lbs (32 kg)

### Performance Specifications

Measurement Range	
Length	0.5 in (13 mm) to 24 in (610 mm)
Width	0.5 in (13 mm) to 30 in (762 mm)
Height	0.5 in (13 mm) to 36 in (914 mm)
Measurement Increment	0.1 in (2 mm)
Weight Capacity	100 lbs (50 kg)
Weight Increment	0.1 lbs (0.05 kg)

### Other

Measuring Sensor	Ultrasonic
Weight Sensor	Load cell
Connectivity	2 - serial ports, EIA RS232-C, bi-directional, 1 - serial printer port, EIA RS232-C, bi-directional with flow control, 1 - Ethernet connection, 10 BaseT, 10 Mbps
User Interface	Integrated display & keypad / QBIT™ software
Minimum PC Specifications	Windows 7/XP/95/98/NT/2000, Pentium II processor, 20 Megabytes of Disk Space, Screen Resolution Setting of 800 X 600
Power Requirements	95 - 250 VAC, 47 - 63 Hz
Operating Temperature	14° - 104° F (-10° to 40° C)
Humidity	0 - 90% non-condensing

CubiScan® and the Quantronix logo are registered trademarks of Quantronix, Inc. Scanning New Dimensions™, Qbit™, QbitWIN™, and The FreightWeigh System™ are trademarks of Quantronix, Inc. Windows® is a registered trademark of Microsoft Corporation.

CubiScan software and firmware are protected by international and domestic copyrights.

CubiScan 100 measurement products incorporate technology protected by U.S. Patent No. 5,422,861 and foreign patents.

CubiScan 150 measurement products are protected by one or more of U.S. Patents Re42,430 and D490,328 and foreign patents. Another foreign patent is pending.

CubiScan 110 measurement products are protected by one or more of U.S. Patent Re42,430 and foreign patents. Another foreign patent is pending.

CubiScan 1000-VS measurement products incorporate technology protected by U.S. Patent No. 7,277,187 and foreign patents.

This document Copyright© 2011 by Quantronix, Inc. All rights reserved.

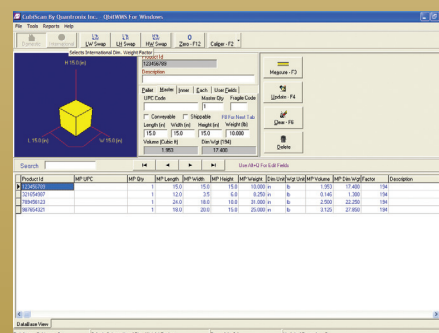
### CubiScan 110.

With a new twist on static dimensioning, the CubiScan 110 provides you with a flexible and ergonomic layout for maximum throughput and productivity. Working with its length and width sensors to the sides, the 110 allows for pass-through package processing—ideal for small to medium parcel manifesting and shipment auditing applications. And you'll still enjoy the power and convenience of our unmatched interface features that allow data to be quickly transferred to your shipping or warehouse management system for immediate use.

The CubiScan 110 is robust, with a maximum measurement range of 30 x 24 x 36 inches (762 x 610 x 914 mm) and a net weight capacity of 100 lbs (50 Kg). Yet it is precise, with a measurement resolution of 0.1 inches (2 mm) and weight resolution of 0.1 lbs (0.05 kg).

The CubiScan 110 is very flexible and can be used as mobile stand-alone system when deployed on as a mobile cart with a portable power supply system, or it can be located between gravity conveyor for quick and efficient processing of parcels in a fast paced manifesting application. With an optional PC-based interface (called Qbit™), the CubiScan 110 is capable of managing thousands of data records, can interface to barcode scanning equipment, label printing devices, and can communicate directly (in batch or real-time mode) with your shipping/manifesting software or warehouse management system.

Discover how the CubiScan 110 can help eliminate costly charge-backs and make a difference in the most important aspect of your business: the bottom line.



*Data files are created, managed, and made available for transfer to a host manifesting/shipping system*

**CUBISCAN**  
CUBING & WEIGHING SYSTEMS BY QUANTRONIX

380 South 200 West • P.O. Box 929 • Farmington, Utah • 84025 • USA  
1-800-488-CUBE • (801) 451-7000 • Fax: (801) 451-0502  
e-mail: [info@cubiscan.com](mailto:info@cubiscan.com) • [www.cubiscan.com](http://www.cubiscan.com)