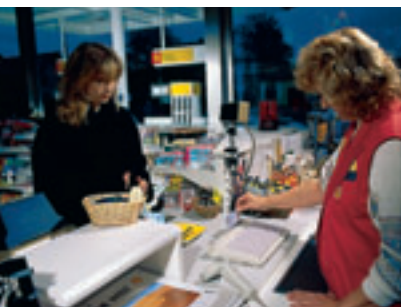


Advanced Performance Line

Freely programmable keyboard to read credit cards, EC cards and barcodes

MX technology with Gold Crosspoint contacts

G80-1950



Filling station



FCC Part 15
Subpart B
Class B

Other approvals available on request.

General

The G80-1950 keyboard is a programmable compact matrix keyboard with 105 keys. Thanks to an integrated magnetic stripe card swipe reader and barcode decoder, it is particularly suitable for use with electronic POS systems.

Key benefits

- 105 programmable keys (up to 16 characters per key)
- Keyboard can be configured using keycaps and various key formats
- Requires less space, thanks to integrated magnetic stripe card reader
- All data is transferred to system through keyboard interface

Barcode decoder

Welch Allyn decoder for automatic recognition of following codes:

- Code 39
- Code 93
- Code 128
- Code 16K
- Plessey
- Industrial 2/5
- Matrix 2/5
- Codabar
- Interleaved 2/5
- Code 11
- UPC
- EAN
- JAN
- Automatic recognition of wand or laser emulations

Barcode reader parameters are programmable

Magnetic stripe card reader

- Capable of reading any ISO 7812-compliant magnetic stripe card
- Up to 3 tracks can be read (selectable)
- Magnetic stripe reader parameters are programmable

Programmable keys

All keys can be programmed with up to 16 characters at one level. Interchangeable keycaps can be used to segment the keyboard layout.

Technical specifications

Temperature range:
Storage temperature:
-20 °C to +60 °C
Operating temperature:
0 °C to +50 °C

Dimensions of housing:
(L x W x H)
320 x 218 x 49 mm

Weight: approx. 1000 g

Power supply:
+5 V/DC ±5% SELV

Current input:
typ. 70 mA
(without barcode reader)

Connecting cable:
approx. 1.75 m long with PS/2

Cherry MX keys with
Gold Crosspoint contacts

Operating life of individual keys >50 million operations

Magnetic stripe card reader
Scanning speed
3 - 125 ips (inches per second)
3 - 50 ips (at 210 bpi)
Service life of magnetic scanning head:
1,000,000 read cycles decoding in
conformance with DIN ISO 7812

Accessories

- Keycap kits 1 x 2, 2 x 2
- Keycaps on request
- Configuration software

(1) Cable and barcode connector

	Keyboard cable	Barcode-connector	RS 232 connector
P	PS/2	-	
Q	PS/2	9pin Sub-D	
R	PS/2	2x9pin SUB-D	
S	PS/2	9pin Sub-D	9pin Sub-D
T	PS/2	-	9pin Sub-D

(2) Magnetic stripe card reader

A =	Track	1+2
B =	Track	2
C =	Track	2+3
D =	Track	1+2+3

Stock codes

G 80-1950 P.(1).(2)XA