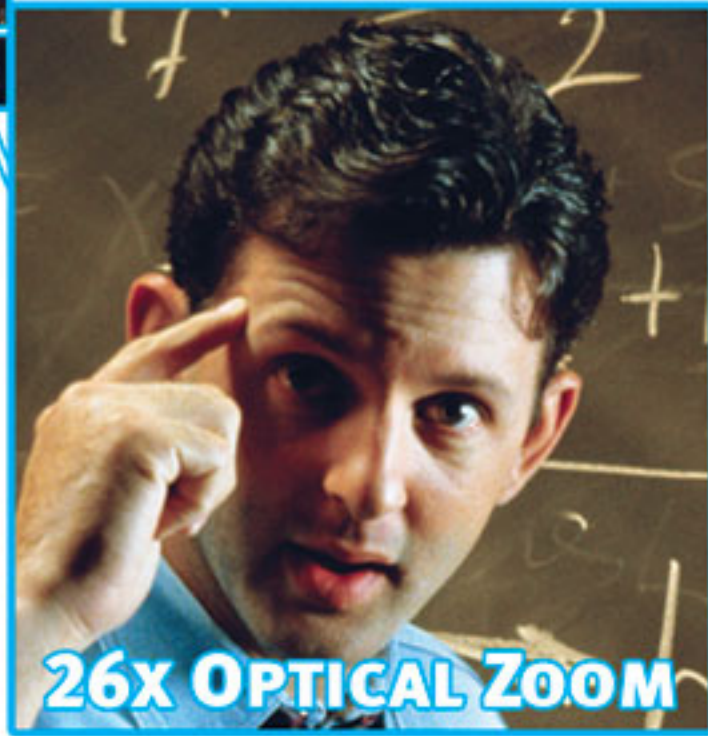


# Canon

## VB-C50iR / VB-C50i

PAN / TILT / ZOOM NETWORK CAMERA

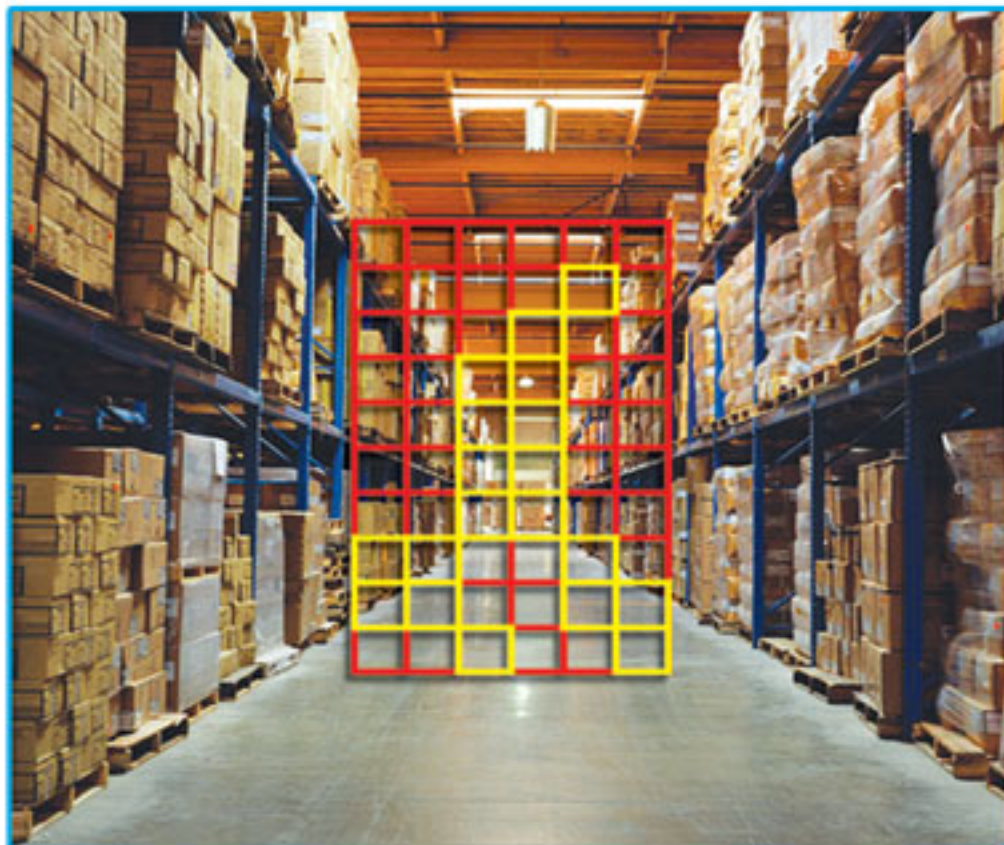


**26X OPTICAL ZOOM**

True 26x Optical Zoom Lens / 12x Digital.



Have a tele-conference with work from your home with two-way audio.



With motion detection, select the sensitivity of motion that fits your needs.



**VB-C50iR**



VB-EX50 sold separately

### **GENUINE CANON OPTICS:**

- Our 26x Optical Zoom allows you to see great detail from a far distance.
- 1/4" 680,000 Pixels CCD (340,000 Effective Pixels).
- Remote control pan / tilt / zoom.  
VB-C50i: Pan:  $\pm 100^\circ$ , Tilt:  $-30^\circ/+90^\circ$   
VB-C50iR: Pan:  $\pm 170^\circ$ , Tilt:  $-90^\circ/+10^\circ$

### **NIGHT MODE:**

- Images can be viewed or recorded in a minimum illumination of 1 lux (1/30 sec. shutter speed).

### **BUILT-IN IR LIGHT:**

- Dark images can be effectively viewed in an approx. range of 9.8 ft.

### **MOTION DETECTION:**

- Motion can be detected up to 4 zones.

### **AUTO TRACKING:**

- Camera will automatically track object's motion once object appears.

### **SHADE CORRECTION:**

- Shade correction increases the brightness of shaded regions without affecting lighter regions.

### **TWO-WAY AUDIO:**

- Capable of sending, receiving, and playing back live and pre-recorded audio files with the optional VB-EX50.

### **PRESETS:**

- 20 Position Presets & Auto Preset Tour.

### **NETWORKING:**

- Built-in Network Server provides viewing up to 50 clients simultaneously.

### **VIDEO:**

- Simultaneous video distribution in various frame sizes (640 x 480, 320 x 240, 160 x 120).





# VB-C50iR / VB-C50i

PAN / TILT / ZOOM NETWORK CAMERA

PRODUCT NAME	VB-C50iR
ITEM CODE	9782A007AA
UPC CODE	013803060522

PRODUCT NAME	VB-C50i
ITEM CODE	9781A008AA
UPC CODE	013803060515

SPECIFICATIONS	
Video Signal	Conforms to NTSC
Image Sensor	1/4-inch CCD (primary color filter)
Number of Pixels	680,000 (effective 340,000)
Synchronization	Internal
Scanning Method	2 : 1 Interlaced
Min. Subject Illumination	Normal mode: 1 lux (at 1/30 sec.) / Night Mode: 0 lux
Imaging Modes	Normal Mode, Night mode
Focusing	Auto/Manual Wide-angle: .03 in. to inf.; Telephoto: 5.25 ft. to inf. (In night mode) Wide-angle: .07 in. to inf.; Telephoto: 7.55 ft. to inf.
Aperture	Auto iris servo system
Lens	f= 3.5 to 91.0 mm / F1.6 to 4.0 / 26x power zoom (shooting at infinity)
Infrared Cut Filter	Power-driven insertion / removal (Normal mode / Night mode)
Night Mode	Infrared Lighting LEDs (4) Effective Lighting Range 9.8 ft.
Lens Filter Diameter	37mm, pitch=0.75mm
White Balance	TTL system: Auto
Operating System	Linux
Protocols	TCP/IP, HTTP, DHCP, FTP, Webview (from Canon)
Video Compression Method	Motion-JPEG compression (video quality variable) JPEG compression (for still pictures)
Video Compression Rate	NTSC: 0.1fps to 30fps
Sound Compression Method	μ-law PCM 8bit (sampling freq. 8000Hz mono)
Output Image Sizes	160 x 120, 320 x 240, 640 x 480
Display Image Sizes	80 x 60, 160 x 120, 320 x 240, 640 x 480
Server	HTTP, FTP, Webview Livescope
Log Management	syslog format
Camera Control	Pan, tilt, zoom, brightness, shutter speed, focus speed, view restriction, control time restriction
Connection Restrictions	Access control (password), video connection time, service period, number of concurrent connections (maximum of 50)
Network	Ethernet x 1 (RJ45, 100Base-TX / 10Base T auto negotiation)
Display LED	Status display network
Multi-Connector	Audio IN/OUT: monaural, mini-jack (1) * IN: Electret condenser monaural microphone input plug-in power (3.3 V) OUT: Line-level output Video IN/OUT: composite, BNC terminal (1 each) * External Device I/O: Input = 2, Output = 3 * RS-232C (for service use only) * Connector for using Multi-Terminal Module VB-EX50 (sold separately)
Dimensions	VB-C50i: 4.11 x 5.13 x 4.32 in. (W x D x H) VB-C50iR: 5.35 x 5.13 x 4.35 in. (W x D x H) (Excludes protruding parts. Includes the mounting plate for the VB-C50iR)
Weight	VB-C50i: Approx. 1.4 lbs VB-C50iR: Approx. 1.5 lbs
Operating Environment	Temperature 0-40°C, humidity 20-85% RH (condensation free)
Power	AC Adapter
Power Consumption	Approx. 13W

AC ADAPTER	
Item Code / Model	6588A001 PA-V16
Input	100-240 VAC 50/60 Hz
Output	13 VDC 1.8 A (max.)
Polarity	Exterior (-) interior (+)
Size	2.28 x 4.65 x 0.98 in. (W x D x H) (Excluding attachment)
Weight	Approx. 0.50 lbs (excluding cable)

CONTENT OF KIT	
Items	VB-C50i or VB-C50iR, AC Adapter and AC Cable PA-V16, Software CD, Users Manual
PACKAGING INFORMATION	
W x H x D	7.32 x 5.39 x 8.54 in.
Weight	2.7 lbs

OPTIONAL SOFTWARE		
Item Code / Description	9513A028	VK-64 Software Ver 1.3
	9513A029	VK-16 Software Ver 1.3
	9513A030	VK-Viewer (1) License
	9513A031	VK-Viewer (5) Licenses
OPTIONAL ACCESSORIES		
Item Code / Description	4674A001AA	(WL-37) Wide Converter Lens for VB-C50i only
	9783A003AA	Multi-Terminal Module VB-EX50

**Canon**  
image*ANYWARE*

1-800-OK-CANON  
www.usa.canon.com

Canon U.S.A., Inc.  
One Canon Plaza  
Lake Success, NY 11042 U.S.A.

Canon Canada, Inc.  
6390 Dixie Road  
Mississauga, Ontario L5T 1P7 Canada

Specifications are subject to change without notice. Weight and dimensions are approximate. Canon and IMAGEANYWARE are registered trademarks of Canon Inc. in the United States and may also be registered marks in other countries. Microsoft and Windows are either registered trademarks or trademarks of the Microsoft Corporation in the United States and/or other countries. Other names and products not mentioned above may be registered trademarks or trademarks of their respective companies. Errors and omissions excepted. Images simulated

Warning: Unauthorized recording of copyrighted materials may infringe on the rights of copyright owners and be contrary to copyright laws ©2007 Canon U.S.A., INC.

[www.canondv.com/nvs](http://www.canondv.com/nvs)