



BOSCH
Invented for life

UNPDN and UNP2DN Day/Night Prepackaged Cameras



- ▶ Includes 1/3 in. or 1/2 in. Dinion^{XF} Series Camera
- ▶ Automatic switching from color to monochrome
- ▶ 540 TVL
- ▶ Multiple lens options available
- ▶ Camera and lens are prewired into a Bosch housing
- ▶ Indoor and outdoor models - outdoor units include a sunshield
- ▶ Plug and Play design includes feed-through mount and 1.5 m (5 ft) of cabling
- ▶ Bilinx bi-directional communication
- ▶ Fiber and UTP option available

The UNPDN and UNP2DN Series Unity Prepackaged Cameras are complete surveillance systems - with a day/night camera and lens installed and prewired into a Bosch 9480 Series Housing. The package also includes an LTC 9215 Series feed-through wall-mount.

All packages include the flagship of the Bosch camera line: the high-sensitivity, high-resolution 1/3-inch or 1/2-inch Dinion^{XF} Series Day/Night CCD Camera. The camera automatically switches from color to monochrome when the ambient light level no longer supports proper color reproduction. This switching is done via a removable mechanical IR cut filter.

This camera's unique, innovative 15-bit digital video processing delivers unsurpassed picture performance under even the most difficult light and scene conditions. The Dinion^{XF} features XF-Dynamic, which reveals all of the details in ultra high-contrast scenes. Each camera is also equipped with Bilinx technology for remote programming.

Bilinx uses standard video cable to transmit alarm and status messages, providing superior performance without additional installation steps.

The surveillance package's plug-and-play design makes installation quick and easy. Units include a factory-installed camera and lens with adjusted back-focus - all of which are prewired through the housing base. Coax

and power cable (1 1/2 m or 5 ft) are fed through the included mount to the connection point.

Packages are also available with transmitters for sending video signals over fiber optic or unshielded twisted pair (UTP) cable.

The installer-friendly design, Dinion^{XF} Series Camera, and wide range of options make the UNPDN Unity Pack Series an ideal solution for everyday surveillance needs.

Certifications and Approvals

Electromagnetic Compatibility (EMC)	Complies with FCC Part 15, ICES-003 and CE regulations
Product Safety	Complies with CE regulations, UL, CSA, EN and IEC Standards

Installation/Configuration Notes

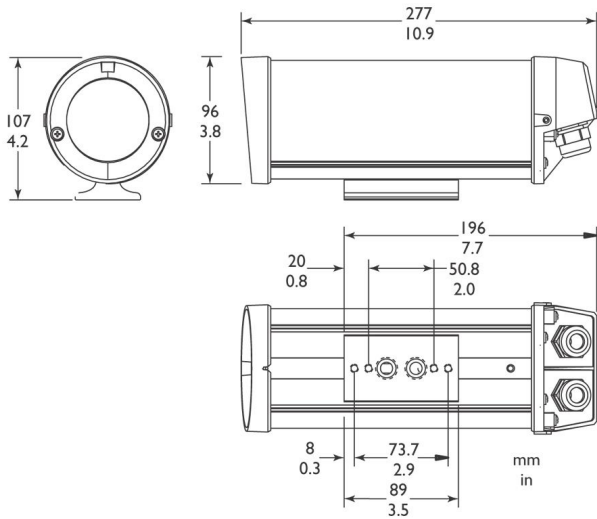


Figure 1 –Indoor Models

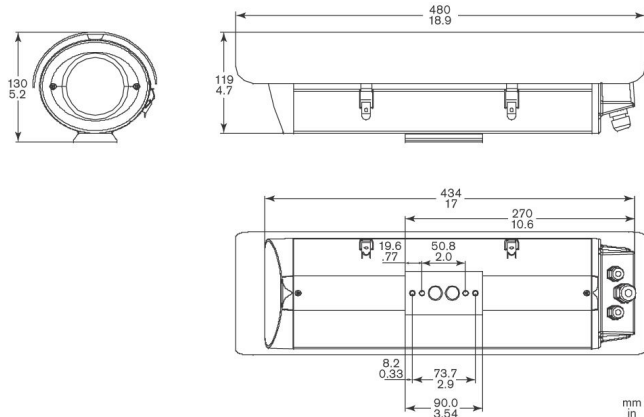
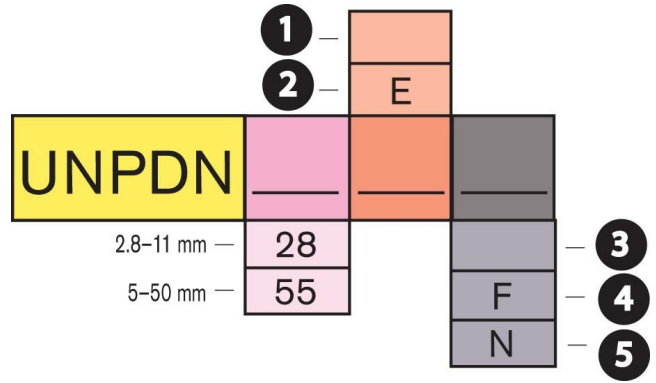


Figure 2 –Outdoor Models

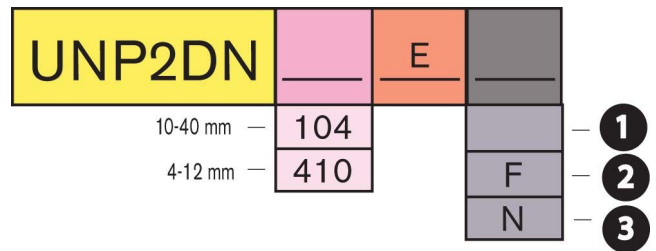
Ordering Information

- Use the following charts to create your order numbers.
- Sample: UNP2DN55E
 - Unity Prepackaged 1/3 in. Dinion^{XF} Camera
 - Day/Night
 - High-resolution, High-sensitivity
 - 5-50 mm Varifocal Lens
 - Outdoor



1/2-inch Day Night Models

Number	Description
1	Indoor
2	Outdoor
3	Standard
4	Fiber Optic Transmitter ^{1,2}
5	UTP Transmitter ^{1,3}



1/3-inch Day Night Models

Number	Description
1	Standard
2	Fiber Optic Transmitter ^{1,2}
3	UTP Transmitter ^{1,3}

NOTES:

- 1 "F" and "N" options are available on outdoor models only.
- 2 "F" option transmitters are compatible with Bosch LTC 4642/60 Fiber Receiver (requires 24 VAC).
- 3 "N" option transmitters are compatible with UTP Passive Receivers up to 750 ft distance; and UTP Active Receivers up to 3,000 ft distance.

Technical Specifications

Camera

Imager (UNPDN Series)	Interline transfer CCD, 1/3 in. format		
Imager (UNP2DN Series)	Interline transfer CCD, 1/2 in. format		
Active Pixels (H x V)	768 x 492		
Sensitivity (3200 K) (UNPDN Series)			
	Full Video ¹	50 IRE ¹	Min. Illumination ¹
Color Mode	2.4 lx	0.59 lx	0.24 lx
Monochrome Mode	---	0.08 lx	0.038 lx
SensUp			
Color Mode	---	---	0.024 lx
Monochrome Mode	---	---	0.0038 lx
Sensitivity (3200 K) (UNP2DN Series)			
	Full Video ¹	50 IRE ¹	Min. Illumination ¹
Color Mode	1.4 lx (0.14 fc)	0.31 lx (0.031 fc)	0.18 lx (0.018 fc)
Monochrome Mode		0.052 lx (0.0052 fc)	0.024 lx (0.0025 fc)
SensUp			
Color Mode	---	---	0.018 lx (0.0018 fc)
Monochrome Mode	---	---	0.0024 lx (0.00024 fc)
<small>1. Scene illumination, f/1.2 lens, 89% scene reflectance, SensUp Off.</small>			
Resolution	540 TVL min.		
Signal/Noise Ratio	>50 dB (AGC off)		
AGC	Auto (maximum level selectable to 28 dB) or fixed level selectable		
Electronic Shutter	Auto (1/60 to 1/500,000 sec.), fixed, flickerless, default		
Sensitivity Up	Off, automatic continuous up to 10x		
Auto Black	On, off selectable		
Dynamic Range	32X dynamic range enhancement		
BLC	Off, area and level selectable		
White Balance	ATW (2500–10,000 K), AWB hold, manual WB selectable		
Video Output	Composite Video 1.0 Vp-p, 75 Ohm		
Synchronization	Internal, Line-lock, HV-lock, and Genlock (Burst lock) selectable		
Noise Reduction	Auto, off selectable		
Contour	Sharpness enhancement level selectable		
Motion Detection	Four (4) area, sensitivity selectable		
Cable Compensation	Up to 1000 m (3000 ft) coax without external amplifiers (automatic setup in combination with coaxial communication)		
Camera ID	16-character editable string, position selectable		
Lens			
UNPDN28, 28E	2.8–11 mm, f/1.4 to 360, Auto Iris, IR corrected		

UNPDN55, 55E	5–50 mm, f/1.6 to 360, Auto Iris, IR corrected
UNP2DN 104E	10-40 mm, f/1.4 to 360, Auto Iris, IR corrected
UNP2DN 104E	4-12 mm, f/1.2 to 360, Auto Iris, IR corrected

Connector

Video	Prewired 1.5 m (5 ft) coax with female BNC connector
Power ²	1 mm ² (18 AWG), 3 conductor, 1.5 m (5 ft) wiring harness with flying leads

2. Power supply input terminals are isolated from video output terminals.

Remote Control	Bilinx coaxial communication
----------------	------------------------------

Power

Indoor Models	12–28 VAC, 60 Hz, 4 W
Outdoor Models	21–28 VAC, 60 Hz, 39 W

Mechanical

Housing

Construction	Aluminum housing casing, neoprene gaskets, UV-resistant polymer endcaps, and all stainless steel hardware
Finish	Gray
Window	3 mm (0.12 in.) Thick UV-stabilized polycarbonate
Mounting	Four (4), 8 mm (5/16 in.) diameter fasteners (not included) are required for mounting
Dimensions	See figures 1 and 2
Weight (approx.)	Indoor model 2.6 kg (5.7 lb) Outdoor model 3.5 kg (7.8 lb)

Feed-Through Mount

Max Load	9 kg (20 lb)
Size	30 cm (12 in.)
Weight	0.4 kg (0.9 lb)

Environmental (Outdoor Models)

Operating Temperature	At an external temperature of –40°C to 50°C (–40°F to 122°F), the housing will maintain the internal temperature between –20°C to 55°C (–4°F to 131°F)
Humidity	0% to 90% relative, non-condensing
Enclosure Protection	IP55, NEMA-3R

Accessories

Sunshield	Included (outdoor models only)
Wall Mount	Included

Ordering Information

Model | Description

UNPDN and UNP2DN Day/Night Prepackaged Cameras

Europe, Middle East, Africa:

Bosch Security Systems B.V.
P.O. Box 80002
5600 JB Eindhoven, The Netherlands
Phone: +31 40 27 83955
Fax: +31 40 27 86668
emea.securitysystems@bosch.com
www.boschsecurity.com

Americas:

Bosch Security Systems
130 Perinton Parkway
Fairport, New York, 14450, USA
Phone: +1 800 289 0096
Fax: +1 585 223 9180
security.sales@us.bosch.com
www.boschsecurity.us

Asia-Pacific:

Bosch Security Systems Pte Ltd
38C Jalan Pemimpin
Singapore 577180
Phone: +65 6319 3450
Fax: +65 6319 3499
apr.securitysystems@bosch.com
www.boschsecurity.com

Represented by