



Smart Full Touch Handheld Computer

SF550

Perfect Combining

of industrial class durability and
convenience of consumer smart phone



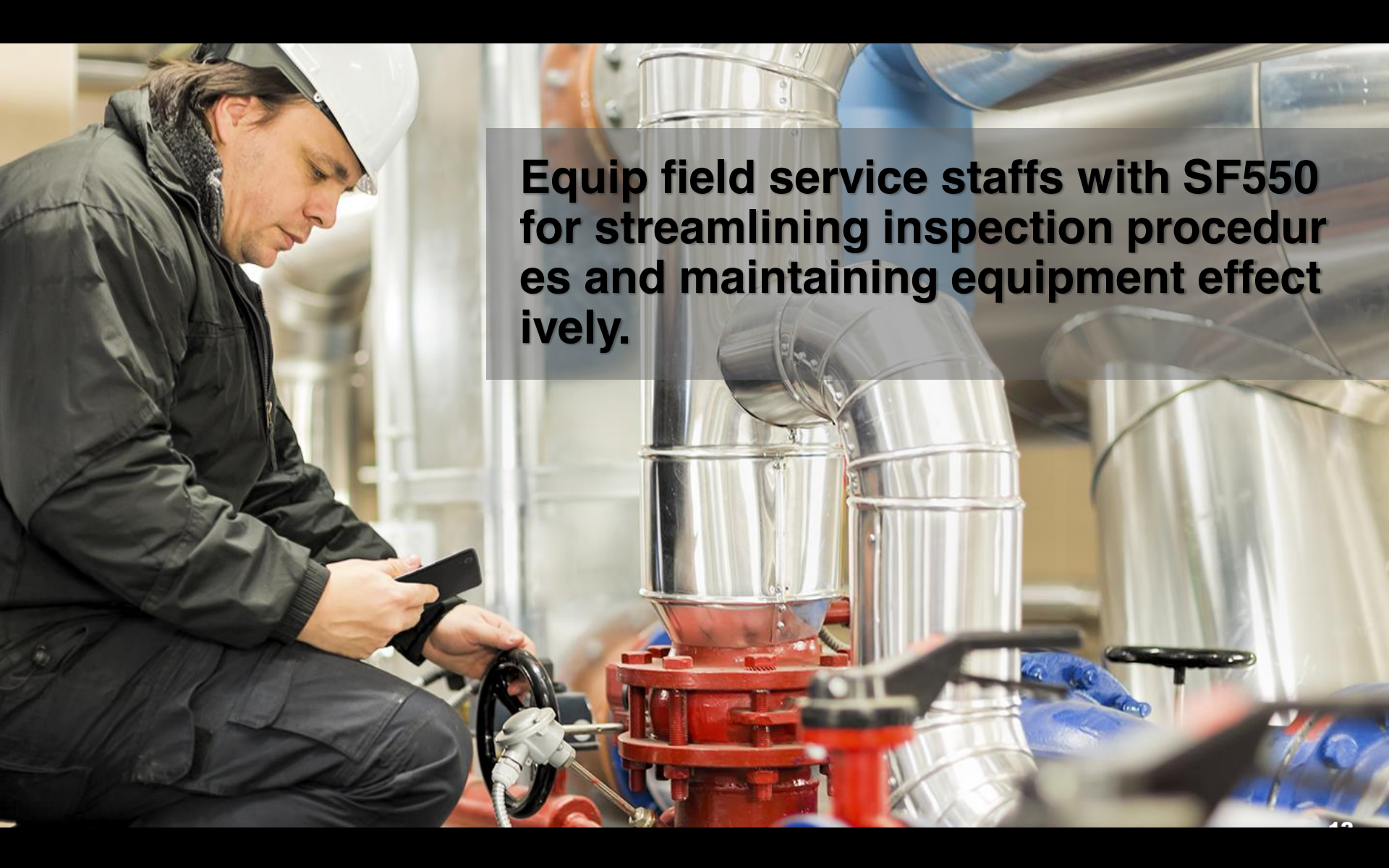
Users always want complete and compact industrial tools for enterprise requirements. SF550 is a logical extension of Blue bird handheld computer line based on the clients' needs.



Bluebird guides you **from installation to bringing applications at maximum working capacity**, compared to other consumer smart phones.

A woman wearing a yellow hard hat and a high-visibility yellow safety vest over a grey shirt is talking on a black smartphone. She is in a warehouse setting with shelves of boxes in the background. Her right hand is holding the phone to her ear, and her left hand is raised with fingers slightly curled, as if gesturing or pointing. The background is slightly blurred, showing other workers and warehouse equipment.

The SF550 enables users to experience the advantage of consumer smartphones and full touch handheld computers in a single package.



Equip field service staffs with SF550 for streamlining inspection procedures and maintaining equipment effectively.



SF550

7 Features

Sleek and Portable experience the advantage of consumer smartphones and full-touch handheld computers





5.5 inch



sleek and portable

Featuring a 6.9mm sleek design along with a large 5.5" FHD display and a Bezel-less front panel, the SF550 enables a variety of industrial applications to reach their full workflow performance potential. It weighs only 138.6g.



excellent communication and network connectivity

Whether indoors or outdoors, the SF550 provides exceptional network connectivity with a wide range of radio frequencies and Bluetooth capabilities. With WWAN communication capabilities supporting LTE, GSM, WCDMA or WLAN 802.11 a/b/g/n as well as Bluetooth 4.0 LE, be assured in knowing that Bluebird has you covered wherever you go.





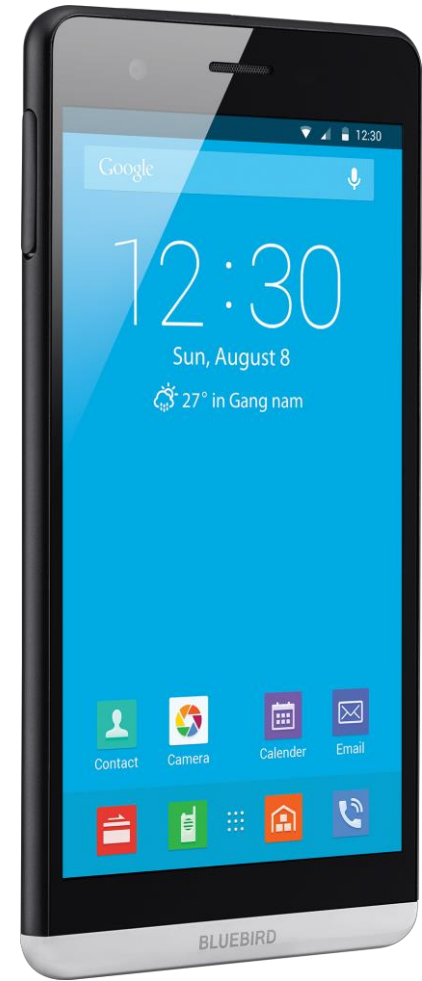
efficient processor, longer battery cycle

The SF550's extreme power saving design takes full advantage of a low power consumption processor without sacrificing performance. It provides the standard (2,600mAh) battery.



OS support

SF550 has perfect choice for OS, which provides Android 5.1. Customized OS support by Bluebird's dedicated team will guide you from installation phase unto maximum working capacity to serve you with the most reliable environment for your business to flourish.





CORNING® GORILLA® GLASS 3

large display,
equipped for industrial purposes

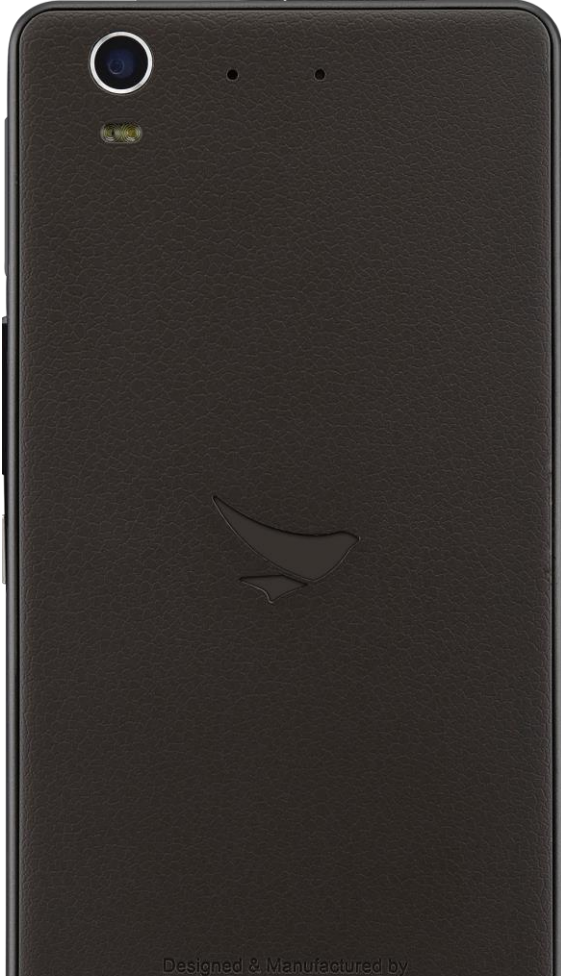
Built to last in tough environments, the SF550's display has diverse features to make your operation a smooth and convenient process. Featuring a 5.5" FHD display, it is encased in Corning® Gorilla Glass® 3 with NDR (native damage resistance) and anti-fingerprint sealing. Furthermore, it has sun glare protection and can be operated equally well with a stylus pen or industrial gloves.



warranty

Bluebird devices are warranted to be free from defects for one year with a 3 year comprehensive warranty (4-5 years optional).





13.0 Megapixel

optimized Camera for industrial demands

SF550 is equipped with an auto focusing 13.0 megapixel camera, providing great performance in speed, accuracy and high image quality that industrial imaging professionals expect.

sleek and portable

excellent communication
and network connectivity

efficient processor,
longer battery cycle

OS support

large display, equipped
for industrial purposes

warranty

optimized Camera
for industrial demands

SF550

7 Features





BLUEBIRD

Spread your wings

Bluebird loves
green

Bluebird designs and manufactures eco friendly
products by global environmental regulation

Bluebird Inc. presented

Copyright © 2015 Bluebird Inc. All Rights Reserved.