

AXIS 233D Network Dome Camera

High-speed dome camera with progressive scan and 35x zoom.



- > 35x zoom
- > Area zoom
- > Progressive scan
- > Electronic image stabilizer
- > Wide dynamic range
- > Pan/tilt performance

AXIS 233D Network Dome Camera provides exceptional features such as progressive scan, 35x optical zoom, and fast and precise pan/tilt mechanics, for superb performance and image quality. AXIS 233D is designed for use in demanding security installations such as airports, casinos, stadiums and ports.

35x optical and 12x digital zoom provides powerful zoom capabilities to enable monitoring of distant objects in sharp detail.

AXIS 233D, with its unique area zoom feature, enables immediate zoom to any desired part of a scene.

Progressive scan provides full resolution images of moving objects, without distortion.

The Electronic Image Stabilizer (EIS) reduces the effect of vibrations caused by traffic or wind, giving sharper images.

With 128x Wide Dynamic Range (WDR), AXIS 233D ensures high-quality video even in complex lighting conditions.

High precision, low speed movement of 0.05°/second makes it possible to follow an object from a long distance. Maximum speed 450°/second allows for extremely fast pan and tilt.



Technical specifications – AXIS 233D Network Dome Camera

Camera	
Models	AXIS 233D Network Dome Camera 60 Hz AXIS 233D Network Dome Camera 50 Hz
Image sensor	1/4" ExView HAD Progressive Scan CCD
Lens	3.4 – 119 mm, F1.4 – 4.2, auto focus, automatic day/night, horizontal angle of view: 1.73° – 55.8°
Minimum illumination	Color: 0.5 lux at 30IRE B/W: 0.008 lux at 30IRE
Shutter time	NTSC: 1/30 000 s – 0.5 s PAL: 1/30 000 s – 1.5 s
Pan/Tilt/Zoom	E-flip 100 preset positions Pan: 360° endless, 0.05 – 450°/s Tilt: 180°, 0.05 – 450°/s 35x optical zoom and 12x digital zoom, total 420x zoom Guard Tour Control queue Auto tracking

Video	
Video compression	MPEG-4 Part 2 (ISO/IEC 14496-2) Motion JPEG
Resolutions	176x120 – 704x576
Frame rate MPEG-4	Up to 30/25fps in all resolutions
Frame rate Motion JPEG	Up to 30/25fps in all resolutions
Video streaming	Simultaneous MPEG-4 and Motion JPEG Controllable frame rate and bandwidth VBR/CBR MPEG-4
Image settings	Wide Dynamic Range (WDR), Electronic Image Stabilization (EIS), manual shutter time, compression, color, brightness, sharpness, rotation, aspect ratio correction Text and image overlay Privacy mask

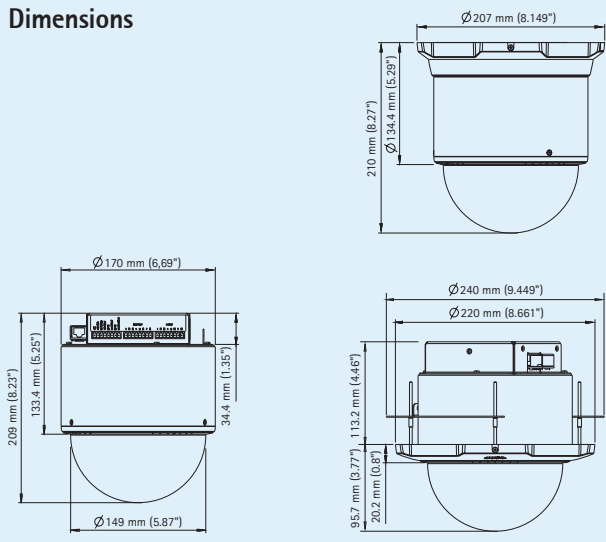
Audio	
Audio streaming	Two-way, full or half duplex
Audio compression	G.711 PCM 64kbit/s G.726 ADPCM 32 or 24 kbit/s
Audio input/output	External microphone input or line input, line level output

Network	
Security	Password protection, IP address filtering, HTTPS encryption, IEEE 802.1X network access control, digest authentication, user access log
Supported protocols	IPv4/v6, HTTP, HTTPS, QoS Layer 3 DiffServ, FTP, SMTP, Bonjour, UPnP, SNMPv1/v2c/v3 (MIB-II), DNS, DynDNS, NTP, RTSP, RTP, TCP, UDP, IGMP, RTCP, ICMP, DHCP, ARP, SOCKS
System integration	
Application Programming Interface	Open API for software integration, including VAPIX® from Axis Communications available at www.axis.com
Intelligent video	Video motion detection, PTZ position, audio detection
Alarm triggers	Intelligent video and external input
Alarm events	File upload via FTP, HTTP and email Notification via email, HTTP and TCP External output activation
Video buffer	36 MB pre-and post alarm

General	
Casing	Metal casing, polycarbonate dome cover
Processors and memory	ARTPEC-2, 64 MB RAM, 8 MB Flash
Power	22 – 40 V DC, max 20 W 18 – 30 V AC, max 25 VA
Connectors	RJ-45 for 10BaseT/100BaseTX Three terminal blocks for 4 alarm inputs and 4 outputs, power in, power out audio mic/line in, audio line out
Operating conditions	-5 – 45 °C (23 – 113 °F) Humidity 20 – 80% RH (non-condensing)
Approvals	EN 55022 Class B, EN 55024, EN 61000-3-2, EN 61000-3-3, EN 61000-6-1, EN 61000-6-2, FCC Part 15 Subpart B Class B, VCCI Class B, C-tick AS/NZS CISPR22, ICES-003 Class B, EN60950 Power supply: EN 60950, PSE, TUV/GS, cUL, CE, CB, SAC
Weight	2.5 g (5.5 lbs)
Included accessories	Installation Guide, CD with User's Manual, recording software, installation and management tools, mounting and connector kits, indoor power supply, clear and smoked dome covers, Windows decoder 1-user license

More information is available at www.axis.com

Dimensions



Optional accessories

Various housings



Power adapter



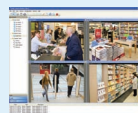
AXIS 295 Video Surveillance Joystick



Camera adapter



IR illuminators



For information on AXIS Camera Station and video management software from Axis' Application Development Partners, see www.axis.com/products/video/software/