

AXIS 210/211 Network Cameras

Superior video quality for professional indoor and outdoor applications

AXIS 210 and AXIS 211 Network Cameras from the market leader in network video, are ideal for indoor and outdoor surveillance and remote monitoring.

The network cameras provide the best image quality in their class, using a progressive scan CCD sensor and powerful real-time image processing hardware to guarantee full frame rate, even at VGA resolution. Connecting directly to IP networks, the built-in Web server, open application interface, and sophisticated networking functions based on open industry standards greatly simplify systems integration.

AXIS 211, with built-in Power over Ethernet – which enables power to be delivered to the camera via the network – reduces cabling requirements and installation costs, and consolidates power for higher reliability.

AXIS 210 and AXIS 211 provide the perfect solution for securing offices, shops, schools and other facilities over the local area network or across the Internet.

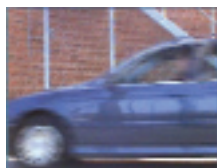


- Superior image quality using progressive scan CCD and advanced video processing
- Up to 30 frames per second in VGA 640 x 480 resolution
- Simultaneous Motion JPEG and MPEG-4 streams optimize for quality and bandwidth
- Built-in motion detection with pre- and post-alarm image buffering
- Power over Ethernet support (IEEE 802.3af) simplifies installation (AXIS 211)



Specifications

Models	AXIS 210: indoor use only AXIS 211: Power over Ethernet, varifocal DC-Iris, indoor/outdoor	Power	7-20 V DC max 7 W AXIS 211: PoE IEEE802.3af Class 2
Image Sensor	1/4" Sony Wfine progressive scan RGB CCD	Operating conditions	5 - 45 °C (41 - 113 °F) Humidity 20 - 80% RH (non-condensing)
Lens	AXIS 210: 4.0 mm, F1.2, fixed iris, CS mount AXIS 211: 3.0 - 8.0 mm, F1.0, DC-iris, CS mount	Installation, management and maintenance	AXIS Camera Management tool on CD and web-based configuration, configuration of backup and restore Firmware upgrades over HTTP or FTP, firmware available at www.axis.com
Angle of view	AXIS 210: 48° horizontal AXIS 211: 27°-67° horizontal	Video access from Web browser	Camera live view, Video recording to file (ASF), Sequence tour for up to 20 external Axis video sources, Customizable HTML pages
Minimum illumination	AXIS 210: 1.0 lux, F1.2 AXIS 211: 0,75 lux, F1.0	Minimum Web browsing requirements	Pentium III CPU 500 MHz or higher, or equivalent AMD, 128 MB RAM, AGP graphics card 32 MB RAM, Direct Draw Windows XP, 2000, 2003 Server, DirectX 9.0 or later Internet Explorer 6.x or later For other operating systems and browsers see www.axis.com/techsup
Video compression	Motion JPEG MPEG-4 Part 2 (ISO/IEC 14496-2), Profiles: ASP and SP	System integration support	Open API for application integration including AXIS VAPIX API*, AXIS Media Control SDK*, event trigger data in video stream Quality of Service (QoS) Layer 3, DiffServ Model Embedded Linux operating system * Available at www.axis.com
Resolutions	16 resolutions from 640 x 480 to 160 x 120 via API, 5 selections via configuration web page	Supported protocols	IPv4/v6, HTTP, TCP, QoS, RTSP, RTP, UDP, IGMP, RTCP, SMTP, FTP, ICMP DHCP, UPnP, Bonjour, ARP, DNS, DynDNS, SOCKS. More information on protocol usage available at www.axis.com
Frame rate	Motion JPEG: Up to 30 fps in all resolutions MPEG-4: Up to 25 fps at 640x480 Up to 30 fps at 480x360 or lower	Video management software (not incl.)	AXIS Camera Station - Surveillance application for viewing, recording and archiving up to 25 cameras See www.axis.com/partner/adp_partners.htm for more software applications via partners
Video streaming	Simultaneous Motion JPEG and MPEG-4 Controllable frame rate and bandwidth Constant and variable bit rate (MPEG-4)	Included Accessories	Power supply 9 V DC, stand, connector kit, Installation Guide, CD with installation tool, software and User's Manual, MPEG-4 licenses (1 encoder, 1 decoder), MPEG-4 decoder (Windows)
Image settings	Compression levels: 11 (Motion JPEG)/23 (MPEG-4) Rotation: 90°, 180°, 270° Configurable color level, brightness, contrast, exposure, white balance, fine tuning of behavior at low light Overlay capabilities: time, date, privacy mask, text or image	Accessories (not incl.)	Housings for adverse indoor/outdoor environments Power over Ethernet midspans AXIS 292 Network Video Decoder MPEG-4 Decoder multi-user license pack
Shutter time	2 sec to 1/12500 sec	Approvals	EN 55022 Class B, EN 61000-3-2, EN 61000-3-3, EN 55024, FCC Part 15 Subpart B Class B, ICES-003 Class B, VCCI Class B, C-tick AS/NZS 3548, EN 60950 Power supply: EN 60950, UL, cUL
Security	Multiple user access levels with password protection IP address filtering	Dimensions (HxWxD) and weight	AXIS 210: 38 x 88 x 157 mm (1.5" x 3.4" x 6.2") AXIS 211: 38 x 95 x 178 mm (1.5" x 3.7" x 7.0") 250 g (0.55 lb) excl. power supply
Users	20 simultaneous users Unlimited users using multicast (MPEG-4)		
Language support (Web interface)	English. Downloadable language files for French, German, Italian, Japanese and Spanish are available at www.axis.com/techsup . Other language files may also be available		
Alarm and event management	Events triggered by built-in motion detection, external input or according to a schedule Image upload over FTP, email and HTTP Notification over TCP, email, HTTP and external output Pre- and post alarm buffer: up to 1.2 MB (up to 40 sec of 320x240 video at 4 frames per sec)		
Connectors	RJ-45 for Ethernet 10BaseT/100BaseTX Terminal block for 1 alarm input, 1 output and alternative power connection		
Processors, memory and clock	CPU: ETRAX 100LX 32bit Video processing and compression: ARTPEC-2 RAM: 16 MB, Flash: 4 MB Battery backed up real-time clock		



Interlaced, 20 ms difference between odd and even lines



Progressive Scan, all lines are captured at the same time

Progressive scan is used instead of the interlaced method found in analog CCTV (PAL/NTSC) cameras. With progressive scan all pixels (lines) are captured at the same time, enabling moving images to be presented without distortion.